

# SMC3 Recombinant Monoclonal Antibody [BLR099G]

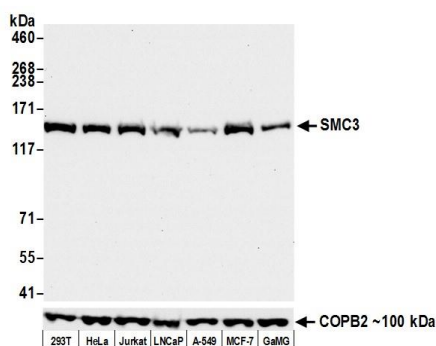
Rabbit Recombinant Monoclonal

Purified Protein ID NP\_005436.1  
Catalog No. A700-099-T GeneID 9126  
Lot No. A700-099-T-1

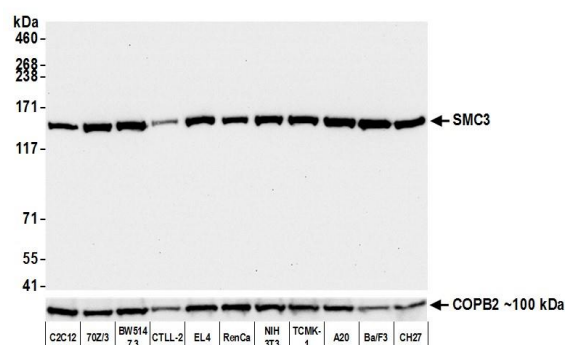


<b>APPLICATIONS</b>	WB, IP
<b>SPECIES REACTIVITY</b>	Human, Mouse
<b>AMOUNT</b>	20 µl (2 blots)
<b>CONCENTRATION</b>	1000 µg/ml
<b>STORAGE/SHELF LIFE</b>	2 – 8° C / 1 year from date of receipt
<b>PHYSICAL STATE</b>	Liquid
<b>BUFFER</b>	Borate Buffered Saline (BBS) pH 8.2 with 0.09% Sodium Azide, BSA Free
<b>ISOTYPE</b>	IgG
<b>CLONE #</b>	BLR099G
<b>ORIGIN</b>	USA
<b>PRODUCTION PROCEDURES</b>	Recombinant antibody was purified from cell culture supernatant.  Immunogen was a peptide representing a region between residue 1175 and the C-terminus (residue 1217) of human Structural maintenance of chromosomes protein 3 (SMC3) using the numbering given in entry NP_005436.1 (Gene ID 9126).
<b>APPLICATIONS</b>	Centrifuge tube to remove product from lid. Optimal working dilutions should be determined experimentally by the investigator. Prepare working dilution immediately before use.  Western Blot 1:1000 Immunoprecipitation 6 µl/1 mg lysate
<b>ADDITIONAL INFO</b>	<a href="https://www.bethyl.com/product/A700-099-T">https://www.bethyl.com/product/A700-099-T</a> Use the link above to view SDS, a current list of citations, and other product specific information.

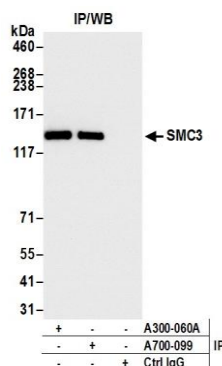
This document certifies that this product has met all of the quality control standards defined by Bethyl Laboratories, Inc.  
Eric McIntush, PhD | Chief Scientific Officer Date: January 24, 2020



**Detection of human SMC3 by western blot.** *Samples:* Whole cell lysate (50 µg) from HEK293T, HeLa, Jurkat, LNCaP, A-549, MCF-7, and GaMG cells prepared using NETN lysis buffer. *Antibody:* Rabbit anti-SMC3 recombinant monoclonal antibody [BLR099G] (A700-099-T lot 1) used at 1:1000. *Secondary:* HRP-conjugated goat anti-rabbit IgG (A120-101P). Chemiluminescence with an exposure time of 10 seconds. Lower Panel: Rabbit anti-COPB2 antibody (A304-523A).



**Detection of mouse SMC3 by western blot.** *Samples:* Whole cell lysate (50 µg) from C2C12, 70Z/3, BW5147.3, CTLL-2, EL4, RenCa, NIH 3T3, TCMK-1, A20, Ba/F3, and CH27 cells prepared using NETN lysis buffer. *Antibody:* Rabbit anti-SMC3 recombinant monoclonal antibody [BLR099G] (A700-099-T lot 1) used at 1:1000. *Secondary:* HRP-conjugated goat anti-rabbit IgG (A120-101P). Chemiluminescence with an exposure time of 10 seconds. Lower Panel: Rabbit anti-COPB2 antibody (A304-523A).



**Detection of human SMC3 by western blot of immunoprecipitates.** *Samples:* Whole cell lysate (1.0 mg per IP reaction; 20% of IP loaded) from 293T cells prepared using NETN lysis buffer. *Antibodies:* Rabbit anti-SMC3 recombinant monoclonal antibody [BLR099G] (A700-099-T lot 1) used for IP at 6 µl per reaction. SMC3 was also immunoprecipitated by rabbit anti-SMC3 antibody A300-060A. For blotting immunoprecipitated SMC3, A700-099-T was used at 1:1000. Chemiluminescence with an exposure time of 10 seconds.