

Vimentin Recombinant Monoclonal Antibody [BLR100G]

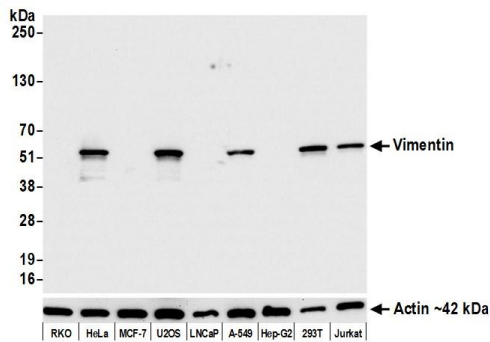
Rabbit Recombinant Monoclonal

Purified Protein ID NP_003371.2
Catalog No. A700-100-T GeneID 7431
Lot No. A700-100-T-1

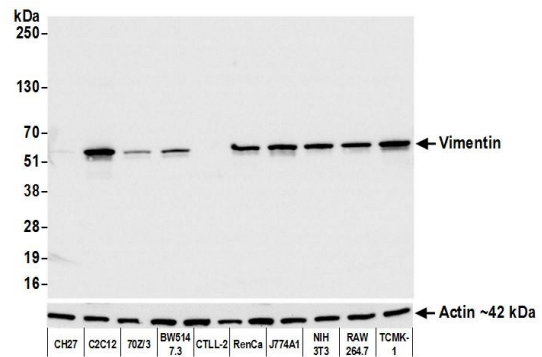


APPLICATIONS	WB, IHC, ICC, IHC-IF
SPECIES REACTIVITY	Human, Mouse
AMOUNT	10 µl (5+ tests)
CONCENTRATION	100 µg/ml
STORAGE/SHELF LIFE	2 – 8° C / 1 year from date of receipt
PHYSICAL STATE	Liquid
BUFFER	Borate Buffered Saline (BBS) pH 8.2 with 0.1% BSA and 0.09% Sodium Azide
ISOTYPE	IgG
CLONE #	BLR100G
ORIGIN	USA
PRODUCTION PROCEDURES	Recombinant antibody was purified from cell culture supernatant. Immunogen was a peptide representing a region between residue 325 and 375 of human Vimentin using the numbering given in entry NP_003371.2 (Gene ID 7431).
APPLICATIONS	Centrifuge tube to remove product from lid. Optimal working dilutions should be determined experimentally by the investigator. Prepare working dilution immediately before use. Western Blot 1:1,000 Immunohistochemistry 1:100 to 1:500. Epitope retrieval with citrate buffer pH6.0 is recommended for FFPE tissue sections. Immunocytochemistry 1:100 to 1:500. Epitope retrieval with citrate buffer pH6.0 is recommended for FFPE cell sections. Immunofluorescence (IHC) 1:100 to 1:500. Epitope retrieval with citrate buffer pH6.0 is recommended for FFPE tissue sections.
IHC HUMAN CONTROLS	Breast Carcinoma, Colon, Lung Carcinoma, Ovarian Carcinoma, Tonsil, HeLa Cells, OVCAR-8 Cells
IHC MOUSE CONTROLS	Renal Cell Carcinoma
ADDITIONAL INFO	https://www.bethyl.com/product/A700-100-T Use the link above to view SDS, a current list of citations, and other product specific information.

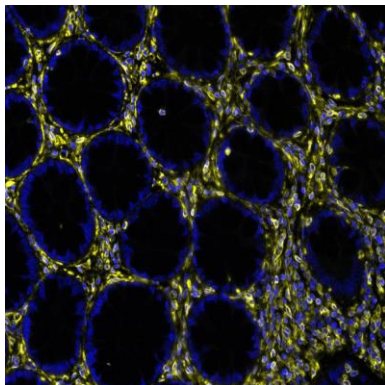
This document certifies that this product has met all of the quality control standards defined by Bethyl Laboratories, Inc.
Eric McIntush, PhD | Chief Scientific Officer Date: August 17, 2020



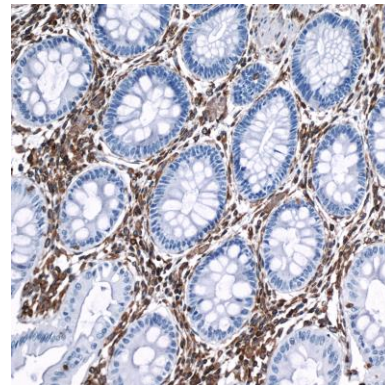
Detection of human Vimentin by western blot. *Samples:* Whole cell lysate (5 µg) from RKO, HeLa, MCF-7, U2OS, LNCaP, A-549, Hep-G2, HEK293T, and Jurkat cells prepared using NETN lysis buffer. *Antibody:* Rabbit anti-Vimentin recombinant monoclonal antibody [BLR100G] (A700-100-T lot 1) used at 1:1000. *Secondary:* HRP-conjugated goat anti-rabbit IgG (A120-101P). Chemiluminescence with an exposure time of 3 seconds. Lower Panel: Rabbit anti-Actin recombinant monoclonal antibody [BLR057F] (A700-057).



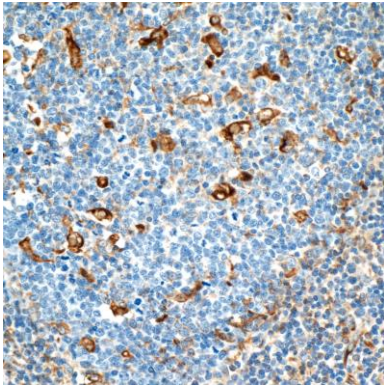
Detection of mouse Vimentin by western blot. *Samples:* Whole cell lysate (5 µg) from CH27, C2C12, 70Z/3, BW5147.3, CTLL-2, RenCa, J774A1, NIH 3T3, RAW 264.7, and TCMK-1 cells prepared using NETN lysis buffer. *Antibody:* Rabbit anti-Vimentin recombinant monoclonal antibody [BLR100G] (A700-100-T lot 1) used at 1:1000. *Secondary:* HRP-conjugated goat anti-rabbit IgG (A120-101P). Chemiluminescence with an exposure time of 1 second. Lower Panel: Rabbit anti-Actin recombinant monoclonal antibody [BLR057F] (A700-057).



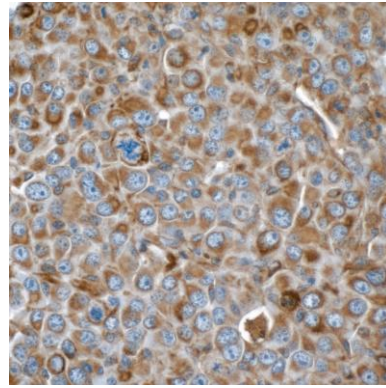
Detection of human Vimentin in FFPE colon carcinoma by immunohistochemistry-IF. *Antibody:* Rabbit anti-Vimentin recombinant monoclonal antibody [BLR100G] (A700-100-T Lot 1). *Secondary:* HRP-conjugated goat anti-rabbit IgG (A120-501P). *Substrate:* Opal™. Counterstain: DAPI.



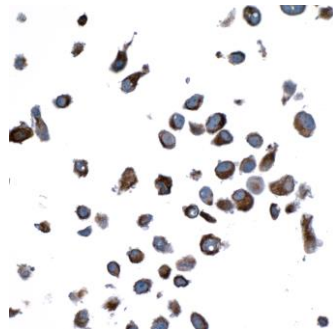
Detection of human Vimentin in FFPE colon by IHC. *Antibody:* Rabbit anti-Vimentin recombinant monoclonal antibody [BLR100G] (A700-100-T lot 1). *Secondary:* HRP-conjugated goat anti-rabbit IgG (A120-501P). *Substrate:* DAB.



Detection of human Vimentin in FFPE tonsil by IHC. *Antibody:* Rabbit anti-Vimentin recombinant monoclonal antibody [BLR100G] (A700-100-T lot 1). *Secondary:* HRP-conjugated goat anti-rabbit IgG (A120-501P). *Substrate:* DAB.



Detection of mouse Vimentin in FFPE renal cell carcinoma by IHC. *Antibody:* Rabbit anti-Vimentin recombinant monoclonal antibody [BLR100G] (A700-100-T lot 1). *Secondary:* HRP-conjugated goat anti-rabbit IgG (A120-501P). *Substrate:* DAB.



Detection of human Vimentin in FFPE HeLa by ICC. *Antibody:* Rabbit anti-Vimentin recombinant monoclonal antibody [BLR100G] (A700-100-T lot 1). *Secondary:* HRP-conjugated goat anti-rabbit IgG (A120-501P). *Substrate:* DAB.