

# Phospho CDK1 (Y15) Recombinant Monoclonal Antibody [BLR101H]

Rabbit Recombinant Monoclonal

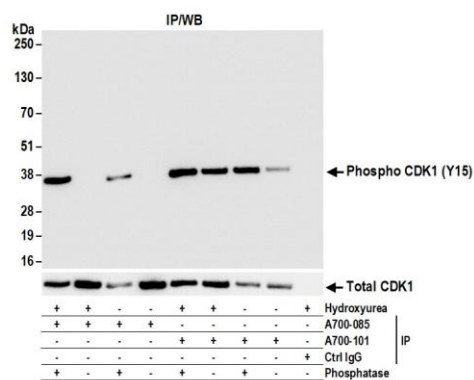
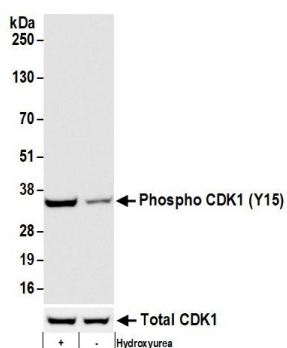
Purified Protein ID NP\_001777.1  
Catalog No. A700-101 GeneID 983  
Lot No. A700-101-1



<b>APPLICATIONS</b>	WB, IP
<b>SPECIES REACTIVITY</b>	Human
<b>AMOUNT</b>	100 µl (10 blots)
<b>CONCENTRATION</b>	40 µg/ml
<b>STORAGE/SHELF LIFE</b>	2 – 8° C / 1 year from date of receipt
<b>PHYSICAL STATE</b>	Liquid
<b>BUFFER</b>	Borate Buffered Saline (BBS) pH 8.2 with 0.1% BSA and 0.09% Sodium Azide
<b>ISOTYPE</b>	IgG
<b>CLONE #</b>	BLR101H
<b>ORIGIN</b>	USA
<b>PRODUCTION PROCEDURES</b>	Recombinant antibody was purified from cell culture supernatant.  Immunogen was a peptide surrounding phosphorylated tyrosine 15 of human cyclin dependent kinase 1 using the numbering given in entry NP_001777.1 (Gene ID 983).
<b>APPLICATIONS</b>	Centrifuge tube to remove product from lid. Optimal working dilutions should be determined experimentally by the investigator. Prepare working dilution immediately before use.  Western Blot 1:1,000 Immunoprecipitation 20 µl/1 mg lysate
<b>ADDITIONAL INFO</b>	<a href="https://www.bethyl.com/product/A700-101">https://www.bethyl.com/product/A700-101</a> Use the link above to view SDS, a current list of citations, and other product specific information.

This document certifies that this product has met all of the quality control standards defined by Bethyl Laboratories, Inc.  
Eric McIntush, PhD | Chief Scientific Officer Date: January 24, 2020

# Phospho CDK1 (Y15) Recombinant Monoclonal Antibody [BLR101HA700-101]



## Detection of human Phospho CDK1 (Y15) by western blot.

**Samples:** Whole cell lysate (50 µg) from HeLa cells treated (+) with Hydroxyurea or mock treated (-) prepared using NETN lysis buffer. **Antibody:** Rabbit anti-Phospho CDK1 (Y15) recombinant monoclonal antibody [BLR101H] (A700-101 lot 1) used at 1:1000. **Secondary:** HRP-conjugated goat anti-rabbit IgG (A120-101P). Chemiluminescence with an exposure time of 10 seconds. Lower panel shows WB for total CDK1 using rabbit anti-CDK1 recombinant monoclonal [BLR085G] (A700-085).

## Detection of human Phospho CDK1 (Y15) by western blot of immunoprecipitates.

**Samples:** Whole cell lysate (1.0 mg per IP reaction; 20% of IP loaded) from HeLa cells treated with Hydroxyurea (+) or mock treated (-). **Antibodies:** Rabbit anti-Phospho CDK1 (Y15) recombinant monoclonal antibody [BLR101H] (A700-101 lot 1) used for IP at 20 µl/mg lysate. Total CDK1 was immunoprecipitated by Rabbit anti-CDK1 recombinant monoclonal antibody (BLR085G) (A700-085). Immunoprecipitates were treated with phosphatase (+) or mock treated (-). For blotting immunoprecipitated Phospho CDK1 (Y15), A700-101 was used at 1:1000. Chemiluminescence with an exposure time of 10 seconds. Lower panel shows WB for total CDK1 using rabbit anti-CDK1 recombinant monoclonal [BLR085G] (A700-085).