

# ZEB1 Recombinant Monoclonal Antibody [BLR102H]

Rabbit Recombinant Monoclonal

Purified Protein ID NP\_110378.3  
Catalog No. A700-102-T GeneID 6935  
Lot No. A700-102-T-1



**APPLICATIONS** WB, IP  
**SPECIES REACTIVITY** Human, Mouse  
**AMOUNT** 20 µl (2 blots)  
**CONCENTRATION** 100 µg/ml  
**STORAGE/SHELF LIFE** 2 – 8° C / 1 year from date of receipt  
**PHYSICAL STATE** Liquid  
**BUFFER** Borate Buffered Saline (BBS) pH 8.2 with 0.1% BSA and 0.09% Sodium Azide  
**ISOTYPE** IgG  
**CLONE #** BLR102H  
**ORIGIN** USA  
**PRODUCTION PROCEDURES** Recombinant antibody was purified from cell culture supernatant.

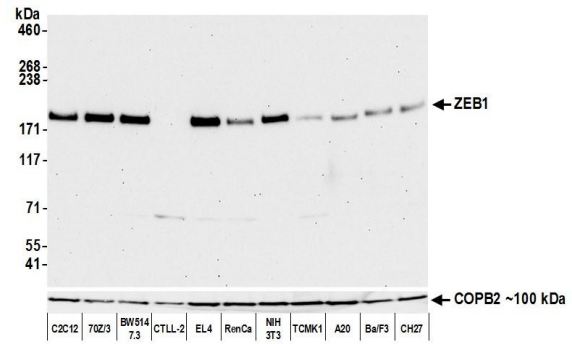
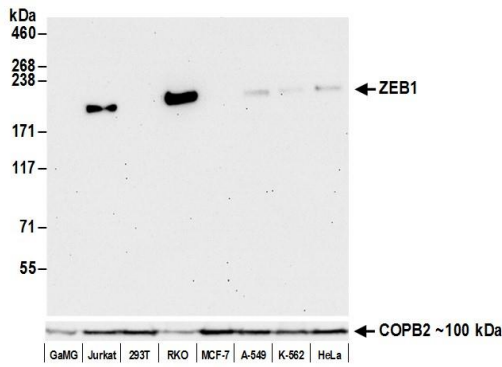
Immunogen was a peptide representing a region between residue 1074 and the C-terminus (residue 1124) of human zinc finger E-box-binding homeobox 1 using the numbering given in entry NP\_110378.3 (Gene ID 6935).

**APPLICATIONS** Centrifuge tube to remove product from lid. Optimal working dilutions should be determined experimentally by the investigator. Prepare working dilution immediately before use.

Western Blot 1:1,000  
Immunoprecipitation 20 µl/1 mg lysate

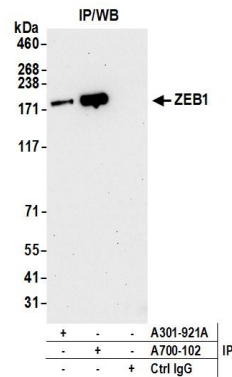
**ADDITIONAL INFO** <https://www.bethyl.com/product/A700-102-T>  
Use the link above to view SDS, a current list of citations, and other product specific information.

This document certifies that this product has met all of the quality control standards defined by Bethyl Laboratories, Inc.  
Eric McIntush, PhD | Chief Scientific Officer Date: January 23, 2020



**Detection of human ZEB1 by western blot.** *Samples:* Whole cell lysate (50 µg) from GaMG, Jurkat, HEK293T, RKO, MCF-7, A-549, K-562, and HeLa cells prepared using NETN lysis buffer. *Antibody:* Rabbit anti-ZEB1 recombinant monoclonal antibody [BLR102H] (A700-102-T lot 1) used at 1:1000. *Secondary:* HRP-conjugated goat anti-rabbit IgG (A120-101P). Chemiluminescence with an exposure time of 30 seconds. Lower Panel: Rabbit anti-COPB2 antibody (A304-523A).

**Detection of mouse ZEB1 by western blot.** *Samples:* Whole cell lysate (50 µg) from C2C12, 70Z/3, BW5147.3, CTLL-2, EL4, RenCa, NIH 3T3, TCMK-1, A20, Ba/F3, and CH27 cells prepared using NETN lysis buffer. *Antibody:* Rabbit anti-ZEB1 recombinant monoclonal antibody [BLR102H] (A700-102-T lot 1) used at 1:1000. *Secondary:* HRP-conjugated goat anti-rabbit IgG (A120-101P). Chemiluminescence with an exposure time of 30 seconds. Lower Panel: Rabbit anti-COPB2 antibody (A304-523A).



**Detection of human ZEB1 by western blot of immunoprecipitates.** *Samples:* Whole cell lysate (1.0 mg per IP reaction; 20% of IP loaded) from 293T cells prepared using NETN lysis buffer. *Antibodies:* Rabbit anti-ZEB1 recombinant monoclonal antibody [BLR102H] (A700-102-T lot 1) used for IP at 20 µl/mg lysate. ZEB1 was also immunoprecipitated by rabbit anti-ZEB1 antibody A301-921A. For blotting immunoprecipitated ZEB1, A700-102-T was used at 1:1000. Chemiluminescence with an exposure time of 30 seconds.