

GAPDH Recombinant Monoclonal Antibody [BLR103H]

Rabbit Recombinant Monoclonal

Purified Protein ID NP_002037.2
Catalog No. A700-103-T GeneID 2597
Lot No. A700-103-T-1



APPLICATIONS WB, IHC, ICC
SPECIES REACTIVITY Human, Mouse
AMOUNT 10 µl (5+ tests)
CONCENTRATION 30 µg/ml
STORAGE/SHELF LIFE 2 – 8° C / 1 year from date of receipt
PHYSICAL STATE Liquid
BUFFER Borate Buffered Saline (BBS) pH 8.2 with 0.1% BSA and 0.09% Sodium Azide
ISOTYPE IgG
CLONE # BLR103H
ORIGIN USA
PRODUCTION PROCEDURES Recombinant antibody was purified from cell culture supernatant.

Immunogen was a peptide representing a region between residue 225 and 275 of human glyceraldehyde-3-phosphate dehydrogenase using the numbering given in entry NP_002037.2 (Gene ID 2597).

APPLICATIONS Centrifuge tube to remove product from lid. Optimal working dilutions should be determined experimentally by the investigator. Prepare working dilution immediately before use.

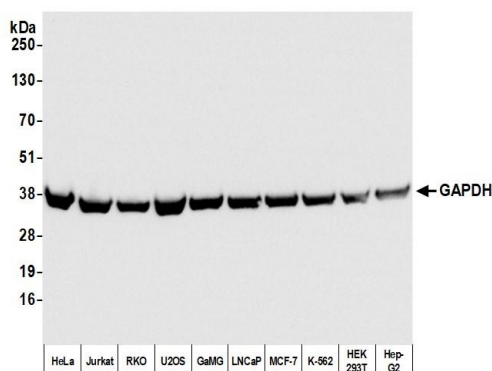
Western Blot 1:1,000
Immunohistochemistry 1:100 to 1:500. Epitope retrieval with citrate buffer pH6.0 is recommended for FFPE tissue sections.
Immunocytochemistry 1:100 to 1:500. Epitope retrieval with citrate buffer pH6.0 is recommended for FFPE cell sections.

IHC HUMAN CONTROLS Appendix, Breast Carcinoma, Lung Carcinoma, Ovarian Carcinoma, HEK293T Cells, HeLa Cells, Jurkat Cells

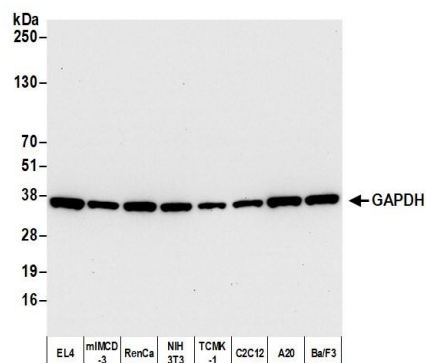
ADDITIONAL INFO <https://www.bethyl.com/product/A700-103-T>

Use the link above to view SDS, a current list of citations, and other product specific information.

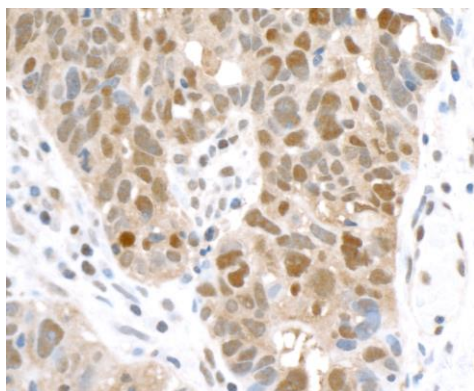
This document certifies that this product has met all of the quality control standards defined by Bethyl Laboratories, Inc.
Eric McIntush, PhD | Chief Scientific Officer Date: April 9, 2020



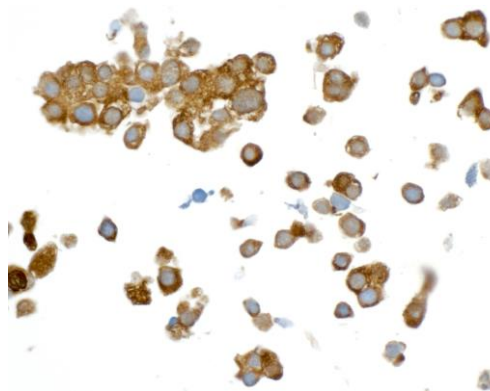
Detection of human GAPDH by western blot. *Samples:* Whole cell lysate (50 μ g) from HeLa, Jurkat, RKO, U2OS, GaMG, LNCaP, MCF-7, K-562, HEK293T, and Hep-G2 cells prepared using NETN lysis buffer. *Antibody:* Rabbit anti-GAPDH recombinant monoclonal antibody [BLR103H] (A700-103-T lot 1) used at 1:1000. *Secondary:* HRP-conjugated goat anti-rabbit IgG (A120-101P). Chemiluminescence with an exposure time of 1 second.



Detection of mouse GAPDH by western blot. *Samples:* Whole cell lysate (15 μ g) from EL4, mIMCD-3, RenCa, NIH 3T3, TCMK-1, C2C12, A20, and Ba/F3 cells prepared using NETN lysis buffer. *Antibody:* Rabbit anti-GAPDH recombinant monoclonal antibody [BLR103H] (A700-103-T lot 1) used at 1:1000. *Secondary:* HRP-conjugated goat anti-rabbit IgG (A120-101P). Chemiluminescence with an exposure time of 10 seconds.



Detection of human GAPDH in FFPE ovarian carcinoma by IHC. *Antibody:* Rabbit anti-GAPDH recombinant monoclonal antibody [BLR103H] (A700-103-T lot 1). *Secondary:* HRP-conjugated goat anti-rabbit IgG (A120-501P). *Substrate:* DAB.



Detection of human GAPDH in FFPE HEK293T cells by ICC. *Antibody:* Rabbit anti-GAPDH recombinant monoclonal antibody [BLR103H] (A700-103-T lot 1). *Secondary:* HRP-conjugated goat anti-rabbit IgG (A120-501P). *Substrate:* DAB.