

Cytokeratin 20 Recombinant Monoclonal Antibody [BLR105H]

Rabbit Recombinant Monoclonal

Purified Protein ID NP_061883.1
Catalog No. A700-105 GeneID 54474
Lot No. A700-105-1



APPLICATIONS WB, IP, IHC, ICC
SPECIES REACTIVITY Human
AMOUNT 100 µl (50+ tests)
CONCENTRATION 250 µg/ml
STORAGE/SHELF LIFE 2 – 8° C / 1 year from date of receipt
PHYSICAL STATE Liquid
BUFFER Borate Buffered Saline (BBS) pH 8.2 with 0.1% BSA and 0.09% Sodium Azide
ISOTYPE IgG
CLONE # BLR105H
ORIGIN USA
PRODUCTION PROCEDURES Recombinant antibody was purified from cell culture supernatant.

Immunogen was a peptide representing a region between residue 250 and 300 of human keratin, type I cytoskeletal 20 using the numbering given in entry NP_061883.1 (Gene ID 54474).

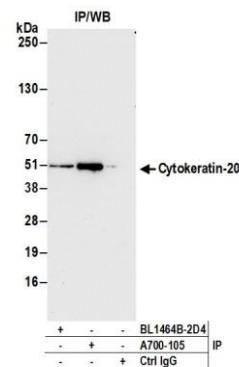
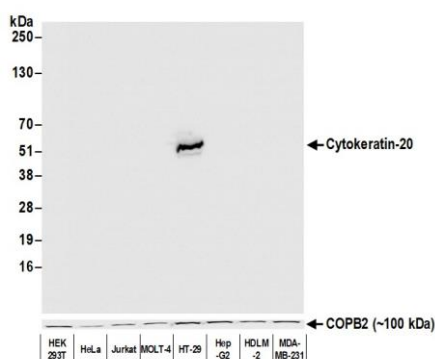
APPLICATIONS Centrifuge tube to remove product from lid. Optimal working dilutions should be determined experimentally by the investigator. Prepare working dilution immediately before use.

Western Blot 1:1,000
Immunoprecipitation 20 µl/1 mg lysate
Immunohistochemistry 1:100 to 1:500. Epitope retrieval with citrate buffer pH6.0 is recommended for FFPE tissue sections.
Immunocytochemistry 1:100 to 1:500. Epitope retrieval with citrate buffer pH6.0 is recommended for FFPE cell sections.

IHC HUMAN CONTROLS Colon Carcinoma, HT-29 Cells

ADDITIONAL INFO <https://www.bethyl.com/product/A700-105>
Use the link above to view SDS, a current list of citations, and other product specific information.

This document certifies that this product has met all of the quality control standards defined by Bethyl Laboratories, Inc.
Eric McIntush, PhD | Chief Scientific Officer Date: March 24, 2020

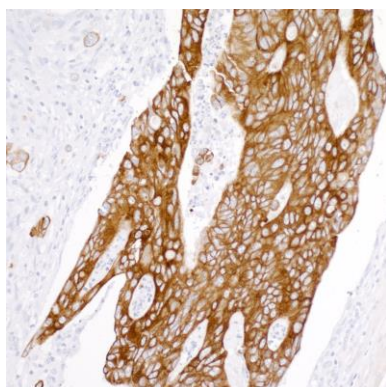


Detection of human Cytokeratin-20 by western blot.

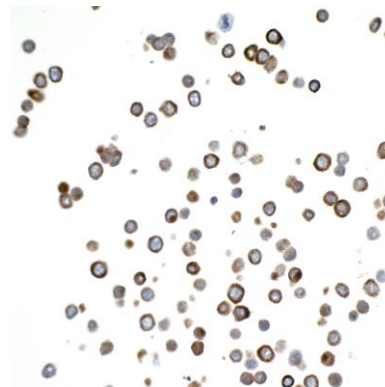
Samples: Whole cell lysate (50 µg) from HEK293T, HeLa, Jurkat, MOLT-4, HT-29, Hep-G2, HDLM-2, and MDA-MB-231 cells prepared using NETN lysis buffer. **Antibody:** Rabbit anti-Cytokeratin-20 recombinant monoclonal antibody [BLR105H] (A700-105 lot 1) used at 1:1000. **Secondary:** HRP-conjugated goat anti-rabbit IgG (A120-101P). Chemiluminescence with an exposure time of 1 second. Lower Panel: Rabbit anti-COPB2 antibody (A304-523A).

Detection of human Cytokeratin-20 by western blot of immunoprecipitates.

Samples: Whole cell lysate (1.0 mg per IP reaction; 20% of IP loaded) from HT-29 cells prepared using NETN lysis buffer. **Antibodies:** Rabbit anti-Cytokeratin-20 recombinant monoclonal antibody [BLR105H] (A700-105 lot 1) used for IP at 20 µl/mg lysate. Cytokeratin-20 was also immunoprecipitated by rabbit anti-Cytokeratin-20 antibody BL1464B-2D4. For blotting immunoprecipitated Cytokeratin-20, A700-105 was used at 1:1000. Chemiluminescence with an exposure time of 10 seconds.



Detection of human Cytokeratin 20 in FFPE colon carcinoma by IHC. **Antibody:** Rabbit anti-Cytokeratin 20 recombinant monoclonal antibody [BLR105H] (A700-105 lot 1). **Secondary:** HRP-conjugated goat anti-rabbit IgG (A120-501P). **Substrate:** DAB.



Detection of human Cytokeratin 20 in FFPE HT-29 cells by ICC. **Antibody:** Rabbit anti-Cytokeratin 20 recombinant monoclonal antibody [BLR105H] (A700-105 lot 1). **Secondary:** HRP-conjugated goat anti-rabbit IgG (A120-501P). **Substrate:** DAB.