

# CD11b Recombinant Monoclonal Antibody [BLR107H]

Rabbit Recombinant Monoclonal

Purified Protein ID NP\_001139280.1  
Catalog No. A700-107-T GeneID 3684  
Lot No. A700-107-T-1



**APPLICATIONS** WB, IP, IHC, ICC  
**SPECIES REACTIVITY** Human  
**AMOUNT** 10 µl (5+ tests)  
**CONCENTRATION** 250 µg/ml  
**STORAGE/SHELF LIFE** 2 – 8° C / 1 year from date of receipt  
**PHYSICAL STATE** Liquid  
**BUFFER** Borate Buffered Saline (BBS) pH 8.2 with 0.1% BSA and 0.09% Sodium Azide  
**ISOTYPE** IgG  
**CLONE #** BLR107H  
**ORIGIN** USA  
**PRODUCTION PROCEDURES** Recombinant antibody was purified from cell culture supernatant.

Immunogen was a recombinant protein representing the extracellular domain of human integrin alpha-M (aka CD11b, residues 17–334, NP\_001139280.1).

**APPLICATIONS** Centrifuge tube to remove product from lid. Optimal working dilutions should be determined experimentally by the investigator. Prepare working dilution immediately before use.

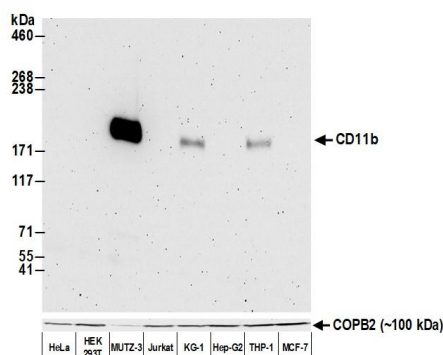
Western Blot 1:1,000  
Immunoprecipitation 20 µl/1 mg lysate  
Immunohistochemistry 1:100 to 1:500. Epitope retrieval with citrate buffer pH6.0 is recommended for FFPE tissue sections.  
Immunocytochemistry 1:100 to 1:500. Epitope retrieval with citrate buffer pH6.0 is recommended for FFPE cell sections.

**IHC HUMAN CONTROLS** Breast Carcinoma, Lung, Lung Carcinoma, Spleen, Tonsil, MUTZ-3 cells

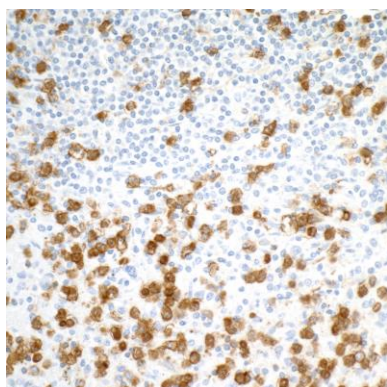
**ADDITIONAL INFO** <https://www.bethyl.com/product/A700-107-T>

Use the link above to view SDS, a current list of citations, and other product specific information.

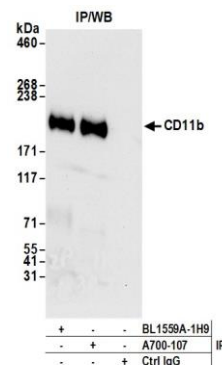
This document certifies that this product has met all of the quality control standards defined by Bethyl Laboratories, Inc.  
Eric McIntush, PhD | Chief Scientific Officer Date: June 4, 2020



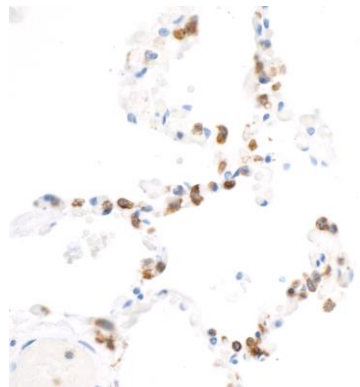
**Detection of human CD11b by western blot.** *Samples:* Whole cell lysate (50 µg) from HeLa, HEK293T, MUTZ-3, Jurkat, KG-1, Hep-G2, THP-1, and MCF-7 cells prepared using NETN lysis buffer. *Antibody:* Rabbit anti-CD11b recombinant monoclonal antibody [BLR107H] (A700-107-T lot 1) used at 1:1000. *Secondary:* HRP-conjugated goat anti-rabbit IgG (A120-101P). Chemiluminescence with an exposure time of 3 minutes. Lower Panel: Rabbit anti-COPB2 antibody (A304-523A).



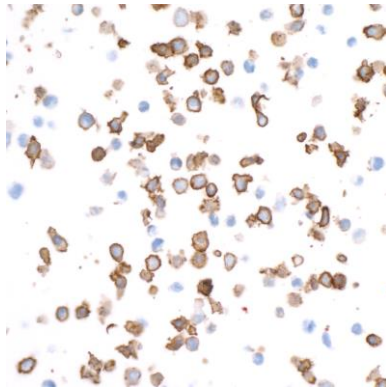
**Detection of human CD11b in FFPE spleen by IHC.** *Antibody:* Rabbit anti-CD11b recombinant monoclonal antibody [BLR107H] (A700-107-T lot 1). *Secondary:* HRP-conjugated goat anti-rabbit IgG (A120-501P). *Substrate:* DAB.



**Detection of human CD11b by western blot of immunoprecipitates.** *Samples:* Whole cell lysate (1.0 mg per IP reaction; 20% of IP loaded) from MUTZ-3 cells prepared using NETN lysis buffer. *Antibodies:* Rabbit anti-CD11b recombinant monoclonal antibody [BLR107H] (A700-107-T lot 1) used for IP at 20 µl/mg lysate. CD11b was also immunoprecipitated by rabbit anti-CD11b antibody BL-1559A-1H9. For blotting immunoprecipitated CD11b, A700-107-T was used at 1:1000. Chemiluminescence with an exposure time of 10 seconds.



**Detection of human CD11b in FFPE lung by IHC.** *Antibody:* Rabbit anti-CD11b recombinant monoclonal antibody [BLR107H] (A700-107-T lot 1). *Secondary:* HRP-conjugated goat anti-rabbit IgG (A120-501P). *Substrate:* DAB.

**Detection of human CD11b in FFPE MUTZ-3 cells by ICC.**

*Antibody:* Rabbit anti-CD11b recombinant monoclonal antibody [BLR107H] (A700-107-T lot 1). *Secondary:* HRP-conjugated goat anti-rabbit IgG (A120-501P). *Substrate:* DAB.