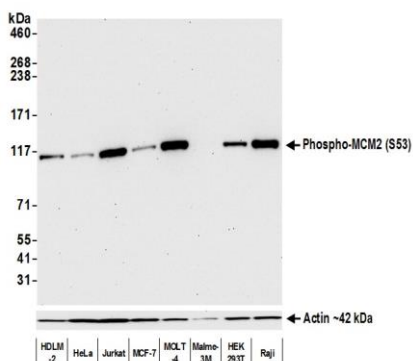
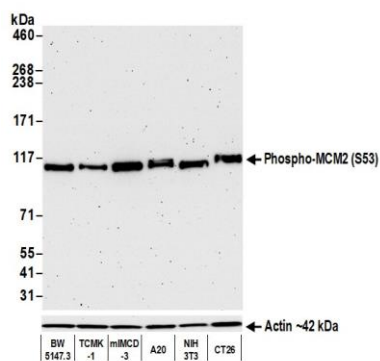


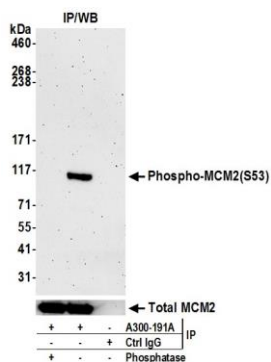
Phospho MCM2 (S53) Recombinant Monoclonal Antibody [BLR108 A700-108]



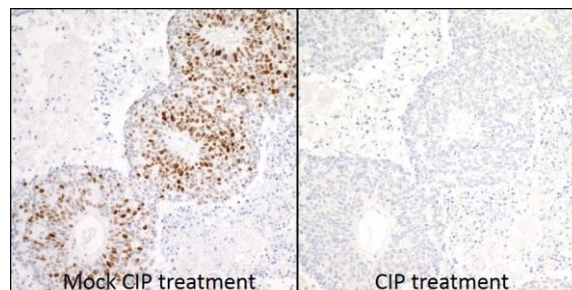
Detection of human Phospho-MCM2 (S53) by western blot. *Samples:* Whole cell lysate (10 µg) from HDLM-2, HeLa, Jurkat, MCF-7, MOLT-4, Malme-3M, HEK293T, and Raji cells prepared using NETN lysis buffer. *Antibody:* Rabbit anti-Phospho-MCM2 (S53) recombinant monoclonal antibody [BLR108H] (A700-108 lot 1) used at 1:1000. *Secondary:* HRP-conjugated goat anti-rabbit IgG (A120-101P). Chemiluminescence with an exposure time of 30 seconds. Lower Panel: Rabbit anti-Actin recombinant monoclonal (A700-057).



Detection of mouse Phospho-MCM2 (S53) by western blot. *Samples:* Whole cell lysate (10 µg) from BW5147.3, TCMK-1, mIMCD-3, A20, NIH 3T3, and CT26 cells prepared using NETN lysis buffer. *Antibody:* Rabbit anti-Phospho-MCM2 (S53) recombinant monoclonal antibody [BLR108H] (A700-108 lot 1) used at 1:1000. *Secondary:* HRP-conjugated goat anti-rabbit IgG (A120-101P). Chemiluminescence with an exposure time of 3 minutes. Lower Panel: Rabbit anti-Actin recombinant monoclonal (A700-057).

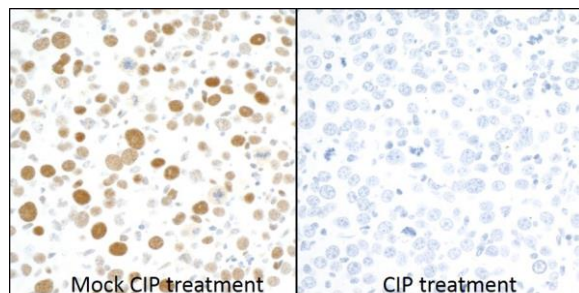


Detection of human Phospho-MCM2 (S53) by western blot of immunoprecipitates. *Samples:* Whole cell lysate (1.0 mg per IP reaction; 20% of IP loaded) from HeLa cells prepared using NETN lysis buffer. *Antibodies:* Rabbit anti-MCM2 antibody A300-191A used for IP. Immunoprecipitates were either treated with phosphatase (+) or mock treated (-). For blotting immunoprecipitated Phospho-MCM2 (S53), A700-108 was used at 1:1000. Chemiluminescence with an exposure time of 3 minutes. Lower Panel: Total MCM2 (A300-191A).

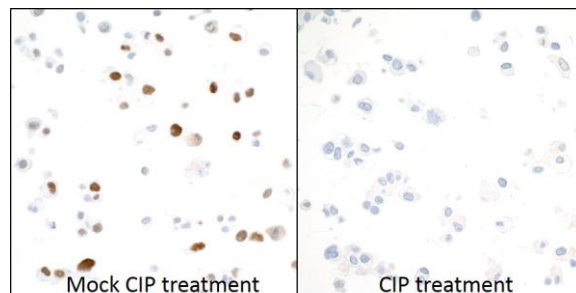


Detection of human Phospho-MCM2 (S53) in FFPE lung carcinoma by immunohistochemistry. *Antibody:* Rabbit anti-MCM2 (S53) recombinant monoclonal antibody [BLR108H] (A700-108 Lot 1). *Secondary:* HRP-conjugated goat anti-rabbit IgG (A120-501P). *Substrate:* DAB.

Phospho MCM2 (S53) Recombinant Monoclonal Antibody [BLR108 A700-108]



Detection of mouse Phospho-MCM2 (S53) in FFPE mouse renal cell carcinoma by immunohistochemistry. *Antibody:* Rabbit anti-MCM2 (S53) recombinant monoclonal antibody [BLR108H] (A700-108 Lot 1). *Secondary:* HRP-conjugated goat anti-rabbit IgG (A120-501P). *Substrate:* DAB.



Detection of human Phospho-MCM2 (S53) in FFPE OVCAR-4 cells by immunocytochemistry. *Antibody:* Rabbit anti-MCM2 (S53) recombinant monoclonal antibody [BLR108H] (A700-108 Lot 1). *Secondary:* HRP-conjugated goat anti-rabbit IgG (A120-501P). *Substrate:* DAB.