

# Phospho MCM2 (S53) Recombinant Monoclonal Antibody [BLR108H]

Rabbit Recombinant Monoclonal

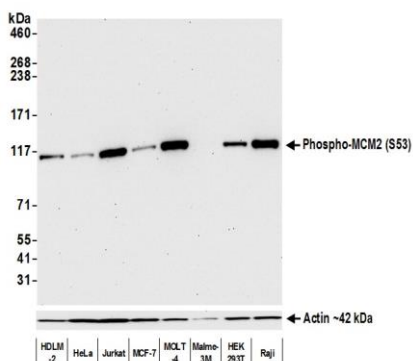
Purified Protein ID NP\_004517.2  
Catalog No. A700-108-T GeneID 4171  
Lot No. A700-108-T-1



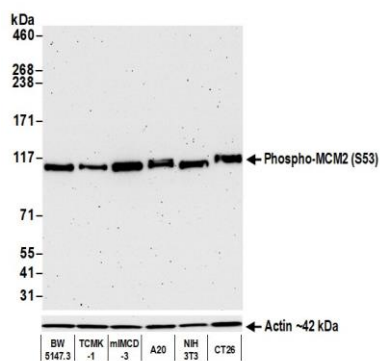
<b>APPLICATIONS</b>	WB, IHC, ICC
<b>SPECIES REACTIVITY</b>	Human, Mouse
<b>AMOUNT</b>	10 µl (5+ tests)
<b>CONCENTRATION</b>	250 µg/ml
<b>STORAGE/SHELF LIFE</b>	2 – 8° C / 1 year from date of receipt
<b>PHYSICAL STATE</b>	Liquid
<b>BUFFER</b>	Borate Buffered Saline (BBS) pH 8.2 with 0.1% BSA and 0.09% Sodium Azide
<b>ISOTYPE</b>	IgG
<b>CLONE #</b>	BLR108H
<b>ORIGIN</b>	USA
<b>PRODUCTION PROCEDURES</b>	Recombinant antibody was purified from cell culture supernatant.  Immunogen was a peptide surrounding phosphorylated serine 53 of human DNA replication licensing factor MCM2 using the numbering given in entry NP_004517.2 (Gene ID 4171).
<b>APPLICATIONS</b>	Centrifuge tube to remove product from lid. Optimal working dilutions should be determined experimentally by the investigator. Prepare working dilution immediately before use.  Western Blot 1:1,000  Immunohistochemistry 1:100 to 1:500. Epitope retrieval with citrate buffer pH6.0 is recommended for FFPE tissue sections.  Immunocytochemistry 1:100 to 1:500. Epitope retrieval with citrate buffer pH6.0 is recommended for FFPE cell sections.
<b>IHC HUMAN CONTROLS</b>	Breast Carcinoma, Colon Carcinoma, Lung Carcinoma, Ovarian Carcinoma, HEK293T Cells, HeLa Cells, OVCAR-4 Cells
<b>IHC MOUSE CONTROLS</b>	Colon Carcinoma CT26, RenCa Cells
<b>ADDITIONAL INFO</b>	<a href="https://www.bethyl.com/product/A700-108-T">https://www.bethyl.com/product/A700-108-T</a> Use the link above to view SDS, a current list of citations, and other product specific information.

This document certifies that this product has met all of the quality control standards defined by Bethyl Laboratories, Inc.  
Eric McIntush, PhD | Chief Scientific Officer Date: June 25, 2020

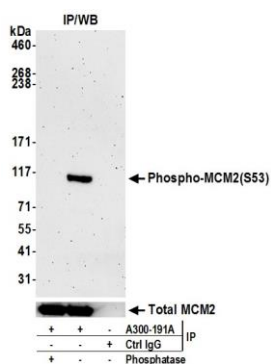
# Phospho MCM2 (S53) Recombinant Monoclonal Antibody [BLR108 A700-108-T



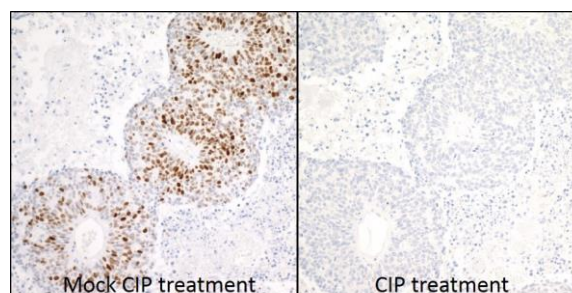
**Detection of human Phospho-MCM2 (S53) by western blot.** *Samples:* Whole cell lysate (10 µg) from HDLM-2, HeLa, Jurkat, MCF-7, MOLT-4, Malme-3M, HEK293T, and Raji cells prepared using NETN lysis buffer. *Antibody:* Rabbit anti-Phospho-MCM2 (S53) recombinant monoclonal antibody [BLR108H] (A700-108-T lot 1) used at 1:1000. *Secondary:* HRP-conjugated goat anti-rabbit IgG (A120-101P). Chemiluminescence with an exposure time of 30 seconds. Lower Panel: Rabbit anti-Actin recombinant monoclonal (A700-057).



**Detection of mouse Phospho-MCM2 (S53) by western blot.** *Samples:* Whole cell lysate (10 µg) from BW5147.3, TCMK-1, mIMCD-3, A20, NIH 3T3, and CT26 cells prepared using NETN lysis buffer. *Antibody:* Rabbit anti-Phospho-MCM2 (S53) recombinant monoclonal antibody [BLR108H] (A700-108-T lot 1) used at 1:1000. *Secondary:* HRP-conjugated goat anti-rabbit IgG (A120-101P). Chemiluminescence with an exposure time of 3 minutes. Lower Panel: Rabbit anti-Actin recombinant monoclonal (A700-057).

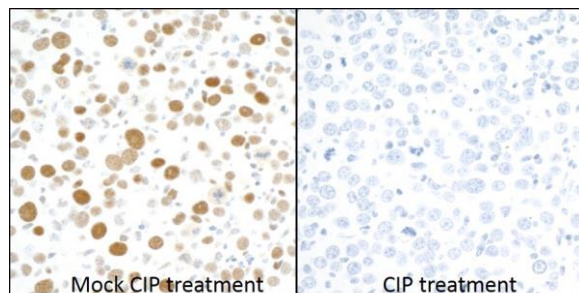


**Detection of human Phospho-MCM2 (S53) by western blot of immunoprecipitates.** *Samples:* Whole cell lysate (1.0 mg per IP reaction; 20% of IP loaded) from HeLa cells prepared using NETN lysis buffer. *Antibodies:* Rabbit anti-MCM2 antibody A300-191A used for IP. Immunoprecipitates were either treated with phosphatase (+) or mock treated (-). For blotting immunoprecipitated Phospho-MCM2 (S53), A700-108-T lot 1 was used at 1:1000. Chemiluminescence with an exposure time of 3 minutes. Lower Panel: Total MCM2 (A300-191A).

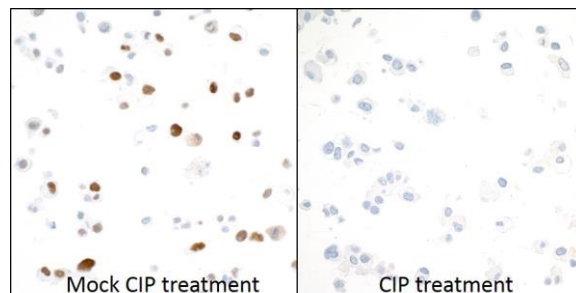


**Detection of human Phospho-MCM2 (S53) in FFPE lung carcinoma by immunohistochemistry.** *Antibody:* Rabbit anti-MCM2 (S53) recombinant monoclonal antibody [BLR108H] (A700-108-T Lot 1). *Secondary:* HRP-conjugated goat anti-rabbit IgG (A120-501P). *Substrate:* DAB.

## Phospho MCM2 (S53) Recombinant Monoclonal Antibody [BLR108 A700-108-T



**Detection of mouse Phospho-MCM2 (S53) in FFPE mouse renal cell carcinoma by immunohistochemistry.** *Antibody:* Rabbit anti-MCM2 (S53) recombinant monoclonal antibody [BLR108H] (A700-108-T Lot 1). *Secondary:* HRP-conjugated goat anti-rabbit IgG (A120-501P). *Substrate:* DAB.



**Detection of human Phospho-MCM2 (S53) in FFPE OVCAR-4 cells by immunocytochemistry.** *Antibody:* Rabbit anti-MCM2 (S53) recombinant monoclonal antibody [BLR108H] (A700-108-T Lot 1). *Secondary:* HRP-conjugated goat anti-rabbit IgG (A120-501P). *Substrate:* DAB.