

T-bet/TBX21 Recombinant Monoclonal Antibody [BLR110H]

Rabbit Recombinant Monoclonal

Purified Protein ID NP_037483.1
Catalog No. A700-110-T GeneID 30009
Lot No. A700-110-T-1



APPLICATIONS WB, IP, IHC, ICC
SPECIES REACTIVITY Human
AMOUNT 10 µl (5+ tests)
CONCENTRATION 1000 µg/ml
STORAGE/SHELF LIFE 2 – 8° C / 1 year from date of receipt
PHYSICAL STATE Liquid
BUFFER Borate Buffered Saline (BBS) pH 8.2 with 0.09% Sodium Azide, BSA Free
ISOTYPE IgG
CLONE # BLR110H
ORIGIN USA
PRODUCTION PROCEDURES Recombinant antibody was purified from cell culture supernatant.

Immunogen was a peptide representing a region between residue 485 and the C-terminus (residue 535) of human T-box transcription factor TBX21 using the numbering given in entry NP_037483.1 (Gene ID 30009).

APPLICATIONS Centrifuge tube to remove product from lid. Optimal working dilutions should be determined experimentally by the investigator. Prepare working dilution immediately before use.

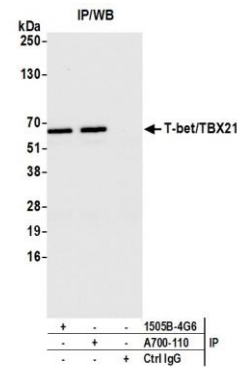
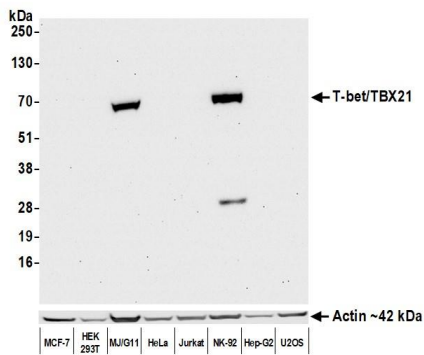
Western Blot 1:1,000
Immunoprecipitation 6 µl/1 mg lysate
Immunohistochemistry 1:100 to 1:500. Epitope retrieval with citrate buffer pH6.0 is recommended for FFPE tissue sections.
Immunocytochemistry 1:100 to 1:500. Epitope retrieval with citrate buffer pH6.0 is recommended for FFPE cell sections.

IHC HUMAN CONTROLS Hodgkins Lymphoma, Ovarian Carcinoma, Seminoma, MJ Cells

ADDITIONAL INFO <https://www.bethyl.com/product/A700-110-T>

Use the link above to view SDS, a current list of citations, and other product specific information.

This document certifies that this product has met all of the quality control standards defined by Bethyl Laboratories, Inc.
Eric McIntush, PhD | Chief Scientific Officer Date: June 4, 2020

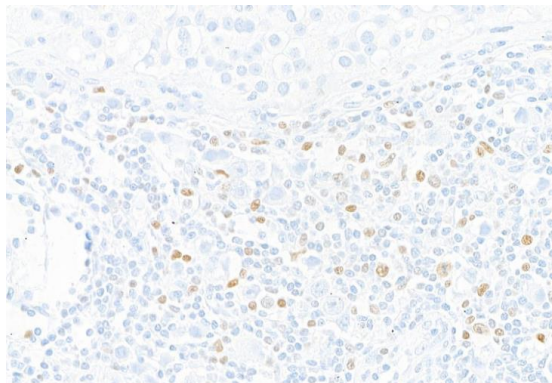


Detection of human T-bet/TBX21 by western blot.

Samples: Whole cell lysate (50 µg) from MCF-7, HEK293T, MJ/G11, HeLa, Jurkat, NK-92, Hep-G2, and U2OS cells prepared using NETN lysis buffer. *Antibody:* Rabbit anti-T-bet/TBX21 recombinant monoclonal antibody [BLR110H] (A700-110-T lot 1) used at 1:1000. *Secondary:* HRP-conjugated goat anti-rabbit IgG (A120-101P). Chemiluminescence with an exposure time of 30 seconds. Lower Panel: Rabbit anti-Actin recombinant monoclonal (A700-057).

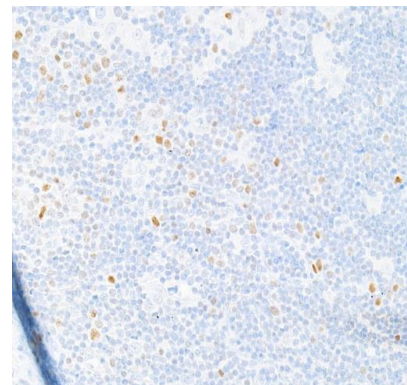
Detection of human T-bet/TBX21 by western blot of immunoprecipitates.

Samples: Whole cell lysate (1.0 mg per IP reaction; 20% of IP loaded) from MJ/G11 cells prepared using NETN lysis buffer. *Antibodies:* Rabbit anti-T-bet/TBX21 recombinant monoclonal antibody [BLR110H] (A700-110-T lot 1) used for IP at 6 µl per reaction. T-bet/TBX21 was also immunoprecipitated by rabbit anti-T-bet/TBX21 antibody (BL-1505B-4G6). For blotting immunoprecipitated T-bet/TBX21, A700-110-T was used at 1:1000. Chemiluminescence with an exposure time of 3 seconds.



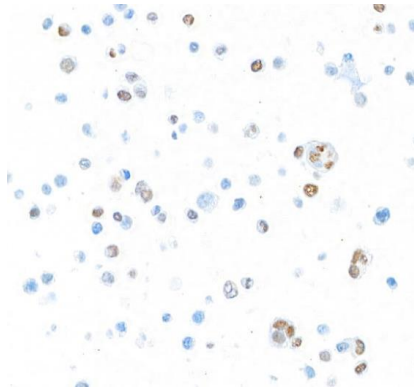
Detection of human T-bet/TBX21 in FFPE seminoma by IHC.

Antibody: Rabbit anti-T-bet/TBX21 recombinant monoclonal antibody [BLR110H] (A700-110-T lot 1). *Secondary:* HRP-conjugated goat anti-rabbit IgG (A120-501P). *Substrate:* DAB.



Detection of human T-bet/TBX21 in FFPE Hodgkin's lymphoma by IHC.

Antibody: Rabbit anti-T-bet/TBX21 recombinant monoclonal antibody [BLR110H] (A700-110-T lot 1). *Secondary:* HRP-conjugated goat anti-rabbit IgG (A120-501P). *Substrate:* DAB.

**Detection of human T-bet/TBX21 in FFPE MJ cells by ICC.**

Antibody: Rabbit anti-T-bet/TBX21 recombinant monoclonal antibody [BLR110H] (A700-110-T lot 1).

Secondary: HRP-conjugated goat anti-rabbit IgG (A120-501P). *Substrate:* DAB.