

CEACAM8/CD66b Recombinant Monoclonal Antibody [BLR111H]

Rabbit Recombinant Monoclonal

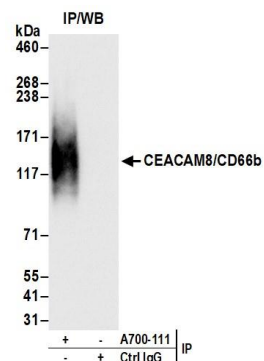
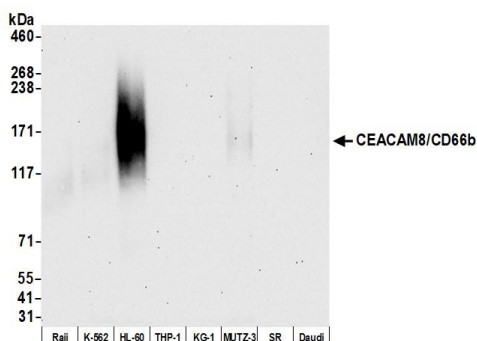
Purified Protein ID NP_001807.2
Catalog No. A700-111-T GeneID 1088
Lot No. A700-111-T-1



APPLICATIONS	WB, IP, IHC
SPECIES REACTIVITY	Human
AMOUNT	10 µl (5+ tests)
CONCENTRATION	250 µg/ml
STORAGE/SHELF LIFE	2 - 8° C / 1 year from date of receipt
PHYSICAL STATE	Liquid
BUFFER	Borate Buffered Saline (BBS) pH 8.2 with 0.1% BSA and 0.09% Sodium Azide
ISOTYPE	IgG
CLONE #	BLR111H
ORIGIN	USA
PRODUCTION PROCEDURES	Recombinant antibody was purified from cell culture supernatant. Immunogen was a recombinant protein representing the extracellular domain of human carcinoembryonic antigen-related cell adhesion molecule 8 (aka CD66b, residues 23-320, NP_001807.2).
APPLICATIONS	Centrifuge tube to remove product from lid. Optimal working dilutions should be determined experimentally by the investigator. Prepare working dilution immediately before use. Western Blot 1:1,000 Immunoprecipitation 20 µl/1 mg lysate Immunohistochemistry 1:100 to 1:500. Epitope retrieval with citrate buffer pH6.0 is recommended for FFPE tissue sections.
IHC HUMAN CONTROLS	Breast Carcinoma, Lung Carcinoma, Placenta, Spleen
ADDITIONAL INFO	https://www.bethyl.com/product/A700-111-T Use the link above to view SDS, a current list of citations, and other product specific information.

This document certifies that this product has met all of the quality control standards defined by Bethyl Laboratories, Inc.
Eric McIntush, PhD | Chief Scientific Officer Date: July 24, 2020

CEACAM8/CD66b Recombinant Monoclonal Antibody [BLR111H] A700-111-T

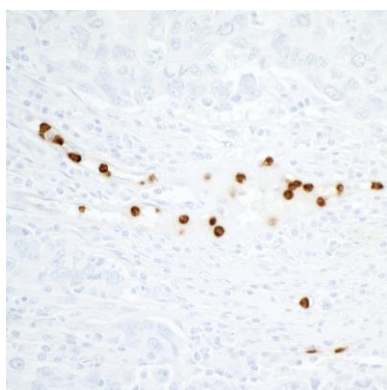


Detection of human CEACAM8/CD66b by western blot.

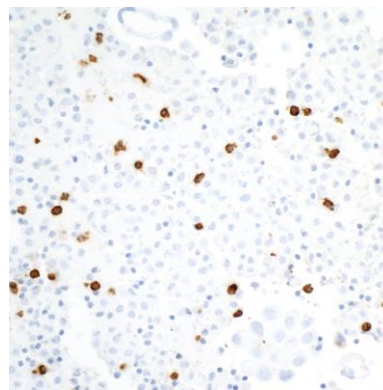
Samples: Whole cell lysate (10 µg) from Raji, K-562, HL-60, THP-1, KG-1, MUTZ-3, SR, and Daudi cells prepared using NETN lysis buffer. **Antibody:** Rabbit anti-CEACAM8/CD66b recombinant monoclonal antibody [BLR117H] (A700-111-T lot 1) used at 1:1000. **Secondary:** HRP-conjugated goat anti-rabbit IgG (A120-101P). Chemiluminescence with an exposure time of 30 seconds.

Detection of human CEACAM8/CD66b by western blot of immunoprecipitates.

Samples: Whole cell lysate (1.0 mg per IP reaction; 20% of IP loaded) from HL-60 cells prepared using NETN lysis buffer. **Antibody:** Rabbit anti-CEACAM8/CD66b recombinant monoclonal antibody [BLR117H] (A700-111-T lot 1) used at 20 µl/mg lysate. For blotting immunoprecipitated CEACAM8/CD66b, A700-111-T was used at 1:1000. Chemiluminescence with an exposure time of 30 seconds.



Detection of human CEACAM8/CD66b in FFPE breast carcinoma by immunohistochemistry. **Antibody:** Rabbit anti-CEACAM8/CD66b recombinant monoclonal antibody [BLR111H] (A700-111-T Lot 1). **Secondary:** HRP-conjugated goat anti-rabbit IgG (A120-501P). **Substrate:** DAB.



Detection of human CEACAM8/CD66b in FFPE lung carcinoma pleural effusion by immunohistochemistry. **Antibody:** Rabbit anti-CEACAM8/CD66b recombinant monoclonal antibody [BLR111H] (A700-111-T Lot 1). **Secondary:** HRP-conjugated goat anti-rabbit IgG (A120-501P). **Substrate:** DAB.