

MLH1 Recombinant Monoclonal Antibody [BLR112H]

Rabbit Recombinant Monoclonal

Purified Protein ID NP_000240.1
Catalog No. A700-112-T GeneID 4292
Lot No. A700-112-T-1



APPLICATIONS WB, IP, IHC, ICC
SPECIES REACTIVITY Human
AMOUNT 10 µl (5+ tests)
CONCENTRATION 1000 µg/ml
STORAGE/SHELF LIFE 2 – 8° C / 1 year from date of receipt
PHYSICAL STATE Liquid
BUFFER Borate Buffered Saline (BBS) pH 8.2 with 0.09% Sodium Azide, BSA Free
ISOTYPE IgG
CLONE # BLR112H
ORIGIN USA
PRODUCTION PROCEDURES Recombinant antibody was purified from cell culture supernatant.

Immunogen was a peptide representing a region between residue 450 and 500 of human DNA mismatch repair protein Mlh1 using the numbering given in entry NP_000240.1 (Gene ID 4292).

APPLICATIONS Centrifuge tube to remove product from lid. Optimal working dilutions should be determined experimentally by the investigator. Prepare working dilution immediately before use.

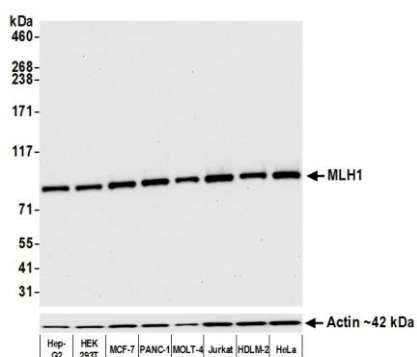
Western Blot 1:1,000
Immunoprecipitation 6 µl/1 mg lysate
Immunohistochemistry 1:100 to 1:500. Epitope retrieval with citrate buffer pH6.0 is recommended for FFPE tissue sections.
Immunocytochemistry 1:100 to 1:500. Epitope retrieval with citrate buffer pH6.0 is recommended for FFPE cell sections.

IHC HUMAN CONTROLS Breast Carcinoma, Lung Carcinoma, Ovarian Carcinoma, Seminoma, A-549 Cells, HeLa Cells, MCF-7 Cells, OVCAR-4 Cells, PANC-1 Cells

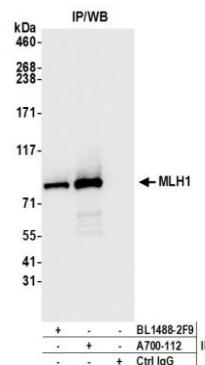
ADDITIONAL INFO <https://www.bethyl.com/product/A700-112-T>

Use the link above to view SDS, a current list of citations, and other product specific information.

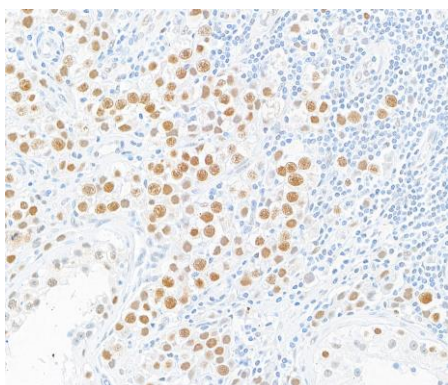
This document certifies that this product has met all of the quality control standards defined by Bethyl Laboratories, Inc.
Eric McIntush, PhD | Chief Scientific Officer Date: June 18, 2020



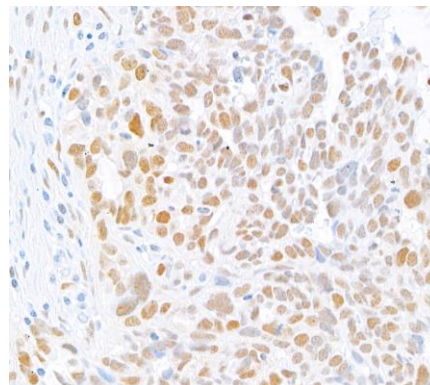
Detection of human MLH1 by western blot. *Samples:* Whole cell lysate (5 µg) from Hep-G2, HEK293T, MCF-7, PANC-1, MOLT-4, Jurkat, HDLM-2, and HeLa cells prepared using NETN lysis buffer. *Antibody:* Rabbit anti-MLH1 recombinant monoclonal antibody [BLR112H] (A700-112-T lot 1) used at 1:1000. *Secondary:* HRP-conjugated goat anti-rabbit IgG (A120-101P). Chemiluminescence with an exposure time of 10 seconds. Lower Panel: Rabbit anti-Actin recombinant monoclonal (A700-057).



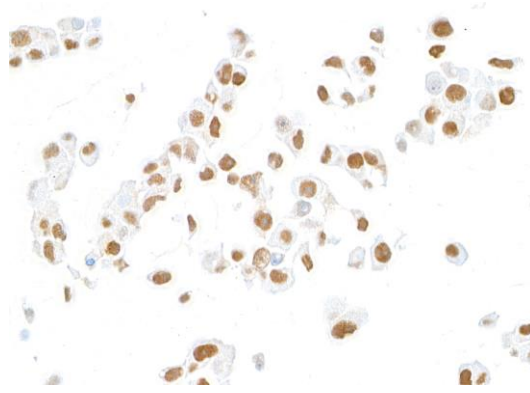
Detection of human MLH1 by western blot of immunoprecipitates. *Samples:* Whole cell lysate (1.0 mg per IP reaction; 20% of IP loaded) from Jurkat cells prepared using NETN lysis buffer. *Antibodies:* Rabbit anti-MLH1 recombinant monoclonal antibody [BLR112H] (A700-112-T lot 1) used for IP at 6 µl per reaction. MLH1 was also immunoprecipitated by rabbit anti-MLH1 antibody BL1488-2F9. For blotting immunoprecipitated MLH1, A700-112-T was used at 1:1000. Chemiluminescence with an exposure time of 3 seconds.



Detection of human MLH1 in FFPE testicular seminoma by Immunohistochemistry. *Antibody:* Rabbit anti-MLH1 recombinant monoclonal antibody [BLR112H] (A700-112-T Lot 1). *Secondary:* HRP-conjugated goat anti-rabbit IgG (A120-501P). *Substrate:* DAB.



Detection of human MLH1 in FFPE ovarian carcinoma by Immunohistochemistry. *Antibody:* Rabbit anti-MLH1 recombinant monoclonal antibody [BLR112H] (A700-112-T Lot 1). *Secondary:* HRP-conjugated goat anti-rabbit IgG (A120-501P). *Substrate:* DAB.



Detection of human MLH1 in FFPE PANC-1 cells by ICC.
Antibody: Rabbit anti-MLH1 recombinant monoclonal antibody [BLR112H] (A700-112-T Lot 1). *Secondary:* HRP-conjugated goat anti-rabbit IgG (A120-501P). *Substrate:* DAB.