

# ZEB2/SIP Recombinant Monoclonal Antibody [BLR115H]

Rabbit Recombinant Monoclonal

Purified Protein ID NP\_055610.1  
Catalog No. A700-115-T GeneID 9839  
Lot No. A700-115-T-1

---

<b>APPLICATIONS</b>	WB, IP, IHC, ICC
<b>SPECIES REACTIVITY</b>	Human
<b>AMOUNT</b>	10 µl (5+ tests)
<b>CONCENTRATION</b>	50 µg/ml
<b>STORAGE/SHELF LIFE</b>	2 – 8°C / 1 year from date of receipt
<b>PHYSICAL STATE</b>	Liquid
<b>BUFFER</b>	Borate Buffered Saline (BBS) pH 8.2 with 0.1% BSA and 0.09% Sodium Azide
<b>ISOTYPE</b>	IgG
<b>CLONE #</b>	BLR115H
<b>ORIGIN</b>	USA
<b>PRODUCTION PROCEDURES</b>	Recombinant antibody was purified from cell culture supernatant.

Immunogen was a peptide representing a region between residue 1164 and the C-terminus (residue 1214) of human zinc finger E-box-binding homeobox 2 using the numbering given in entry NP\_055610.1 (Gene ID 9839).

**APPLICATIONS** Centrifuge tube to remove product from lid. Optimal working dilutions should be determined experimentally by the investigator. Prepare working dilution immediately before use.

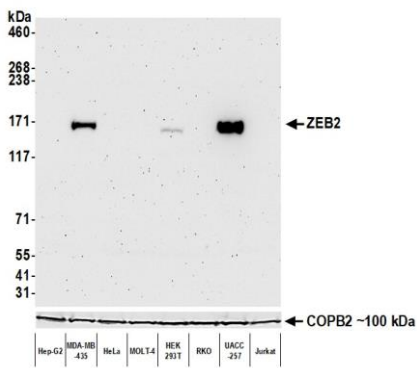
Western Blot	1:1,000
Immunoprecipitation	20 µl/1 mg lysate
Immunohistochemistry	1:100 to 1:500. Epitope retrieval with citrate buffer pH6.0 is recommended for FFPE tissue sections.
Immunocytochemistry	1:100 to 1:500. Epitope retrieval with citrate buffer pH6.0 is recommended for FFPE cell sections.

**IHC HUMAN CONTROLS** Breast Carcinoma, Colon Carcinoma, Prostate Carcinoma, K-562 Cells, MDA-MB-435 Cells, UACC-257 Cells

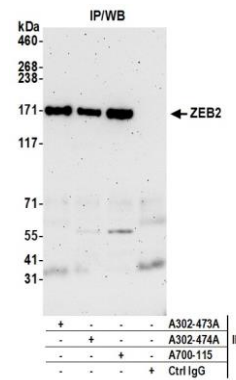
**ADDITIONAL INFO** <https://www.fortislifesciences.com/p/A700-115-T>

Use the link above to view SDS, a current list of citations, and other product specific information.

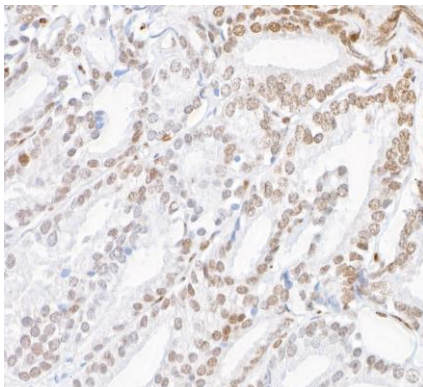
This document certifies that this product has met all of the quality control standards defined by Bethyl Laboratories, Inc.  
Michael Spencer, PhD Date: July 27, 2022



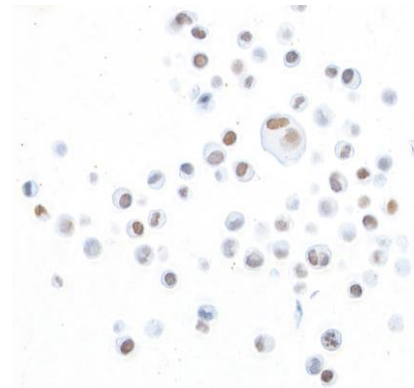
**Detection of human ZEB2/SIP by western blot.** *Samples:* Whole cell lysate (50 µg) from Hep-G2, MDA-MB-435, HeLa, MOLT-4, HEK293T, RKO, UACC-257, and Jurkat cells prepared using NETN lysis buffer. *Antibody:* Rabbit anti-ZEB2 recombinant monoclonal antibody [BLR115H] (A700-115-T lot 1) used at 1:1000. *Secondary:* HRP-conjugated goat anti-rabbit IgG (A120-101P). Chemiluminescence with an exposure time of 3 minutes. Lower Panel: Rabbit anti-COPB2 (A300-523A).



**Detection of human ZEB2/SIP by western blot of immunoprecipitates.** *Samples:* Whole cell lysate (1.0 mg per IP reaction; 20% of IP loaded) from MDA-MB-435 cells prepared using NETN lysis buffer. *Antibodies:* Rabbit anti-ZEB2 recombinant monoclonal antibody [BLR115H] (A700-115-T lot 1) used for IP at 20 µl/mg lysate. ZEB2 was also immunoprecipitated by rabbit anti-ZEB2 antibodies A302-473A and A302-474A. For blotting immunoprecipitated ZEB2, A700-115-T was used at 1:1000. Chemiluminescence with an exposure time of 3 minutes.



**Detection of human ZEB2/SIP in FFPE prostate carcinoma by immunohistochemistry.** *Antibody:* Rabbit anti-ZEB2/SIP recombinant monoclonal antibody [BLR115H] (A700-115-T lot 1). *Secondary:* HRP-conjugated goat anti-rabbit IgG (A120-501P). *Substrate:* DAB.



**Detection of human ZEB2/SIP in FFPE MDA-MB-435 cells by immunocytochemistry.** *Antibody:* Rabbit anti-ZEB2/SIP recombinant monoclonal antibody [BLR115H] (A700-115-T lot 1). *Secondary:* HRP-conjugated goat anti-rabbit IgG (A120-501P). *Substrate:* DAB.