

MSH2 Recombinant Monoclonal Antibody [BLR116H]

Rabbit Recombinant Monoclonal

Purified Protein ID NP_000242.1
Catalog No. A700-116-T GeneID 4436
Lot No. A700-116-T-1



APPLICATIONS WB, IP, IHC, ICC

SPECIES REACTIVITY Human

AMOUNT 10 μ l (5+ tests)

CONCENTRATION 250 μ g/ml

STORAGE/SHELF LIFE 2 – 8° C / 1 year from date of receipt

PHYSICAL STATE Liquid

BUFFER Borate Buffered Saline (BBS) pH 8.2 with 0.1% BSA and 0.09% Sodium Azide

ISOTYPE IgG

CLONE # BLR116H

ORIGIN USA

PRODUCTION PROCEDURES Recombinant antibody was purified from cell culture supernatant.

Immunogen was a peptide representing a region between residue 625 and 675 of human DNA mismatch repair protein Msh2 using the numbering given in entry NP_000242.1 (Gene ID 4436).

APPLICATIONS Centrifuge tube to remove product from lid. Optimal working dilutions should be determined experimentally by the investigator. Prepare working dilution immediately before use.

Western Blot 1:1,000

Immunoprecipitation 20 μ l/1 mg lysate

Immunohistochemistry 1:100 to 1:500. Epitope retrieval with citrate buffer pH6.0 is recommended for FFPE tissue sections.

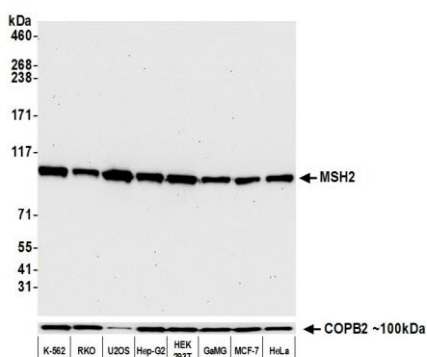
Immunocytochemistry 1:100 to 1:500. Epitope retrieval with citrate buffer pH6.0 is recommended for FFPE cell sections.

IHC HUMAN CONTROLS Breast Carcinoma, Colon Carcinoma, Lung Carcinoma, Ovarian Carcinoma, Prostate Carcinoma, A-549 Cells, HeLa Cells, OVCAR-3 Cells, OVCAR-8 Cells, RT-4 Cells

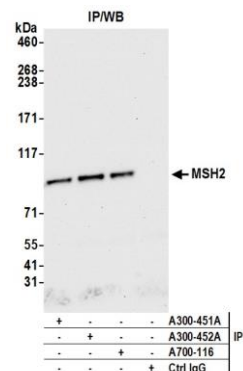
ADDITIONAL INFO <https://www.bethyl.com/product/A700-116-T>

Use the link above to view SDS, a current list of citations, and other product specific information.

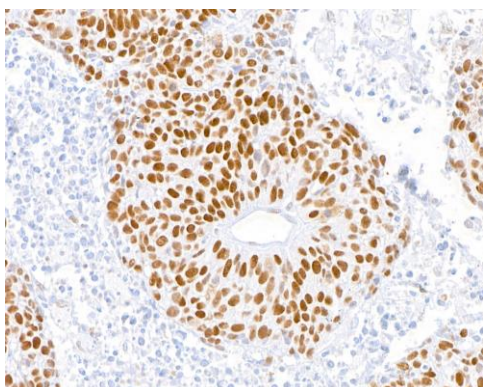
This document certifies that this product has met all of the quality control standards defined by Bethyl Laboratories, Inc.
Eric McIntush, PhD | Chief Scientific Officer Date: June 30, 2020



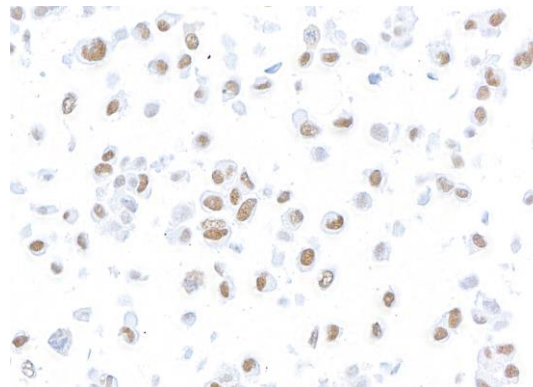
Detection of human MSH2 by western blot. *Samples:* Whole cell lysate (10 μ g) from K-562, RKO, U2OS, Hep-G2, HEK293T, GaMG, MCF-7, and HeLa cells prepared using NETN lysis buffer. *Antibody:* Rabbit anti-MSH2 recombinant monoclonal antibody [BLR116H] (A700-116-T lot 1) used at 1:1000. *Secondary:* HRP-conjugated goat anti-rabbit IgG (A120-101P). Chemiluminescence with an exposure time of 30 seconds. Lower Panel: Rabbit anti-CopB2 (A304-523A).



Detection of human MSH2 by western blot of immunoprecipitates. *Samples:* Whole cell lysate (1.0 mg per IP reaction; 20% of IP loaded) from HEK293T cells prepared using NETN lysis buffer. *Antibodies:* Rabbit anti-MSH2 recombinant monoclonal antibody [BLR116H] (A700-116-T lot 1) used for IP at 20 μ l/mg lysate. MSH2 was also immunoprecipitated by rabbit anti-MSH2 antibodies A300-451A and A300-452A. For blotting immunoprecipitated MSH2, A700-116-T was used at 1:1000. Chemiluminescence with an exposure time of 3 seconds.



Detection of human MSH2 in FFPE lung carcinoma by immunohistochemistry. *Antibody:* Rabbit anti-MSH2 recombinant monoclonal antibody [BLR116H] (A700-116-T lot 1). *Secondary:* HRP-conjugated goat anti-rabbit IgG (A120-501P). *Substrate:* DAB.



Detection of human MSH2 in FFPE OVCAR-8 by immunocytochemistry. *Antibody:* Rabbit anti-MSH2 recombinant monoclonal antibody [BLR116H] (A700-116-T lot 1). *Secondary:* HRP-conjugated goat anti-rabbit IgG (A120-501P). *Substrate:* DAB.