

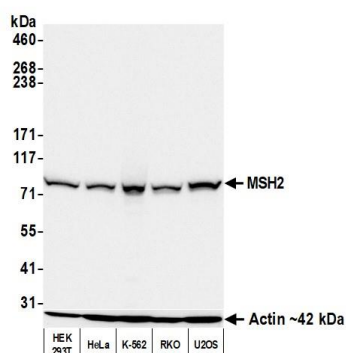
MSH2 Recombinant Monoclonal Antibody [BLR116H]

Rabbit Recombinant Monoclonal

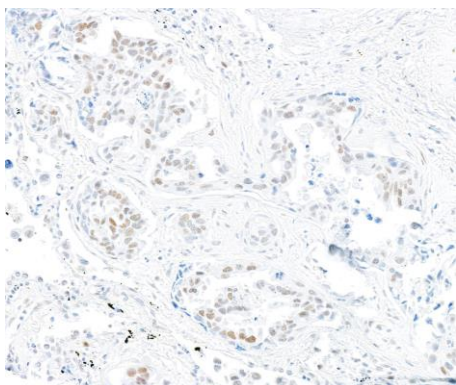
Purified		RefSeq ID	NP_000242.1
Catalog No.	A700-116-T	Uniprot ID	P43246
Lot No.	3	GeneID	4436

APPLICATIONS	WB, IP, IHC, ICC
SPECIES REACTIVITY	Human
AMOUNT	10 µl (5+ tests)
CONCENTRATION	250 µg/ml
STORAGE/SHELF LIFE	2 – 8°C / 1 year from date of receipt
PHYSICAL STATE	Liquid
BUFFER	Borate Buffered Saline (BBS) pH 8.2 with 0.1% BSA and 0.09% Sodium Azide
ISOTYPE	IgG
CLONE #	BLR116H
ORIGIN	USA
PRODUCTION PROCEDURES	Recombinant antibody was purified from cell culture supernatant. Immunogen was a peptide representing a region between residue 625 and 675 of human DNA mismatch repair protein Msh2 using the numbering given in entry NP_000242.1 (Gene ID 4436).
APPLICATIONS	Centrifuge tube to remove product from lid. Optimal working dilutions should be determined experimentally by the investigator. Prepare working dilution immediately before use. Western Blot 1:1,000 Immunoprecipitation 20 µl/1 mg lysate Immunohistochemistry 1:100 to 1:500. Epitope retrieval with citrate buffer pH6.0 is recommended for FFPE tissue sections. Immunocytochemistry 1:100 to 1:500. Epitope retrieval with citrate buffer pH6.0 is recommended for FFPE cell sections.
IHC HUMAN CONTROLS	Breast Carcinoma, Colon Carcinoma, Lung Carcinoma, Ovarian Carcinoma, Prostate Carcinoma, A549 Cells, HeLa Cells, OVCAR-3 Cells, OVCAR-8 Cells, RT-4 Cells
ADDITIONAL INFO	https://www.fortislifesciences.com/p/A700-116-T Use the link above to view SDS, a current list of citations, and other product specific information.

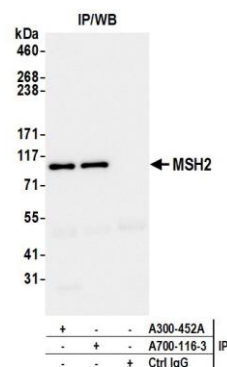
This document certifies that this product has met all of the quality control standards defined by Bethyl Laboratories, Inc.
Michael Spencer, PhD Date: September 13, 2023



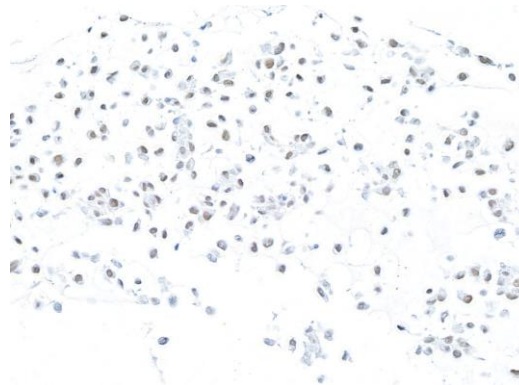
Detection of human MSH2 by western blot. *Samples:* Whole cell lysate (50 µg) from HEK293T, HeLa, K-562, RKO, and U2OS cells prepared using NETN lysis buffer. *Antibody:* Rabbit anti-MSH2 recombinant monoclonal antibody [BLR116H] (A700-116 lot 3) used at 1:1000. *Secondary:* HRP-conjugated goat anti-rabbit IgG (A120-101P). *Detection:* Chemiluminescence with an exposure time of 3 seconds. Lower Panel: Rabbit anti-Actin recombinant monoclonal antibody [BLR057F] (A700-057).



Detection of human MSH2 by immunohistochemistry. *Sample:* FFPE section of lung carcinoma. *Antibody:* Rabbit anti-MSH2 recombinant monoclonal antibody [BLR116H] (A700-116 lot 3). *Secondary:* HRP-conjugated goat anti-rabbit IgG (A120-501P).



Detection of human MSH2 by western blot of immunoprecipitates. *Samples:* Whole cell lysate (1.0 mg per IP reaction; 20% of IP loaded) from HEK293T cells prepared using NETN lysis buffer. *Antibodies:* Rabbit anti-MSH2 recombinant monoclonal antibody [BLR116H] (A700-116 lot 3) used for IP at 20 µl/mg lysate. MSH2 was also immunoprecipitated by a second antibody against a different epitope of MSH2 (A300-452A). For blotting immunoprecipitated MSH2, A700-116 was used at 1:1000. *Detection:* Chemiluminescence with an exposure time of 3 seconds.



Detection of human MSH2 by immunocytochemistry. *Sample:* FFPE section of OVCAR-8 cells. *Antibody:* Rabbit anti-MSH2 recombinant monoclonal antibody [BLR116H] (A700-116 lot 3). *Secondary:* HRP-conjugated goat anti-rabbit IgG (A120-501P).