

MSH6 Recombinant Monoclonal Antibody [BLR117H]

Rabbit Recombinant Monoclonal

Purified Protein ID NP_000170.1
Catalog No. A700-117-T GeneID 2956
Lot No. A700-117-T-1



APPLICATIONS WB, IP, IHC, ICC
SPECIES REACTIVITY Human
AMOUNT 10 µl (5+ tests)
CONCENTRATION 250 µg/ml
STORAGE/SHELF LIFE 2 – 8° C / 1 year from date of receipt
PHYSICAL STATE Liquid
BUFFER Borate Buffered Saline (BBS) pH 8.2 with 0.1% BSA and 0.09% Sodium Azide
ISOTYPE IgG
CLONE # BLR117H
ORIGIN USA
PRODUCTION PROCEDURES Recombinant antibody was purified from cell culture supernatant.

Immunogen was a peptide representing a region between residue 1310 and the C-terminus (residue 1360) of human DNA mismatch repair protein Msh6 using the numbering given in entry NP_000170.1 (Gene ID 2956).

APPLICATIONS Centrifuge tube to remove product from lid. Optimal working dilutions should be determined experimentally by the investigator. Prepare working dilution immediately before use.

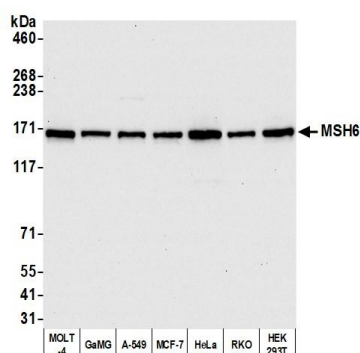
Western Blot 1:1,000
Immunoprecipitation 20 µl/1 mg lysate
Immunohistochemistry 1:100 to 1:500. Epitope retrieval with citrate buffer pH6.0 is recommended for FFPE tissue sections.
Immunocytochemistry 1:100 to 1:500. Epitope retrieval with citrate buffer pH6.0 is recommended for FFPE cell sections.

IHC HUMAN CONTROLS Breast Carcinoma, Colon Carcinoma, Gastric Carcinoma, Non-Hodgkins Lymphoma, Osteosarcoma, Ovarian Carcinoma, Placenta, Renal Cell Carcinoma, Testicular Seminoma, HeLa Cells, OVCAR-8 Cells

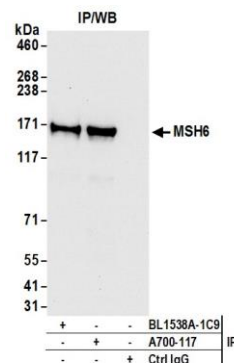
ADDITIONAL INFO <https://www.bethyl.com/product/A700-117-T>

Use the link above to view SDS, a current list of citations, and other product specific information.

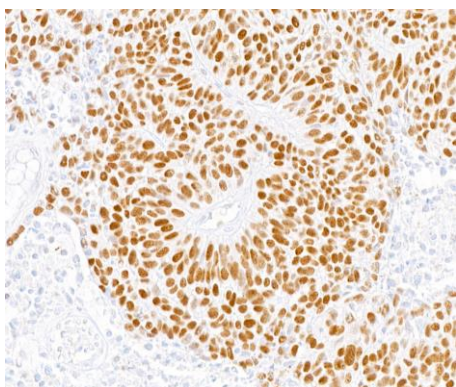
This document certifies that this product has met all of the quality control standards defined by Bethyl Laboratories, Inc.
Eric McIntush, PhD | Chief Scientific Officer Date: July 23, 2020



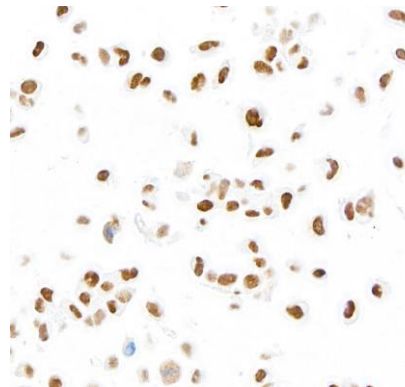
Detection of human MSH6 by western blot. *Samples:* Whole cell lysate (10 μ g) from MOLT-4, GaMG, A-549, MCF-7, HeLa, RKO, and HEK293T cells prepared using NETN lysis buffer. *Antibody:* Rabbit anti-MSH6 recombinant monoclonal antibody [BLR117H] (A700-117-T Lot 1) used at 1:1000. *Secondary:* HRP-conjugated goat anti-rabbit IgG (A120-101P). Chemiluminescence with an exposure time of 10 seconds.



Detection of human MSH6 by western blot of immunoprecipitates. *Samples:* Whole cell lysate (1.0 mg per IP reaction; 20% of IP loaded) from HEK293T cells prepared using NETN lysis buffer. *Antibodies:* Rabbit anti-MSH6 recombinant monoclonal antibody [BLR117H] (A700-117-T Lot 1) used for IP at 20 μ l/mg lysate. MSH6 was also immunoprecipitated by rabbit anti-MSH6 antibody BL1538A-1C9. For blotting immunoprecipitated MSH6, A700-117-T was used at 1:1000. Chemiluminescence with an exposure time of 10 seconds.



Detection of human MSH6 in FFPE testicular seminoma by immunohistochemistry. *Antibody:* Rabbit anti-MSH6 recombinant monoclonal antibody [BLR117H] (A700-117-T Lot 1). *Secondary:* HRP-conjugated goat anti-rabbit IgG (A120-501P). *Substrate:* DAB.



Detection of human MSH6 in FFPE OVCAR-8 cells by immunocytochemistry. *Antibody:* Rabbit anti-MSH6 recombinant monoclonal antibody [BLR117H] (A700-117-T Lot 1). *Secondary:* HRP-conjugated goat anti-rabbit IgG (A120-501P). *Substrate:* DAB.