

# AHR Recombinant Monoclonal Antibody [BLR118H]

Rabbit Recombinant Monoclonal

Purified Protein ID NP\_001612.1  
Catalog No. A700-118-T GeneID 196  
Lot No. A700-118-T-1



**APPLICATIONS** WB, IP, IHC, ICC  
**SPECIES REACTIVITY** Human  
**AMOUNT** 10 µl (5+ tests)  
**CONCENTRATION** 100 µg/ml  
**STORAGE/SHELF LIFE** 2 – 8° C / 1 year from date of receipt  
**PHYSICAL STATE** Liquid  
**BUFFER** Borate Buffered Saline (BBS) pH 8.2 with 0.1% BSA and 0.09% Sodium Azide  
**ISOTYPE** IgG  
**CLONE #** BLR118H  
**ORIGIN** USA  
**PRODUCTION PROCEDURES** Recombinant antibody was purified from cell culture supernatant.

Immunogen was a peptide representing a region between residue 798 and the C-terminus (residue 848) of human aryl hydrocarbon receptor using the numbering given in entry NP\_001612.1 (Gene ID 196).

**APPLICATIONS** Centrifuge tube to remove product from lid. Optimal working dilutions should be determined experimentally by the investigator. Prepare working dilution immediately before use.

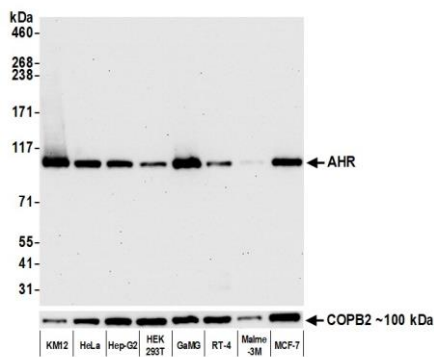
Western Blot 1:1,000  
Immunoprecipitation 20 µl/1 mg lysate  
Immunohistochemistry 1:100 to 1:500. Epitope retrieval with citrate buffer pH6.0 is recommended for FFPE tissue sections.  
Immunocytochemistry 1:100 to 1:500. Epitope retrieval with citrate buffer pH6.0 is recommended for FFPE cell sections.

**IHC HUMAN CONTROLS** Bladder Cell Carcinoma, Head and Neck Squamous Cell Carcinoma, Melanoma, Placenta, Skin Squamous Cell Carcinoma, GaMG cells, KM12 Cells, Malme-3M cells, MCF-7 Cells, RT-4 Cells, UACC-62 Cells

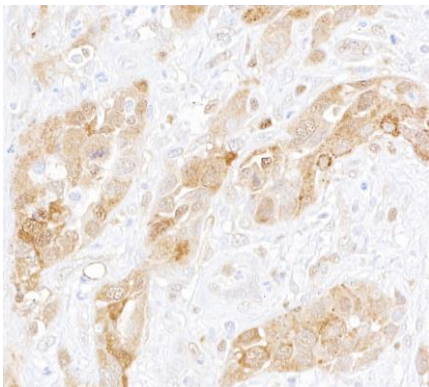
**ADDITIONAL INFO** <https://www.bethyl.com/product/A700-118-T>

Use the link above to view SDS, a current list of citations, and other product specific information.

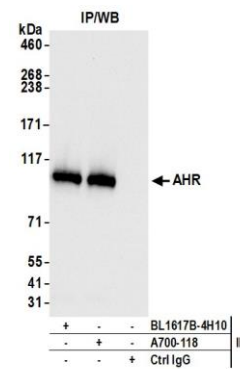
This document certifies that this product has met all of the quality control standards defined by Bethyl Laboratories, Inc.  
Eric McIntush, PhD | Chief Scientific Officer Date: July 28, 2020



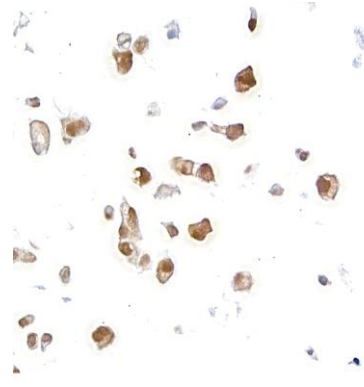
**Detection of human AHR by western blot.** *Samples:* Whole cell lysate (50 µg) from KM12, HeLa, Hep-G2, HEK293T, GaMG, RT-4, Malme-3M, and MCF-7 cells prepared using NETN lysis buffer. *Antibody:* Rabbit anti-AHR recombinant monoclonal antibody [BLR118H] (A700-118-T Lot 1) used at 1:1000. *Secondary:* HRP-conjugated goat anti-rabbit IgG (A120-101P). Chemiluminescence with an exposure time of 30 seconds. Lower Panel: Rabbit anti-COPB2 antibody (A304-523A).



**Detection of human AHR in FFPE bladder carcinoma by immunohistochemistry.** *Antibody:* Rabbit anti-AHR recombinant monoclonal antibody [BLR118H] (A700-118-T Lot 1). *Secondary:* HRP-conjugated goat anti-rabbit IgG (A120-501P). *Substrate:* DAB.



**Detection of human AHR by western blot of immunoprecipitates.** *Samples:* Whole cell lysate (1.0 mg per IP reaction; 20% of IP loaded) from KM12 cells prepared using NETN lysis buffer. *Antibodies:* Rabbit anti-AHR recombinant monoclonal antibody [BLR118H] (A700-118-T Lot 1) used for IP at 20 µl/mg lysate. AHR was also immunoprecipitated by rabbit anti-AHR antibody BL1617B-4H10. For blotting immunoprecipitated AHR, A700-118-T was used at 1:1000. Chemiluminescence with an exposure time of 3 seconds.



**Detection of human AHR in FFPE GaMG cells by immunocytochemistry.** *Antibody:* Rabbit anti-AHR recombinant monoclonal antibody [BLR118H] (A700-118-T Lot 1). *Secondary:* HRP-conjugated goat anti-rabbit IgG (A120-501P). *Substrate:* DAB.