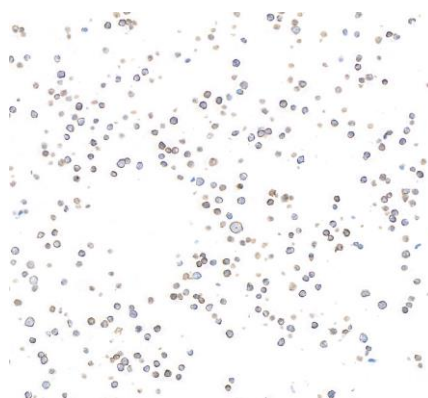


Detection of human CD19 by western blot. *Samples:* Whole cell lysate (10 μ g) from Ramos, HeLa, HEK293T, Raji, Hep-G2, MCF-7, Jurkat, and Daudi cells prepared using NETN lysis buffer. *Antibody:* Rabbit anti-CD19 recombinant monoclonal antibody [BLR137H] (A700-137-T Lot 1) used at 1:1000. *Secondary:* HRP-conjugated goat anti-rabbit IgG (A120-101P). Chemiluminescence with an exposure time of 30 seconds. Lower Panel: Rabbit anti-COPB2 antibody (A304-523A).

Detection of human CD19 in FFPE tonsil by immunohistochemistry. *Antibody:* Rabbit anti-CD19 recombinant monoclonal antibody [BLR137H] (A700-137-T Lot 1). *Secondary:* HRP-conjugated goat anti-rabbit IgG (A120-501P). *Substrate:* DAB.



Detection of human CD19 in FFPE Raji cells by immunocytochemistry. *Antibody:* Rabbit anti-CD19 recombinant monoclonal antibody [BLR137H] (A700-137-T Lot 1). *Secondary:* HRP-conjugated goat anti-rabbit IgG (A120-501P). *Substrate:* DAB.