

# 4-1BBL/CD137L/TNFSF9 Recombinant Monoclonal Antibody [BLR148J]

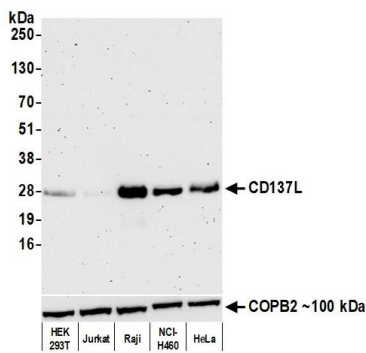
Rabbit Recombinant Monoclonal

Purified		RefSeq ID	NP_003802.1
Catalog No.	A700-148-T	Uniprot ID	P41273
Lot No.	A700-148-T-1	GeneID	8744

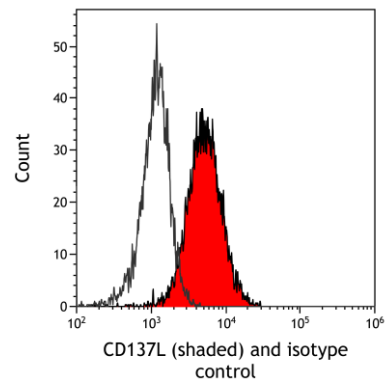
---

<b>APPLICATIONS</b>	WB, Flow Cyt
<b>SPECIES REACTIVITY</b>	Human
<b>AMOUNT</b>	20 µl (2 blots)
<b>CONCENTRATION</b>	1000 µg/ml
<b>STORAGE/SHELF LIFE</b>	2 – 8°C / 1 year from date of receipt
<b>PHYSICAL STATE</b>	Liquid
<b>BUFFER</b>	Phosphate Buffered Saline (PBS) containing 0.09% Sodium Azide
<b>ISOTYPE</b>	IgG
<b>CLONE #</b>	BLR148J
<b>ORIGIN</b>	USA
<b>PRODUCTION PROCEDURES</b>	Recombinant antibody was purified from cell culture supernatant.  Immunogen was a recombinant protein representing the extracellular domain of human Tumor necrosis factor ligand superfamily member 9 (TNFSF9, aka 4-1BBL, CD137L; residues 71-254, NP_003802.1).
<b>APPLICATIONS</b>	Centrifuge tube to remove product from lid. Optimal working dilutions should be determined experimentally by the investigator. Prepare working dilution immediately before use.  Western Blot                      1:1,000  Flow Cytometry                      Live cells. 0.5 µl per 1 x 10 <sup>6</sup> cells.
<b>ADDITIONAL INFO</b>	<a href="https://www.fortislife.com/p/A700-148-T">https://www.fortislife.com/p/A700-148-T</a> Use the link above to view SDS, a current list of citations, and other product specific information.

This document certifies that this product has met all of the quality control standards defined by Bethyl Laboratories, Inc.  
Michael Spencer, PhD Date: November 15, 2022



**Detection of human 4-1BBL/CD137L/TNFSF9 by western blot.** *Samples:* Whole cell lysate (25  $\mu$ g) from HEK293T, Jurkat, Raji, NCI-H460, and HeLa cells prepared using NETN lysis buffer. *Antibody:* Rabbit anti-4-1BBL/CD137L/TNFSF9 recombinant monoclonal antibody [BLR148J] (A700-148-T lot 1) used at 1:1000. *Secondary:* HRP-conjugated goat anti-rabbit IgG (A120-101P). Chemiluminescence with an exposure time of 3 minutes. Lower Panel: Rabbit anti-COPB2 antibody (A304-523A).



**Detection of human CD137L (shaded) in Daudi cells by flow cytometry.** *Antibody:* Rabbit anti-4-1BBL/CD137L/TNFSF9 recombinant monoclonal [BLR148J] (A700-148) or isotype control (unshaded). *Secondary:* DyLight<sup>®</sup> 488-conjugated goat anti-rabbit IgG (A120-101D2).