

# NCAM-1 /CD56 Recombinant Monoclonal Antibody [BLR152J]

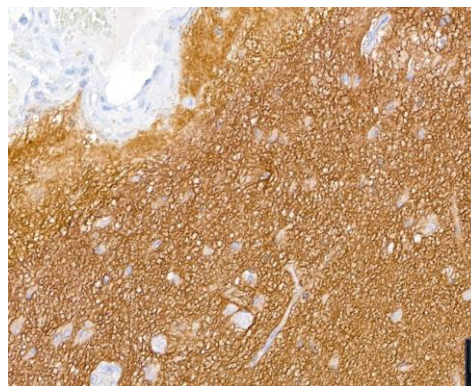
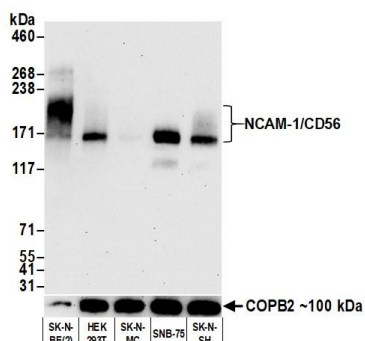
Rabbit Recombinant Monoclonal

Purified Protein ID NP\_000606.3  
Catalog No. A700-152 GeneID 4684  
Lot No. A700-152-1



<b>APPLICATIONS</b>	WB, IHC, ICC
<b>SPECIES REACTIVITY</b>	Human
<b>AMOUNT</b>	100 µl (50+ tests)
<b>CONCENTRATION</b>	100 µg/ml
<b>STORAGE/SHELF LIFE</b>	2 – 8° C / 1 year from date of receipt
<b>PHYSICAL STATE</b>	Liquid
<b>BUFFER</b>	Phosphate Buffered Saline (PBS) containing 0.2% BSA and 0.09% Sodium Azide
<b>ISOTYPE</b>	IgG
<b>CLONE #</b>	BLR152J
<b>ORIGIN</b>	USA
<b>PRODUCTION PROCEDURES</b>	Recombinant antibody was purified from cell culture supernatant.  Immunogen was a recombinant protein representing the extracellular domain of human Neural cell adhesion molecule 1 (NCAM1, aka CD56, residues 20–318, NP_000606.3).
<b>APPLICATIONS</b>	Centrifuge tube to remove product from lid. Optimal working dilutions should be determined experimentally by the investigator. Prepare working dilution immediately before use.  Western Blot 1:1,000  Immunohistochemistry 1:100 to 1:500. Epitope retrieval with citrate buffer pH6.0 is recommended for FFPE tissue sections.  Immunocytochemistry 1:100 to 1:500. Epitope retrieval with citrate buffer pH6.0 is recommended for FFPE cell sections.
<b>IHC HUMAN CONTROLS</b>	Glioblastoma, Small Cell Lung Cancer, Tonsil, OVCAR-3 Cells, RPMI-8226 Cells, SK-N-BE (2) Cells, SNB-75 cells
<b>ADDITIONAL INFO</b>	<a href="https://www.bethyl.com/product/A700-152">https://www.bethyl.com/product/A700-152</a> Use the link above to view SDS, a current list of citations, and other product specific information.

This document certifies that this product has met all of the quality control standards defined by Bethyl Laboratories, Inc.  
Brian McWilliams, PhD Date: March 29, 2021

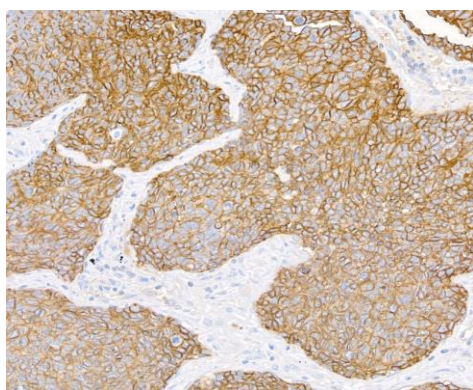


**Detection of human NCAM-1/CD56 by western blot.**

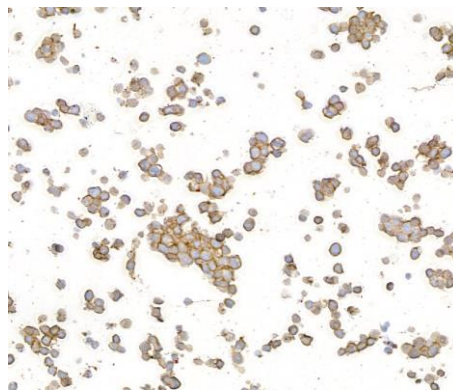
*Samples:* Whole cell lysate from SK-N-BE(2), HEK293T, SK-N-MC, SNB-75, and SK-N-SH cells prepared using NETN lysis buffer. *Antibody:* Rabbit anti-NCAM-1/CD56 recombinant monoclonal antibody [BLR152J] (A700-152 lot 1) used at 1:1000. *Secondary:* HRP-conjugated goat anti-rabbit IgG (A120-101P). Chemiluminescence with an exposure time of 30 seconds. Lower Panel: Rabbit anti-COPB2 antibody (A304-523A).

**Detection of human NCAM-1/CD56 in FFPE glioblastoma by immunohistochemistry.**

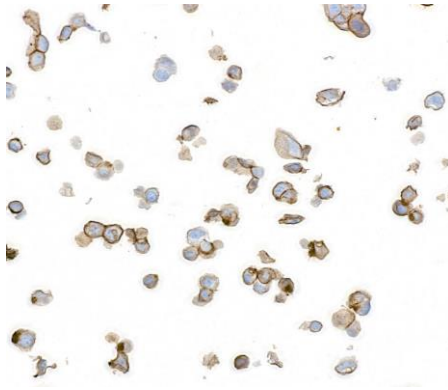
*Antibody:* Rabbit anti-NCAM-1/CD56 recombinant monoclonal antibody [BLR152J] (A700-152 lot 1). *Secondary:* HRP-conjugated goat anti-rabbit IgG (A120-501P). *Substrate:* DAB.



**Detection of human NCAM-1/CD56 in FFPE lung carcinoma by immunohistochemistry.** *Antibody:* Rabbit anti-NCAM-1/CD56 recombinant monoclonal antibody [BLR152J] (A700-152 lot 1). *Secondary:* HRP-conjugated goat anti-rabbit IgG (A120-501P). *Substrate:* DAB.



**Detection of human NCAM-1/CD56 in FFPE SK-N-BE(2) cells by immunocytochemistry.** *Antibody:* Rabbit anti-NCAM-1/CD56 recombinant monoclonal antibody [BLR152J] (A700-152 lot 1). *Secondary:* HRP-conjugated goat anti-rabbit IgG (A120-501P). *Substrate:* DAB.



**Detection of human NCAM-1/CD56 in FFPE Ovar3 cells by immunocytochemistry.** *Antibody:* Rabbit anti-NCAM-1/CD56 recombinant monoclonal antibody [BLR152J] (A700-152 lot 1). *Secondary:* HRP-conjugated goat anti-rabbit IgG (A120-501P). *Substrate:* DAB.