

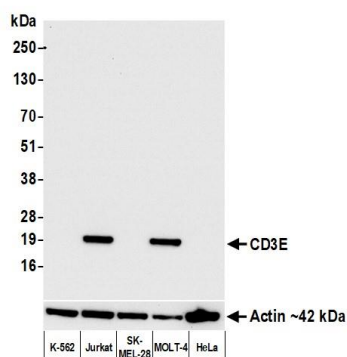
CD3E Monoclonal Antibody [BLR174J]

Rabbit Recombinant Monoclonal

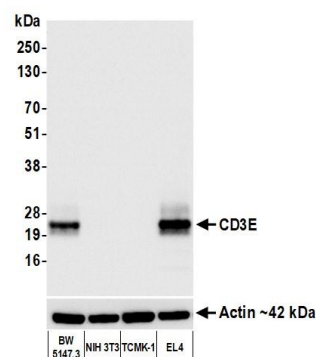
Purified	Protein ID	NP_031674.1
Catalog No. A700-174-T	GeneID	12501
Lot No. A700-174-T-1		

APPLICATIONS	WB, IP, IHC, ICC, F										
SPECIES REACTIVITY	Human, Mouse										
AMOUNT	10 µl (5+ tests)										
CONCENTRATION	500 µg/ml										
STORAGE/SHELF LIFE	2 – 8° C / 1 year from date of receipt										
PHYSICAL STATE	Liquid										
BUFFER	Borate Buffered Saline (BBS) pH 8.2 with 0.1% BSA and 0.09% Sodium Azide										
ISOTYPE	IgG										
CLONE #	BLR174J										
ORIGIN	USA										
PRODUCTION PROCEDURES	<p>Recombinant antibody was purified from cell culture supernatant.</p> <p>Immunogen was a peptide representing a region between residue 139 and the C-terminus (residue 189) of mouse T-cell surface glycoprotein CD3 epsilon using the numbering given in entry NP_031674.1 (Gene ID 12501).</p>										
APPLICATIONS	<p>Centrifuge tube to remove product from lid. Optimal working dilutions should be determined experimentally by the investigator. Prepare working dilution immediately before use.</p> <table><tr><td>Western Blot</td><td>1:1,000</td></tr><tr><td>Immunoprecipitation</td><td>12 µl/1 mg lysate</td></tr><tr><td>Immunohistochemistry</td><td>1:100 to 1:500. Epitope retrieval with citrate buffer pH6.0 is recommended for FFPE tissue sections.</td></tr><tr><td>Immunocytochemistry</td><td>1:100 to 1:500. Epitope retrieval with citrate buffer pH6.0 is recommended for FFPE cell sections.</td></tr><tr><td>Flow Cytometry</td><td>Fixed in 4% formaldehyde and permeabilized with 90% methanol. 1 µl per 1 x 10⁶ cells.</td></tr></table>	Western Blot	1:1,000	Immunoprecipitation	12 µl/1 mg lysate	Immunohistochemistry	1:100 to 1:500. Epitope retrieval with citrate buffer pH6.0 is recommended for FFPE tissue sections.	Immunocytochemistry	1:100 to 1:500. Epitope retrieval with citrate buffer pH6.0 is recommended for FFPE cell sections.	Flow Cytometry	Fixed in 4% formaldehyde and permeabilized with 90% methanol. 1 µl per 1 x 10 ⁶ cells.
Western Blot	1:1,000										
Immunoprecipitation	12 µl/1 mg lysate										
Immunohistochemistry	1:100 to 1:500. Epitope retrieval with citrate buffer pH6.0 is recommended for FFPE tissue sections.										
Immunocytochemistry	1:100 to 1:500. Epitope retrieval with citrate buffer pH6.0 is recommended for FFPE cell sections.										
Flow Cytometry	Fixed in 4% formaldehyde and permeabilized with 90% methanol. 1 µl per 1 x 10 ⁶ cells.										
IHC HUMAN CONTROLS	Breast Carcinoma, Skin Squamous Cell Carcinoma, Spleen, Tonsil, Jurkat Cells, MOLT-4 Cells										
IHC MOUSE CONTROLS	Spleen, Thymus, CTLL-2 Cells										
ADDITIONAL INFO	<p>https://www.bethyl.com/product/A700-174-T</p> <p>Use the link above to view SDS, a current list of citations, and other product specific information.</p>										

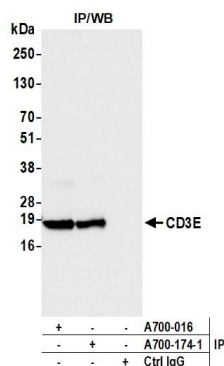
This document certifies that this product has met all of the quality control standards defined by Bethyl Laboratories, Inc.
Michael Spencer, PhD Date: September 21, 2021



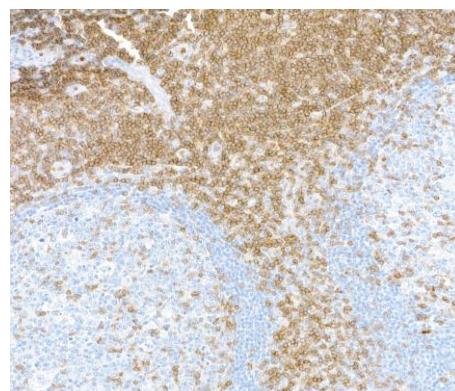
Detection of human CD3E by western blot. *Samples:* Whole cell lysate (10 µg) from K-562, Jurkat, SK-MEL-28, MOLT-4, and HeLa cells prepared using NETN lysis buffer. *Antibody:* Rabbit anti-CD3E recombinant monoclonal antibody [BLR174J] (A700-174-T lot 1) used at 1:1000. *Secondary:* HRP-conjugated goat anti-rabbit IgG (A120-101P). Chemiluminescence with an exposure time of 3 seconds. Lower Panel: Rabbit anti-Actin recombinant monoclonal antibody [BLR057F] (A700-057).



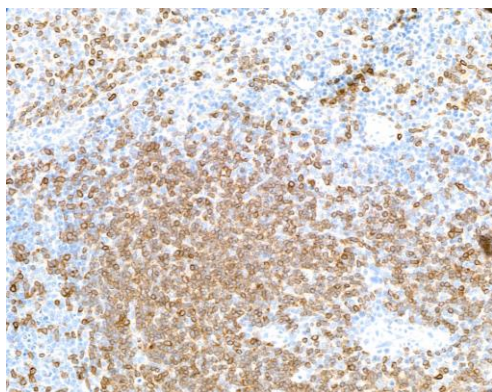
Detection of mouse CD3E by western blot. *Samples:* Whole cell lysate (10 µg) from BW5147.3, NIH 3T3, TCMK-1, and EL4 cells prepared using NETN lysis buffer. *Antibody:* Rabbit anti-CD3E recombinant monoclonal antibody [BLR174J] (A700-174-T lot 1) used at 1:1000. *Secondary:* HRP-conjugated goat anti-rabbit IgG (A120-101P). Chemiluminescence with an exposure time of 1 second. Lower Panel: Rabbit anti-Actin recombinant monoclonal antibody [BLR057F] (A700-057).



Detection of human CD3E by western blot of immunoprecipitates. *Samples:* Whole cell lysate (1.0 mg per IP reaction; 20% of IP loaded) from Jurkat cells prepared using NETN lysis buffer. *Antibodies:* Rabbit anti-CD3E recombinant monoclonal antibody [BLR174J] (A700-174-T lot 1) used for IP at 12 µl/mg lysate. CD3E was also immunoprecipitated by a second antibody against a different epitope of CD3E (A700-016). For blotting immunoprecipitated CD3E, A700-174-T was used at 1:1000. Chemiluminescence with an exposure time of 1 second.



Detection of human CD3E in FFPE tonsil by IHC. *Antibody:* Rabbit anti-CD3E recombinant monoclonal antibody [BLR174J] (A700-174-T lot 1). *Secondary:* HRP-conjugated goat anti-rabbit IgG (A120-501P). *Substrate:* DAB.



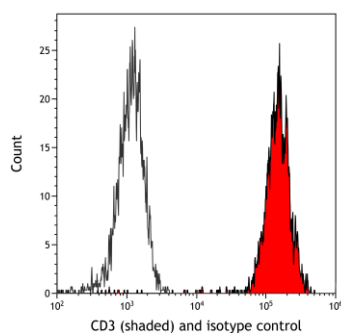
Detection of mouse CD3E in FFPE mouse spleen by IHC. *Antibody:* Rabbit anti-CD3E recombinant monoclonal antibody [BLR174J] (A700-174-T lot 1). *Secondary:* HRP-conjugated goat anti-rabbit IgG (A120-501P). *Substrate:* DAB.



Detection of human CD3E in FFPE MOLT-4 cells by ICC. *Antibody:* Rabbit anti-CD3E recombinant monoclonal antibody [BLR174J] (A700-174-T lot 1). *Secondary:* HRP-conjugated goat anti-rabbit IgG (A120-501P). *Substrate:* DAB.



Detection of mouse CD3E in FFPE mouse CTLL-2 cells by ICC. *Antibody:* Rabbit anti-CD3E recombinant monoclonal antibody [BLR174J] (A700-174-T lot 1). *Secondary:* HRP-conjugated goat anti-rabbit IgG (A120-501P). *Substrate:* DAB.



Detection of human CD3 (shaded) in Jurkat cells by flow cytometry. *Antibody:* Rabbit anti-CD3E recombinant monoclonal antibody [BLR174J] (A700-174-T lot 1) or isotype control (unshaded). *Secondary:* DyLight® 488-conjugated goat anti-rabbit IgG (A120-101D2).