

CD3E Monoclonal Antibody [BLR175J]

Rabbit Recombinant Monoclonal

Purified	Protein ID	NP_031674.1
Catalog No. A700-175	GeneID	12501
Lot No. A700-175-1		

APPLICATIONS WB, IP, IHC, ICC, F

SPECIES REACTIVITY Mouse

AMOUNT 100 µl (50+ tests)

CONCENTRATION 500 µg/ml

STORAGE/SHELF LIFE 2 – 8° C / 1 year from date of receipt

PHYSICAL STATE Liquid

BUFFER Borate Buffered Saline (BBS) pH 8.2 with 0.1% BSA and 0.09% Sodium Azide

ISOTYPE IgG

CLONE # BLR175J

ORIGIN USA

PRODUCTION PROCEDURES Recombinant antibody was purified from cell culture supernatant.

Immunogen was a peptide representing a region between residue 139 and the C-terminus (residue 189) of mouse T-cell surface glycoprotein CD3 epsilon using the numbering given in entry NP_031674.1 (Gene ID 12501).

APPLICATIONS Centrifuge tube to remove product from lid. Optimal working dilutions should be determined experimentally by the investigator. Prepare working dilution immediately before use.

Western Blot 1:1,000

Immunoprecipitation 12 µl/1 mg lysate

Immunohistochemistry 1:100 to 1:500. Epitope retrieval with citrate buffer pH6.0 is recommended for FFPE tissue sections.

Immunocytochemistry 1:100 to 1:500. Epitope retrieval with citrate buffer pH6.0 is recommended for FFPE cell sections.

Flow Cytometry Fixed in 4% formaldehyde and permeabilized with 90% methanol. 1 µl per 1×10^6 cells.

IHC MOUSE CONTROLS Bone Marrow, Gut, Spleen, Thymus, CTLL-2 Cells

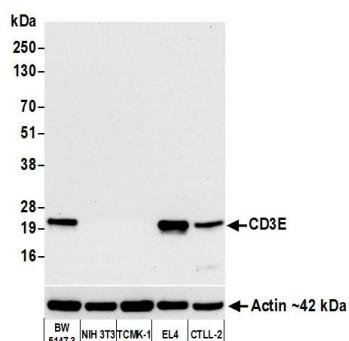
ADDITIONAL INFO <https://www.bethyl.com/product/A700-175>

Use the link above to view SDS, a current list of citations, and other product specific information.

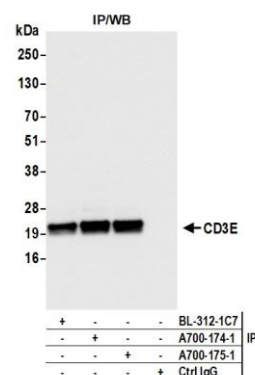
This document certifies that this product has met all of the quality control standards defined by Bethyl Laboratories, Inc.

Michael Spencer, PhD

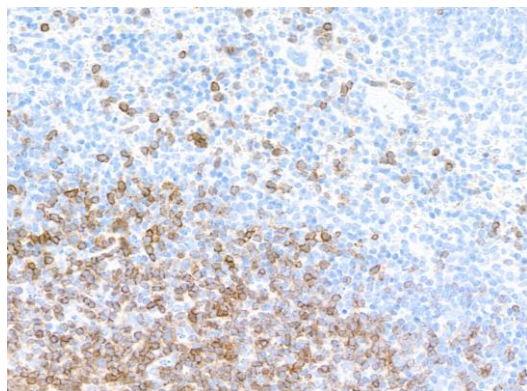
Date: September 21, 2021



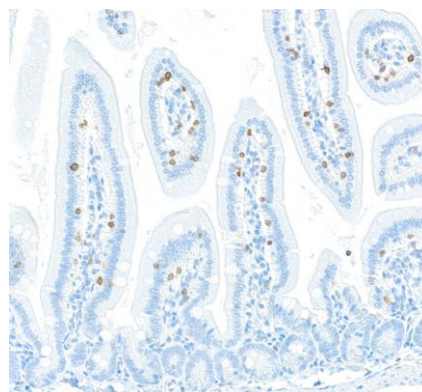
Detection of mouse CD3E by western blot. *Samples:* Whole cell lysate (10 µg) from BW5147.3, NIH 3T3, TCMK-1, EL4, and CTLL-2 cells prepared using NETN lysis buffer. ***Antibody:*** Rabbit anti-CD3E recombinant monoclonal antibody [BLR175J] (A700-175 lot 1) used at 1:1000. ***Secondary:*** HRP-conjugated goat anti-rabbit IgG (A120-101P). Chemiluminescence with an exposure time of 10 seconds.



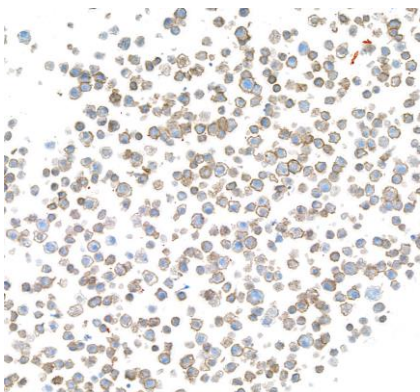
Detection of mouse CD3E by western blot of immunoprecipitates. *Samples:* Whole cell lysate (1.0 mg per IP reaction; 20% of IP loaded) from BW5147.3 cells prepared using NETN lysis buffer. ***Antibodies:*** Rabbit anti-CD3E recombinant monoclonal antibody [BLR175J] (A700-175 lot 1) used for IP at 12 µl/mg lysate. CD3E was also immunoprecipitated by two antibodies against different epitopes of CD3E (A700-174 and BL-312-1C7). For blotting immunoprecipitated CD3E, A700-175 was used at 1:1000. Chemiluminescence with an exposure time of 1 second.



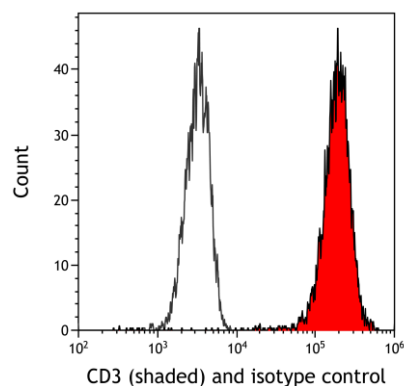
Detection of mouse CD3E in FFPE mouse spleen by IHC. *Antibody:* Rabbit anti-CD3E recombinant monoclonal antibody [BLR175J] (A700-175 lot 1). ***Secondary:*** HRP-conjugated goat anti-rabbit IgG (A120-501P). ***Substrate:*** DAB.



Detection of mouse CD3E in FFPE mouse gut by IHC. *Antibody:* Rabbit anti-CD3E recombinant monoclonal antibody [BLR175J] (A700-175 lot 1). ***Secondary:*** HRP-conjugated goat anti-rabbit IgG (A120-501P). ***Substrate:*** DAB.



Detection of mouse CD3E in FFPE mouse CTLL-2 cells by ICC. *Antibody:* Rabbit anti-CD3E recombinant monoclonal antibody [BLR175J] (A700-175 lot 1). *Secondary:* HRP-conjugated goat anti-rabbit IgG (A120-501P). *Substrate:* DAB.



Detection of mouse CD3 (shaded) in EL4 cells by flow cytometry. *Antibody:* Rabbit anti-CD3E recombinant monoclonal antibody [BLR175J] (A700-175 lot 1) or isotype control (unshaded). *Secondary:* DyLight® 488-conjugated goat anti-rabbit IgG (A120-101D2).