

CD19 Recombinant Monoclonal Antibody [BLR208K]

Rabbit Recombinant Monoclonal

Purified	Protein ID	NP_033974.2
Catalog No. A700-208	GeneID	12478
Lot No. A700-208-1		

APPLICATIONS	WB, IP, IHC, ICC
SPECIES REACTIVITY	Mouse
AMOUNT	100 µl (50+ tests)
CONCENTRATION	1000 µg/ml
STORAGE/SHELF LIFE	2 – 8°C / 1 year from date of receipt
PHYSICAL STATE	Liquid
BUFFER	Borate Buffered Saline (BBS) pH 8.2 with 0.09% Sodium Azide, BSA Free
ISOTYPE	IgG
CLONE #	BLR208K
ORIGIN	USA

PRODUCTION PROCEDURES Recombinant antibody was purified from cell culture supernatant.

Immunogen was a recombinant protein representing the extracellular domain of mouse B-lymphocyte antigen CD19 (residues 19–287, NP_033974.2).

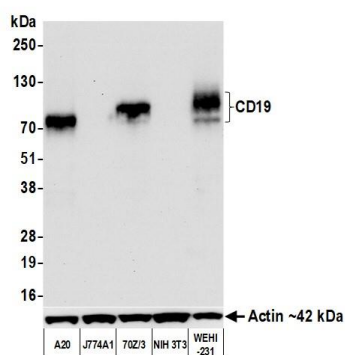
APPLICATIONS Centrifuge tube to remove product from lid. Optimal working dilutions should be determined experimentally by the investigator. Prepare working dilution immediately before use.

Western Blot	1:1,000
Immunoprecipitation	6 µl/1 mg lysate
Immunohistochemistry	1:100 to 1:500. Epitope retrieval with citrate buffer pH6.0 is recommended for FFPE tissue sections.
Immunocytochemistry	1:100 to 1:500. Epitope retrieval with citrate buffer pH6.0 is recommended for FFPE cell sections.

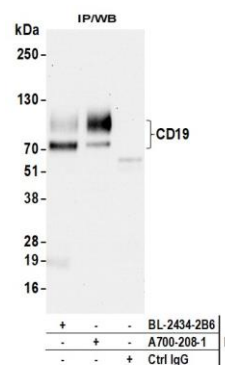
IHC MOUSE CONTROLS Bone Marrow, Spleen, 7OZ/3 Cells, A20 Cells, CH27 Cells, WEHI-231 Cells

ADDITIONAL INFO <https://www.bethyl.com/product/A700-208>
Use the link above to view SDS, a current list of citations, and other product specific information.

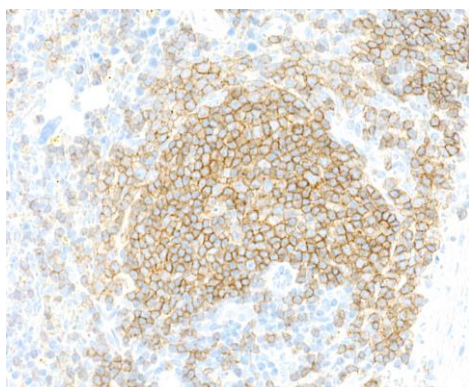
This document certifies that this product has met all of the quality control standards defined by Bethyl Laboratories, Inc.
Michael Spencer, PhD Date: April 4, 2022



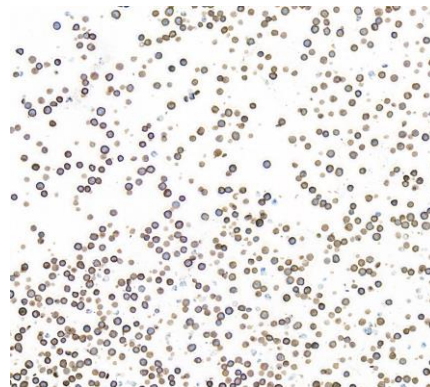
Detection of mouse CD19 by western blot. *Samples:* Whole cell lysate (25 μ g) from A20, J774A1, 70Z/3, NIH 3T3, and WEHI-231 cells prepared using NETN lysis buffer. *Antibody:* Rabbit anti-CD19 recombinant monoclonal antibody [BLR208K] (A700-208 lot 1) used at 1:1000. *Secondary:* HRP-conjugated goat anti-rabbit IgG (A120-101P). Chemiluminescence with an exposure time of 10 seconds. Lower Panel: Rabbit anti-Actin recombinant monoclonal antibody [BLR057F] (A700-057).



Detection of mouse CD19 by western blot of immunoprecipitates. *Samples:* Whole cell lysate (1.0 mg per IP reaction; 5% of IP loaded) from WEHI-231 cells prepared using NETN lysis buffer. *Antibodies:* Rabbit anti-CD19 recombinant monoclonal antibody [BLR208K] (A700-208 lot 1) used for IP at 6 μ l/mg lysate. CD19 was also immunoprecipitated by a second antibody against a different epitope of CD19 (BL-2434-2B6). For blotting immunoprecipitated CD19, A700-208 was used at 1:1000. Chemiluminescence with an exposure time of 10 seconds.



Detection of mouse CD19 by immunohistochemistry. *Sample:* FFPE section of mouse spleen. *Antibody:* Rabbit anti-mouse CD19 recombinant monoclonal antibody [BLR208J] (A700-208 Lot 1). *Secondary:* HRP-conjugated goat anti-rabbit IgG (A120-501P).



Detection of mouse CD19 by immunocytochemistry. *Sample:* FFPE section of WEHI-231 cells. *Antibody:* Rabbit anti-mouse CD19 recombinant monoclonal antibody [BLR208J] (A700-208 Lot 1). *Secondary:* HRP-conjugated goat anti-rabbit IgG (A120-501P).