

# SMARCA2/BRM Recombinant Monoclonal Antibody [BLR301M]

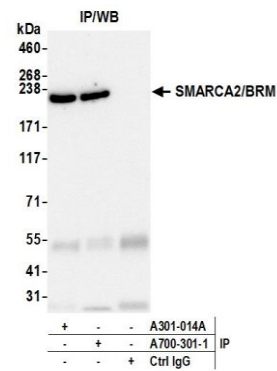
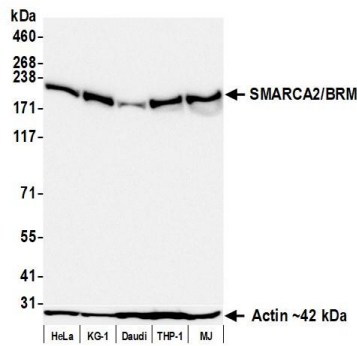
Rabbit Recombinant Monoclonal

Purified		RefSeq ID	NP_003061.3
Catalog No.	A700-301	Uniprot ID	P51531
Lot No.	1	GeneID	6595

---

<b>APPLICATIONS</b>	WB, IP, Flow Cyt
<b>SPECIES REACTIVITY</b>	Human
<b>AMOUNT</b>	100 µl (50+ tests)
<b>CONCENTRATION</b>	250 µg/ml
<b>STORAGE/SHELF LIFE</b>	2 – 8°C / 1 year from date of receipt
<b>PHYSICAL STATE</b>	Liquid
<b>BUFFER</b>	Phosphate Buffered Saline (PBS) with 0.1% BSA and 0.09% Sodium Azide
<b>ISOTYPE</b>	IgG
<b>CLONE #</b>	BLR301M
<b>ORIGIN</b>	USA
<b>PRODUCTION PROCEDURES</b>	Recombinant antibody was purified from cell culture supernatant.  Immunogen was a peptide representing a region between residue 1325 and 1375 of human SMARCA2/BRM using the numbering given in entry NP_003061.3 (Gene ID 6595).
<b>APPLICATIONS</b>	Centrifuge tube to remove product from lid. Optimal working dilutions should be determined experimentally by the investigator. Prepare working dilution immediately before use.  Western Blot                      1:1000 Immunoprecipitation          20 µl/mg lysate Flow Cytometry                Fixed in 4% formaldehyde and permeabilized with 90% methanol. 1 µl per 1 × 10 <sup>6</sup> cells.
<b>APPLICATION NOTES</b>	All western blot analysis is performed using 5% Milk-TBST for blocking and as antibody diluent. Primary antibody is incubated overnight.  Western blots of cell lysates are performed using Goat anti-Rabbit IgG Heavy and Light Chain Antibody (Cat. No. A120-101P).  Western blots of immunoprecipitates are performed using Goat anti-Rabbit Light Chain HRP Conjugate (Cat. No. A120-113P) with 5% Normal Pig Serum (Cat. No. S100-020) added to the blocking buffer.
<b>ADDITIONAL INFO</b>	<a href="https://www.fortislife.com/p/A700-301">https://www.fortislife.com/p/A700-301</a> Use the link above to view SDS, a current list of citations, and other product specific information.

This document certifies that this product has met all of the quality control standards defined by Bethyl Laboratories, Inc.  
Michael Spencer, PhD Date: December 26, 2023

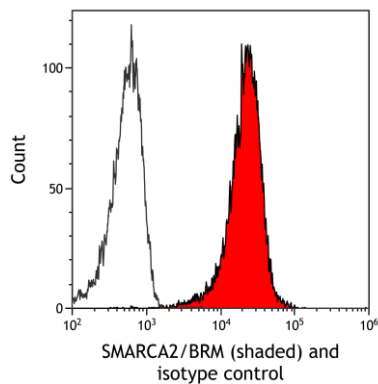


**Detection of human SMARCA2/BRM by western blot.**

*Samples:* Whole cell lysate (50 µg) from HeLa, KG-1, Daudi, THP-1, and MJ cells prepared using NETN lysis buffer. *Antibody:* Rabbit anti-SMARCA2/BRM recombinant monoclonal antibody [BLR301M] (A700-301 lot 1) used at 1:1000. *Secondary:* HRP-conjugated goat anti-rabbit IgG (A120-101P). *Detection:* Chemiluminescence with an exposure time of 10 seconds. Lower Panel: Rabbit anti-Actin recombinant monoclonal antibody [BLR057F] (A700-057).

**Detection of human SMARCA2/BRM by western blot of immunoprecipitates.**

*Samples:* Whole cell lysate (1.0 mg per IP reaction; 20% of IP loaded) from HeLa cells prepared using NETN lysis buffer. *Antibodies:* Rabbit anti-SMARCA2/BRM recombinant monoclonal antibody [BLR301M] (A700-301 lot 1) used for IP at 20 µl/mg lysate. SMARCA2/BRM was also immunoprecipitated by a second antibody against a different epitope of SMARCA2/BRM (A301-014A). For blotting immunoprecipitated SMARCA2/BRM, A700-301 was used at 1:1000. *Detection:* Chemiluminescence with an exposure time of 30 seconds.



**Detection of human SMARCA2/BRM (shaded) in HeLa cells by flow cytometry.**

*Antibody:* Rabbit anti-SMARCA2/BRM recombinant monoclonal antibody [BLR301M] (A700-301) or isotype control (unshaded). *Secondary:* DyLight® 650-conjugated goat anti-rabbit IgG (A120-101D5).