

# Human IgM–Fc Fragment Antibody

Goat Polyclonal

Antigen Affinity Purified

Catalog No. A80–100A

Lot No. 14

---

<b>APPLICATIONS</b>	WB, IHC, ICC, ELISA
<b>SPECIES REACTIVITY</b>	Human
<b>AMOUNT</b>	1 ml
<b>CONCENTRATION</b>	1 mg/ml
<b>STORAGE/SHELF LIFE</b>	2 – 8°C / 2 years from date of receipt
<b>PHYSICAL STATE</b>	Liquid
<b>BUFFER</b>	Phosphate Buffered Saline (PBS) containing 0.09% Sodium Azide
<b>ISOTYPE</b>	IgG
<b>ORIGIN</b>	USA
<b>PRODUCTION PROCEDURES</b>	Antiserum was solid phase adsorbed to ensure class specificity. The antibody was isolated by affinity chromatography using antigen coupled to agarose beads.

Immunoglobulin concentration was determined using Beer's Law where 1mg/mL IgG has an A280 of 1.4.

By immunoelectrophoresis and ELISA this antibody reacts specifically with human IgM. Cross reactivity with other immunoglobulins and light chains is less than 1%. This antibody may cross react with IgM from other species.

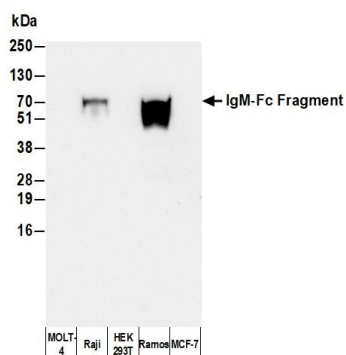
**APPLICATIONS** Centrifuge tube to remove product from lid. Optimal working dilutions should be determined experimentally by the investigator. Prepare working dilution immediately before use.

Western Blot	1:1000 – 1:30,000
Immunohistochemistry	1:200 – 1:2000
Immunocytochemistry	1:200 – 1:2000
ELISA	1:1000 – 1:30,000; for coating plates 1:100 – 1:500

**APPLICATION NOTES** Not all listed applications have been specifically tested by our laboratory.

**ADDITIONAL INFO** <https://www.fortislife.com/p/A80-100A>  
Use the link above to view SDS, a current list of citations, and other product specific information.

This document certifies that this product has met all of the quality control standards defined by Bethyl Laboratories, Inc.  
Michael Spencer, PhD Date: February 6, 2024

**Detection of human IgM-Fc Fragment by western blot.**

*Samples:* Whole cell lysate (50 µg) from MOLT-4, Raji, HEK293T, Ramos, and MCF-7 cells prepared using NETN lysis buffer. *Antibody:* Affinity Purified Goat anti-Human IgM-Fc Fragment Antibody (A80-100A) used for WB at 0.1 µg/ml. *Secondary:* HRP-conjugated Goat anti-Rabbit IgG Heavy and Light Chain Cross-Adsorbed Antibody (A120-201P). *Detection:* Chemiluminescence with an exposure time of 3 seconds.