

Human Apo E Antibody

Goat Polyclonal	Conjugate	Biotin
Antigen Affinity Purified	RefSeq ID	NP_000032.1
Catalog No. A81-118B	Uniprot ID	P02649
Lot No. 1	GenID	348

APPLICATIONS	ELISA
SPECIES REACTIVITY	Human
AMOUNT	0.5 mg
CONCENTRATION	1 mg/ml
STORAGE/SHELF LIFE	2 – 8°C / 1 year from date of receipt
PHYSICAL STATE	Liquid
BUFFER	Phosphate Buffered Saline (PBS) containing 0.2% BSA and 0.09% Sodium Azide
ISOTYPE	IgG
ORIGIN	USA
PRODUCTION PROCEDURES	The antibody was isolated by affinity chromatography using antigen coupled to agarose beads and conjugated to biotin. Immunoglobulin concentration was determined using Beer's Law where 1mg/mL IgG has an A280 of 1.4.

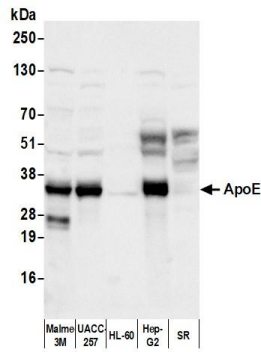
By ELISA this antibody reacts specifically with human Apo E.

APPLICATIONS Centrifuge tube to remove product from lid. Optimal working dilutions should be determined experimentally by the investigator. Prepare working dilution immediately before use.

ELISA 1:1000 – 1:8000

ADDITIONAL INFO <https://www.fortislifecom.com/p/A81-118B>
Use the link above to view SDS, a current list of citations, and other product specific information.

This document certifies that this product has met all of the quality control standards defined by Bethyl Laboratories, Inc.
Michael Spencer, PhD Date: April 5, 2024



Detection of human ApoE by western blot. *Samples:* Whole cell lysate (50 µg) from Malme-3M, UACC-257, HL-60, Hep-G2, and SR cells prepared using NETN lysis buffer. *Antibody:* Biotin-conjugated Goat anti-Human Apo E Antibody (A81-118B) used for WB at 1 µg/ml. *Secondary:* HRP-conjugated Rabbit anti-Biotin Antibody (A150-109P). *Detection:* Chemiluminescence with an exposure time of 1 second.