

# Mouse IgG1 Heavy Chain Antibody

Goat Polyclonal Conjugate HRP

Antigen Affinity Purified

Catalog No. A90-105P

Lot No. 46

---

<b>APPLICATIONS</b>	WB, IHC, ICC, ELISA
<b>SPECIES REACTIVITY</b>	Mouse
<b>AMOUNT</b>	1 ml
<b>CONCENTRATION</b>	1 mg/ml
<b>STORAGE/SHELF LIFE</b>	2 – 8°C / 1 year from date of receipt
<b>PHYSICAL STATE</b>	Liquid
<b>BUFFER</b>	Phosphate Buffered Saline (PBS) containing 0.2% BSA and 0.05% Pro-Clean 400
<b>ISOTYPE</b>	IgG
<b>ORIGIN</b>	USA
<b>PRODUCTION PROCEDURES</b>	Antiserum was solid phase adsorbed to ensure subclass specificity. The antibody was isolated by affinity chromatography using antigen coupled to agarose beads and conjugated to horseradish peroxidase (HRP).

Prior to conjugation, immunoglobulin concentration was determined using Beer's Law where 1 mg/mL IgG has an A280 of 1.4. Molar enzyme/antibody protein ratio is 4:1.

By immunoelectrophoresis and ELISA this antibody reacts specifically with mouse IgG1. Cross reactivity to mouse IgA, IgM, IgG2a, IgG2b, IgG2c, IgG3 and IgE is less than 1%. Some hybridoma clones may express aberrant immunoglobulin-related peptides that are improperly recognized by this antibody.

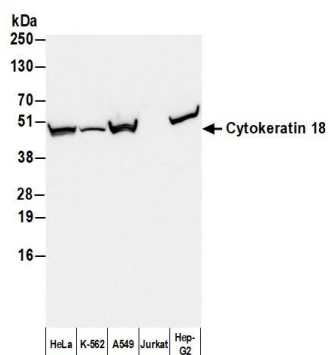
**APPLICATIONS** Centrifuge tube to remove product from lid. Optimal working dilutions should be determined experimentally by the investigator. Prepare working dilution immediately before use.

Western Blot	1:2,000 – 1:20,000
Immunohistochemistry	1:200 – 1:2,000
Immunocytochemistry	1:200 – 1:2,000
ELISA	1:10,000 – 1:100,000

**APPLICATION NOTES** Not all listed applications have been specifically tested by our laboratory.

**ADDITIONAL INFO** <https://www.fortislife.com/p/A90-105P>  
Use the link above to view SDS, a current list of citations, and other product specific information.

This document certifies that this product has met all of the quality control standards defined by Bethyl Laboratories, Inc.  
Michael Spencer, PhD Date: February 6, 2024



**Detection of human Cytokeratin 18 by western blot with HRP-conjugated Goat anti-Mouse IgG1 Heavy Chain Antibody.** *Samples:* Whole cell lysate (50 µg) from HeLa, K-562, A549, Jurkat, and Hep-G2 cells prepared using NETN lysis buffer. *Antibody:* Mouse anti-Cytokeratin 18 Monoclonal Antibody [LDK18] (A500-035A) used for WB at 1:1000. *Secondary:* HRP-conjugated Goat anti-Mouse IgG1 Heavy Chain Antibody (A90-105P). *Detection:* Chemiluminescence with an exposure time of 1 second.