

Mouse IgG2b Heavy Chain Antibody

Goat Polyclonal Conjugate Biotin
Antigen Affinity Purified
Catalog No. A90-109B
Lot No. 14

APPLICATIONS	WB, IHC, ICC, ELISA
SPECIES REACTIVITY	Mouse
AMOUNT	1 ml
CONCENTRATION	1 mg/ml
STORAGE/SHELF LIFE	2 - 8°C / 1 year from date of receipt
PHYSICAL STATE	Liquid
BUFFER	Phosphate Buffered Saline (PBS) containing 0.2% BSA and 0.09% Sodium Azide
ISOTYPE	IgG
ORIGIN	USA
PRODUCTION PROCEDURES	Antiserum was solid phase adsorbed to ensure subclass specificity. The antibody was isolated by affinity chromatography using antigen coupled to agarose beads and conjugated to biotin.

Immunoglobulin concentration was determined using Beer's Law where 1 mg/mL IgG has an A280 of 1.4.

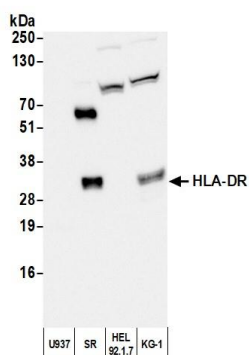
By immunoelectrophoresis and ELISA this antibody reacts specifically with mouse IgG2b. Cross reactivity to mouse IgA, IgM, IgG1, IgG2a, IgG2c, IgG3 and IgE is less than 1%. Some hybridoma clones may express aberrant immunoglobulin-related peptides that are improperly recognized by this antibody. Biotinylated antibody was demonstrated by reaction with avidin/peroxidase when coated on microtiter wells. Working dilutions should be determined by the investigator.

APPLICATIONS	Centrifuge tube to remove product from lid. Optimal working dilutions should be determined experimentally by the investigator. Prepare working dilution immediately before use.
	Western Blot 1:10,000 - 1:200,000
	Immunohistochemistry 1:250 - 1:2500
	Immunocytochemistry 1:100 - 1:500
	ELISA 1:10,000 - 1:200,000

APPLICATION NOTES Not all listed applications have been specifically tested by our laboratory.

ADDITIONAL INFO <https://www.fortislife.com/p/A90-109B>
Use the link above to view SDS, a current list of citations, and other product specific information.

This document certifies that this product has met all of the quality control standards defined by Bethyl Laboratories, Inc.
Michael Spencer, PhD Date: February 6, 2024



Detection of human HLA-DR by western blot with Biotinylated Goat anti-Mouse IgG2b Heavy Chain Antibody. *Samples:* Whole cell lysate (50 µg) from U937, SR (5ug), HEL 92.1.7, and KG-1 cells prepared using NETN lysis buffer. *Antibody:* Mouse anti-HLA-DR Monoclonal Antibody [LN3] (A500-022A) used for WB at 1:1000. *Secondary:* Biotinylated Goat anti-Mouse IgG2b Heavy Chain Antibody (A90-109B). *Tertiary:* HRP-conjugated Rabbit anti-Biotin Antibody (A150-109P). *Detection:* Chemiluminescence with an exposure time of 3 seconds.