

Mouse IgG2b Heavy Chain Antibody

Goat Polyclonal Conjugate HRP

Antigen Affinity Purified

Catalog No. A90-109P

Lot No. 38

APPLICATIONS	WB, IHC, ICC, ELISA
SPECIES REACTIVITY	Mouse
AMOUNT	1 ml
CONCENTRATION	1 mg/ml
STORAGE/SHELF LIFE	2 – 8°C / 1 year from date of receipt
PHYSICAL STATE	Liquid
BUFFER	Phosphate Buffered Saline (PBS) containing 0.2% BSA and 0.05% Pro-Clean 400
ISOTYPE	IgG
ORIGIN	USA
PRODUCTION PROCEDURES	Antiserum was solid phase adsorbed to ensure subclass specificity. The antibody was isolated by affinity chromatography using antigen coupled to agarose beads and conjugated to horseradish peroxidase (HRP).

Prior to conjugation, immunoglobulin concentration was determined using Beer's Law where 1 mg/mL IgG has an A280 of 1.4. Molar enzyme/antibody protein ratio is 4:1.

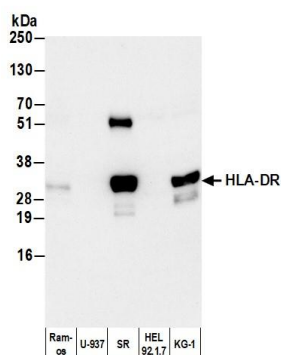
By immunoelectrophoresis and ELISA this antibody reacts specifically with mouse IgG2b. Cross reactivity to mouse IgA, IgM, IgG1, IgG2a, IgG2c, IgG3 and IgE is less than 1%. Some hybridoma clones may express aberrant immunoglobulin-related peptides that are improperly recognized by this antibody.

APPLICATIONS	Centrifuge tube to remove product from lid. Optimal working dilutions should be determined experimentally by the investigator. Prepare working dilution immediately before use.
	Western Blot 1:2,000 – 1:20,000
	Immunohistochemistry 1:200 – 1:2,000
	Immunocytochemistry 1:200 – 1:2,000
	ELISA 1:10,000 – 1:100,000

APPLICATION NOTES Not all listed applications have been specifically tested by our laboratory.

ADDITIONAL INFO <https://www.fortislife.com/p/A90-109P>
Use the link above to view SDS, a current list of citations, and other product specific information.

This document certifies that this product has met all of the quality control standards defined by Bethyl Laboratories, Inc.
Michael Spencer, PhD Date: February 6, 2024



Detection of human HLA-DR by western blot with HRP-conjugated Goat anti-Mouse IgG2b Heavy Chain Antibody. *Samples:* Whole cell lysate (50 µg) from Ramos, U-937, SR (5ug), HEL 92.1.7, and KG-1 cells prepared using NETN lysis buffer. *Antibody:* Mouse anti-HLA-DR Monoclonal Antibody [LN3] (A500-022A) used for WB at 1:1000. *Secondary:* HRP-conjugated Goat anti-Mouse IgG2b Heavy Chain Antibody (A90-109P). *Detection:* Chemiluminescence with an exposure time of 10 seconds.