

Mouse IgG Heavy and Light Chain Antibody

Goat Polyclonal Conjugate DyLight® 488

Antigen Affinity Purified

Catalog No. A90-116D2

Lot No. 15

APPLICATIONS	IHC, ICC, Flow Cyt, IF
SPECIES REACTIVITY	Mouse
AMOUNT	1 ml
CONCENTRATION	0.5 mg/ml
STORAGE/SHELF LIFE	2 – 8°C / 1 year from date of receipt
PHYSICAL STATE	Liquid
BUFFER	Phosphate Buffered Saline (PBS) containing 0.2% BSA and 0.09% Sodium Azide
FLUOROPHORE/PROTEIN	7.9
ISOTYPE	IgG
ORIGIN	USA
PRODUCTION PROCEDURES	The antibody was isolated by affinity chromatography using antigen coupled to agarose beads and conjugated to DyLight® 488.

Immunoglobulin concentration was determined using Beer's Law where 1mg/mL IgG has an A280 of 1.4.

By immunoelectrophoresis and ELISA this antibody reacts specifically with mouse IgG and with light chains common to other mouse immunoglobulins. No antibody was detected against non-immunoglobulin serum proteins. This antibody may cross react with IgG from other species.

APPLICATIONS Centrifuge tube to remove product from lid. Optimal working dilutions should be determined experimentally by the investigator. Prepare working dilution immediately before use.

Immunohistochemistry	1:25– 1:200
Immunocytochemistry	1:25– 1:200
Flow Cytometry	1:50 – 1:200
Immunofluorescence	1:25– 1:200

APPLICATION NOTES Not all listed applications have been specifically tested by our laboratory.

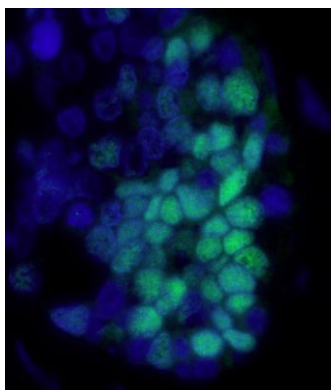
DyLight® 488 is excited at 493 (in PBS) and emits at 518 (in PBS).

DyLight® is a trademark of Thermo Fisher Scientific Inc. and its subsidiaries.

ADDITIONAL INFO <https://www.fortislifecom.com/p/A90-116D2>

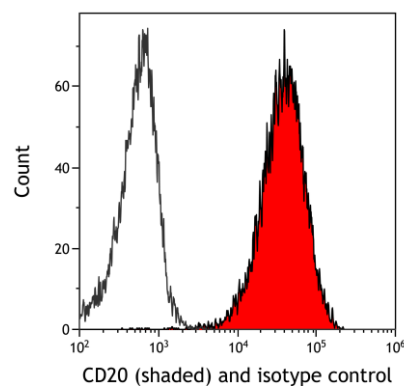
Use the link above to view SDS, a current list of citations, and other product specific information.

This document certifies that this product has met all of the quality control standards defined by Bethyl Laboratories, Inc.
Michael Spencer, PhD Date: January 19, 2024



Detection of human p53 by immunofluorescence.

Sample: FFPE section of human ovarian carcinoma. *Primary Antibody:* mouse anti-p53 (clone DO-1) used at a dilution of 1:100. *Secondary Antibody:* Green-fluorescent goat anti-mouse IgG-heavy and light chain Antibody DyLight® 488 Conjugated (A90-116D2 Lot 7) used at a dilution of 1:50 (10 µg/ml). *Counterstain:* DAPI (blue)



Detection of human CD20 (shaded) in Raji cells by flow cytometry. *Antibody:* Mouse anti-CD20 monoclonal antibody [L26] (A500-017A) or isotype control (unshaded). *Secondary:* DyLight® 488-conjugated goat anti-mouse IgG (A90-116D2).