

Mouse IgG Heavy and Light Chain Antibody

Goat Polyclonal Conjugate DyLight® 650

Antigen Affinity Purified

Catalog No. A90-116D5

Lot No. 12

| | |
|------------------------------|---|
| APPLICATIONS | IHC, ICC, Flow Cyt, IF |
| SPECIES REACTIVITY | Mouse |
| AMOUNT | 1 ml |
| CONCENTRATION | 0.5 mg/ml |
| STORAGE/SHELF LIFE | 2 – 8°C / 1 year from date of receipt |
| PHYSICAL STATE | Liquid |
| BUFFER | Phosphate Buffered Saline (PBS) containing 0.2% BSA and 0.09% Sodium Azide |
| FLUOROPHORE/PROTEIN | 8.4 |
| ISOTYPE | IgG |
| ORIGIN | USA |
| PRODUCTION PROCEDURES | The antibody was isolated by affinity chromatography using antigen coupled to agarose beads and conjugated to DyLight® 650. |

Immunoglobulin concentration was determined using Beer's Law where 1 mg/mL IgG has an A280 of 1.4.

By immunoelectrophoresis and ELISA this antibody reacts specifically with mouse IgG and with light chains common to other mouse immunoglobulins. No antibody was detected against non-immunoglobulin serum proteins. This antibody may cross react with IgG from other species.

APPLICATIONS Centrifuge tube to remove product from lid. Optimal working dilutions should be determined experimentally by the investigator. Prepare working dilution immediately before use.

| | |
|----------------------|--------------|
| Immunohistochemistry | 1:50 – 1:500 |
| Immunocytochemistry | 1:50 – 1:500 |
| Flow Cytometry | 1:50 – 1:200 |
| Immunofluorescence | 1:50 – 1:500 |

APPLICATION NOTES Not all listed applications have been specifically tested by our laboratory.

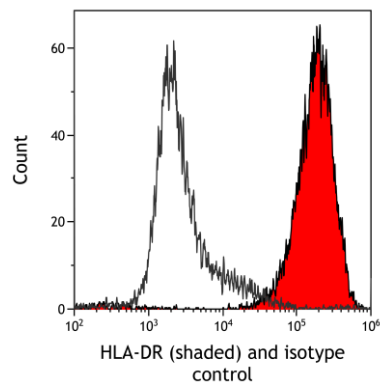
DyLight® 650 is excited at 652 (in PBS) and emits at 672 (in PBS). DyLight® 650 replaces DyLight® 649.

DyLight® is a trademark of Thermo Fisher Scientific Inc. and its subsidiaries.

ADDITIONAL INFO <https://www.fortislife.com/p/A90-116D5>

Use the link above to view SDS, a current list of citations, and other product specific information.

This document certifies that this product has met all of the quality control standards defined by Bethyl Laboratories, Inc.
Michael Spencer, PhD Date: January 22, 2024



Detection of human HLA-DR (shaded) in Daudi cells by flow cytometry. *Antibody:* Mouse anti-HLA-DR monoclonal antibody [LN3] (A500-022A) or isotype control (unshaded). *Secondary:* DyLight® 650-conjugated goat anti-mouse IgG (A90-116D5).