

Mouse IgG Heavy and Light Chain Antibody

Rabbit Polyclonal

Antigen Affinity Purified

Catalog No. A90-117A

Lot No. 221109

APPLICATIONS	WB, IHC, ICC, ELISA
SPECIES REACTIVITY	Mouse
AMOUNT	1 ml
CONCENTRATION	1 mg/ml
STORAGE/SHELF LIFE	2 – 8°C / 2 years from date of receipt
PHYSICAL STATE	Liquid
BUFFER	Phosphate Buffered Saline (PBS) containing 0.09% Sodium Azide
ISOTYPE	IgG
ORIGIN	USA
PRODUCTION PROCEDURES	The antibody was isolated by affinity chromatography using antigen coupled to agarose beads. Immunoglobulin concentration was determined using Beer's Law where 1mg/mL IgG has an A280 of 1.4.

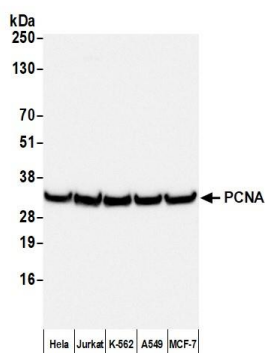
By immunoelectrophoresis and ELISA this antibody reacts specifically with mouse IgG and with light chains common to other mouse immunoglobulins. No antibody was detected against non-immunoglobulin serum proteins. This antibody may cross react with IgG from other species.

APPLICATIONS	Centrifuge tube to remove product from lid. Optimal working dilutions should be determined experimentally by the investigator. Prepare working dilution immediately before use.
	Western Blot 1:1000 – 1:30,000
	Immunohistochemistry 1:200 – 1:2,000
	Immunocytochemistry 1:200 – 1:2,000
	ELISA 1:1000 – 1:30,000; for coating plates 1:100 – 1:500

APPLICATION NOTES Not all listed applications have been specifically tested by our laboratory.

ADDITIONAL INFO <https://www.fortislifesciences.com/p/A90-117A>
Use the link above to view SDS, a current list of citations, and other product specific information.

This document certifies that this product has met all of the quality control standards defined by Bethyl Laboratories, Inc.
Michael Spencer, PhD Date: February 6, 2024



Detection of human PCNA by western blot with Affinity Purified Rabbit anti-Mouse IgG Heavy and Light Chain Antibody. *Samples:* Whole cell lysate (50 μ g) from Hela, Jurkat, K-562, A549, and MCF-7 cells prepared using NETN lysis buffer. *Antibody:* Mouse anti-PCNA Monoclonal Antibody [PC10] (A500-024A) used for WB at 1:1000. *Secondary:* Affinity Purified Rabbit anti-Mouse IgG Heavy and Light Chain Antibody (A90-117A). *Tertiary:* HRP-conjugated Goat anti-Rabbit IgG Heavy and Light Chain Cross-Adsorbed Antibody (A120-201P). *Detection:* Chemiluminescence with an exposure time of 1 second.