

# Mouse Kappa Light Chain Antibody

Goat Polyclonal

Antigen Affinity Purified

Catalog No. A90-119A

Lot No. 221209

---

<b>APPLICATIONS</b>	WB, IHC, ICC, ELISA
<b>SPECIES REACTIVITY</b>	Mouse
<b>AMOUNT</b>	1 ml
<b>CONCENTRATION</b>	1 mg/ml
<b>STORAGE/SHELF LIFE</b>	2 – 8°C / 2 years from date of receipt
<b>PHYSICAL STATE</b>	Liquid
<b>BUFFER</b>	Phosphate Buffered Saline (PBS) containing 0.09% Sodium Azide
<b>ISOTYPE</b>	IgG
<b>ORIGIN</b>	USA
<b>PRODUCTION PROCEDURES</b>	The antibody was isolated by affinity chromatography using antigen coupled to agarose beads. Immunoglobulin concentration was determined using Beer's Law where 1mg/mL IgG has an A280 of 1.4.

By immunoelectrophoresis and ELISA this antibody reacts specifically with kappa light chain common to all mouse immunoglobulins. Less than 1% cross-reactivity was detected against lambda light chain and non-immunoglobulin serum proteins. This antibody may cross react with kappa from other species. Some hybridoma clones may express aberrant immunoglobulin-related peptides that are improperly recognized by this antibody.

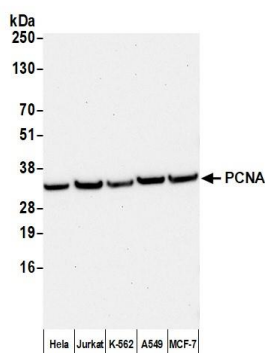
**APPLICATIONS** Centrifuge tube to remove product from lid. Optimal working dilutions should be determined experimentally by the investigator. Prepare working dilution immediately before use.

Western Blot	1:1000 – 1:30,000
Immunohistochemistry	1:200 – 1:2,000
Immunocytochemistry	1:200 – 1:2,000
ELISA	1:1000 – 1:30,000; for coating plates 1:100 – 1:500

**APPLICATION NOTES** Not all listed applications have been specifically tested by our laboratory.

**ADDITIONAL INFO** <https://www.fortislife.com/p/A90-119A>  
Use the link above to view SDS, a current list of citations, and other product specific information.

This document certifies that this product has met all of the quality control standards defined by Bethyl Laboratories, Inc.  
Michael Spencer, PhD Date: February 6, 2024



**Detection of human PCNA by western blot with Affinity Purified Goat anti-Mouse Kappa Light Chain Antibody.**

*Samples:* Whole cell lysate (50 µg) from HeLa, Jurkat, K-562, A549, and MCF-7 cells prepared using NETN lysis buffer. *Antibody:* Mouse anti-PCNA Monoclonal Antibody [PC10] (A500-024A) used for WB at 1:1000. *Secondary:* Affinity Purified Goat anti-Mouse Kappa Light Chain Antibody (A90-119A). *Tertiary:* HRP-conjugated Donkey anti-Goat IgG Heavy and Light Chain Cross-Adsorbed Antibody (A50-201P). *Detection:* Chemiluminescence with an exposure time of 75 seconds.