

# Mouse IgG Heavy and Light Chain Cross-Adsorbed Antibody

F(ab')<sub>2</sub> Goat Polyclonal Conjugate HRP

Antigen Affinity Purified

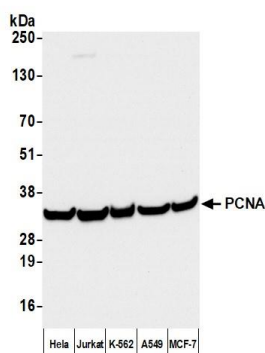
Catalog No. A90-238P

Lot No. 8

---

<b>APPLICATIONS</b>	WB, IHC, ICC, ELISA								
<b>SPECIES REACTIVITY</b>	Mouse. Minimum reactivity to human and rat								
<b>AMOUNT</b>	1 ml								
<b>CONCENTRATION</b>	0.5 mg/ml								
<b>STORAGE/SHELF LIFE</b>	2 – 8°C / 1 year from date of receipt								
<b>PHYSICAL STATE</b>	Liquid								
<b>BUFFER</b>	Phosphate Buffered Saline (PBS) containing 0.2% BSA and 0.05% Pro-Clean 400								
<b>ISOTYPE</b>	IgG								
<b>ORIGIN</b>	USA								
<b>PRODUCTION PROCEDURES</b>	<p>Antiserum was cross adsorbed using human and rat immunosorbents to remove cross reactive antibodies. The antibody to mouse IgG was isolated by affinity chromatography using antigen coupled to agarose beads. F(ab')<sub>2</sub> fragments were generated using a pepsin digestion. Fc fragments and whole IgG molecules have been removed. Fragments were conjugated to horseradish peroxidase (HRP).</p> <p>Immunoglobulin concentration was determined using Beer's Law where 1mg/mL IgG has an A280 of 1.4.</p> <p>By immunoelectrophoresis and ELISA this antibody reacts specifically with mouse IgG and with light chains common to other mouse immunoglobulins. No antibody was detected against non-immunoglobulin serum proteins. Less than 1% cross reactivity to human and rat IgG was detected. This antibody may cross react with IgG from other species.</p>								
<b>APPLICATIONS</b>	<p>Centrifuge tube to remove product from lid. Optimal working dilutions should be determined experimentally by the investigator. Prepare working dilution immediately before use.</p> <table><tr><td>Western Blot</td><td>1:5000 – 1:50,000</td></tr><tr><td>Immunohistochemistry</td><td>1:200 – 1:5000</td></tr><tr><td>Immunocytochemistry</td><td>1:200 – 1:5000</td></tr><tr><td>ELISA</td><td>1:10,000 – 1:50,000</td></tr></table>	Western Blot	1:5000 – 1:50,000	Immunohistochemistry	1:200 – 1:5000	Immunocytochemistry	1:200 – 1:5000	ELISA	1:10,000 – 1:50,000
Western Blot	1:5000 – 1:50,000								
Immunohistochemistry	1:200 – 1:5000								
Immunocytochemistry	1:200 – 1:5000								
ELISA	1:10,000 – 1:50,000								
<b>APPLICATION NOTES</b>	Not all listed applications have been specifically tested by our laboratory.								
<b>ADDITIONAL INFO</b>	<p><a href="https://www.fortislife.com/p/A90-238P">https://www.fortislife.com/p/A90-238P</a></p> <p>Use the link above to view SDS, a current list of citations, and other product specific information.</p>								

This document certifies that this product has met all of the quality control standards defined by Bethyl Laboratories, Inc.  
Michael Spencer, PhD Date: February 6, 2024



**Detection of human PCNA by western blot with HRP-conjugated F(ab')<sub>2</sub> Goat anti-Mouse IgG Heavy and Light Chain Cross-Adsorbed Antibody.** *Samples:* Whole cell lysate (50 µg) from HeLa, Jurkat, K-562, A549, and MCF-7 cells prepared using NETN lysis buffer. *Antibody:* Mouse anti-PCNA Monoclonal Antibody [PC10] (A500-024A) used for WB at 1:1000. *Secondary:* HRP-conjugated F(ab')<sub>2</sub> Goat anti-Mouse IgG Heavy and Light Chain Cross-Adsorbed Antibody (A90-238P). *Detection:* Chemiluminescence with an exposure time of 3 seconds.