

# Mouse IgG–Fc Fragment Cross–Adsorbed Antibody

F(ab')<sub>2</sub> Goat Polyclonal  
Antigen Affinity Purified  
Catalog No. A90–239A  
Lot No. 2

---

<b>APPLICATIONS</b>	WB, IHC, ICC, ELISA
<b>SPECIES REACTIVITY</b>	Mouse. Minimum reactivity to human and rat
<b>AMOUNT</b>	1 ml
<b>CONCENTRATION</b>	0.5 mg/ml
<b>STORAGE/SHELF LIFE</b>	2 – 8°C / 1 year from date of receipt
<b>PHYSICAL STATE</b>	Liquid
<b>BUFFER</b>	Phosphate Buffered Saline (PBS) containing 0.09% Sodium Azide
<b>ISOTYPE</b>	IgG
<b>ORIGIN</b>	USA
<b>PRODUCTION PROCEDURES</b>	Antiserum was solid phase adsorbed to ensure class specificity. Antiserum was cross adsorbed using human and rat immunosorbents to remove cross reactive antibodies. The antibody to mouse IgG was isolated by affinity chromatography using antigen coupled to agarose beads. F(ab') <sub>2</sub> fragments were generated using a pepsin digestion. Fc fragments and whole IgG molecules have been removed.

Immunoglobulin concentration was determined using Beer's Law where 1 mg/mL IgG has an A<sub>280</sub> of 1.4.

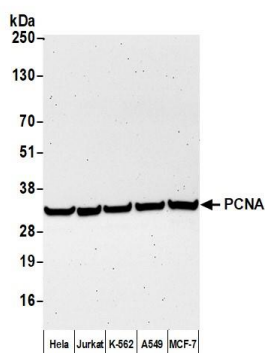
By immunoelectrophoresis and ELISA this antibody reacts specifically with mouse IgG. Cross reactivity with IgA and IgM is negligible. No antibody was detected against non-immunoglobulin serum proteins. Less than 1% cross reactivity to human and rat IgG was detected. This antibody may cross react with IgG from other species.

<b>APPLICATIONS</b>	Centrifuge tube to remove product from lid. Optimal working dilutions should be determined experimentally by the investigator. Prepare working dilution immediately before use.
	Western Blot 1:1000 – 1:20,000
	Immunohistochemistry 1:200 – 1:2,000
	Immunocytochemistry 1:200 – 1:2,000
	ELISA 1:1000 – 1:20,000; for coating plates 1:50 – 1:250

**APPLICATION NOTES** Not all listed applications have been specifically tested by our laboratory.

**ADDITIONAL INFO** <https://www.fortislif.com/p/A90-239A>  
Use the link above to view SDS, a current list of citations, and other product specific information.

This document certifies that this product has met all of the quality control standards defined by Bethyl Laboratories, Inc.  
Michael Spencer, PhD Date: February 6, 2024



**Detection of human PCNA by western blot with Affinity Purified F(ab')<sub>2</sub> Goat anti-Mouse IgG-Fc Fragment Cross-Adsorbed Antibody.** *Samples:* Whole cell lysate (50 µg) from HeLa, Jurkat, K-562, A549, and MCF-7 cells prepared using NETN lysis buffer. *Antibody:* Mouse anti-PCNA Monoclonal Antibody [PC10] (A500-024A) used for WB at 1:1000. *Secondary:* Affinity Purified F(ab')<sub>2</sub> Goat anti-Mouse IgG-Fc Fragment Cross-Adsorbed Antibody (A90-239A). *Tertiary:* HRP-conjugated Donkey anti-Goat IgG Heavy and Light Chain Cross-Adsorbed Antibody (A50-201P). *Detection:* Chemiluminescence with an exposure time of 75 seconds.