

# Mouse IgG Heavy and Light Chain Cross-Adsorbed Antibody

Donkey Polyclonal

Antigen Affinity Purified

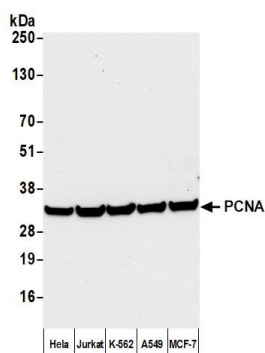
Catalog No. A90-337A

Lot No. 1

---

<b>APPLICATIONS</b>	WB, IHC, ICC, ELISA								
<b>SPECIES REACTIVITY</b>	Mouse. Minimum reactivity to bovine, chicken, goat, human, rabbit, rat and sheep								
<b>AMOUNT</b>	1 ml								
<b>CONCENTRATION</b>	0.5 mg/ml								
<b>STORAGE/SHELF LIFE</b>	2 – 8°C / 1 year from date of receipt								
<b>PHYSICAL STATE</b>	Liquid								
<b>BUFFER</b>	Phosphate Buffered Saline (PBS) containing 0.09% Sodium Azide								
<b>ISOTYPE</b>	IgG								
<b>ORIGIN</b>	USA								
<b>PRODUCTION PROCEDURES</b>	<p>Antiserum was cross adsorbed using bovine, chicken, goat, human, rabbit, rat and sheep immunosorbents to remove cross reactive antibodies. The antibody to mouse IgG was isolated by affinity chromatography using antigen coupled to agarose beads.</p> <p>Immunoglobulin concentration was determined using Beer's Law where 1mg/mL IgG has an A280 of 1.4.</p> <p>By immunoelectrophoresis and ELISA this antibody reacts specifically with mouse IgG and with light chains common to other mouse immunoglobulins. No antibody was detected against non-immunoglobulin serum proteins. Less than 2% cross reactivity to bovine, chicken, goat, human, rabbit, rat and sheep IgG was detected. This antibody may cross react with IgG from other species.</p>								
<b>APPLICATIONS</b>	<p>Centrifuge tube to remove product from lid. Optimal working dilutions should be determined experimentally by the investigator. Prepare working dilution immediately before use.</p> <table><tr><td>Western Blot</td><td>1:1000 – 1:20,000</td></tr><tr><td>Immunohistochemistry</td><td>1:200 – 1:2,000</td></tr><tr><td>Immunocytochemistry</td><td>1:200 – 1:2,000</td></tr><tr><td>ELISA</td><td>1:1000 – 1:20,000; for coating plates 1:50 – 1:250</td></tr></table>	Western Blot	1:1000 – 1:20,000	Immunohistochemistry	1:200 – 1:2,000	Immunocytochemistry	1:200 – 1:2,000	ELISA	1:1000 – 1:20,000; for coating plates 1:50 – 1:250
Western Blot	1:1000 – 1:20,000								
Immunohistochemistry	1:200 – 1:2,000								
Immunocytochemistry	1:200 – 1:2,000								
ELISA	1:1000 – 1:20,000; for coating plates 1:50 – 1:250								
<b>APPLICATION NOTES</b>	Not all listed applications have been specifically tested by our laboratory.								
<b>ADDITIONAL INFO</b>	<p><a href="https://www.fortislife.com/p/A90-337A">https://www.fortislife.com/p/A90-337A</a></p> <p>Use the link above to view SDS, a current list of citations, and other product specific information.</p>								

This document certifies that this product has met all of the quality control standards defined by Bethyl Laboratories, Inc.  
Michael Spencer, PhD Date: February 6, 2024



**Detection of human PCNA by western blot with Affinity Purified Donkey anti-Mouse IgG Heavy and Light Chain Cross-Adsorbed Antibody.** *Samples:* Whole cell lysate (50  $\mu$ g) from Hela, Jurkat, K-562, A549, and MCF-7 cells prepared using NETN lysis buffer. *Antibody:* Mouse anti-PCNA Monoclonal Antibody [PC10] (A500-024A) used for WB at 1:1000. *Secondary:* Affinity Purified Donkey anti-Mouse IgG Heavy and Light Chain Cross-Adsorbed Antibody (A90-337A). *Tertiary:* HRP-conjugated Goat anti-Donkey IgG Heavy and Light Chain Antibody (A140-128P). *Detection:* Chemiluminescence with an exposure time of 10 seconds.