

# Mouse IgG Heavy and Light Chain Cross-Adsorbed

Donkey Polyclonal

Conjugate DyLight® 488

Antigen Affinity Purified

Catalog No. A90-337D2

Lot No. A90-337D2-14

---

|                              |   |
|------------------------------|---|
| <b>APPLICATIONS</b>          | WB, IHC, ICC, F, IF   |
| <b>SPECIES REACTIVITY</b>    | . Minimum reactivity to bovine, chicken, goat, human, rabbit, rat and sheep   |
| <b>AMOUNT</b>                | 1 ml  |
| <b>CONCENTRATION</b>         | 0.5 mg/ml   |
| <b>STORAGE/SHELF LIFE</b>    | 2 – 8° C / 1 year from date of receipt  |
| <b>PHYSICAL STATE</b>        | Liquid  |
| <b>BUFFER</b>                | Phosphate Buffered Saline (PBS) containing 0.2% BSA and 0.09% Sodium Azide  |
| <b>FLUOROPHORE/PROTEIN</b>   | 7.6   |
| <b>ISOTYPE</b>               | IgG   |
| <b>ORIGIN</b>                | USA   |
| <b>PRODUCTION PROCEDURES</b> | Antiserum was cross adsorbed using bovine, chicken, goat, human, rabbit, rat and sheep immunosorbents to remove cross reactive antibodies. The antibody to mouse IgG was isolated by affinity chromatography using antigen coupled to agarose beads and conjugated to DyLight® 488. |

Antibody concentration was determined by extinction coefficient: absorbance at 280 nm of 1.4 equals 1.0 mg of IgG.

By immunoelectrophoresis and ELISA this antibody reacts specifically with mouse IgG and with light chains common to other mouse immunoglobulins. No antibody was detected against non-immunoglobulin serum proteins. Less than 2% cross reactivity to bovine, chicken, goat, human, rabbit, rat and sheep IgG was detected. This antibody may cross react with IgG from other species.

**APPLICATIONS** Centrifuge tube to remove product from lid. Optimal working dilutions should be determined experimentally by the investigator. Prepare working dilution immediately before use.

Western Blot 1:1,000 – 1:20,000. 5% non-fat dry milk in PBST or TBST is recommended for blocking and incubation of antibodies. BSA is not recommended.

Immunohistochemistry 1:40 – 1:400

Immunocytochemistry 1:40 – 1:500

Flow Cytometry 1:50 – 1:200

Immunofluorescence 1:40 – 1:500

**APPLICATION NOTES** Not all listed applications have been specifically tested by our laboratory.

DyLight® 488 is excited at 493 (in PBS) and emits at 518 (in PBS).

DyLight® is a trademark of Thermo Fisher Scientific Inc. and its subsidiaries.

**ADDITIONAL INFO** <https://www.bethyl.com/product/A90-337D2>

Use the link above to view SDS, a current list of citations, and other product specific information.

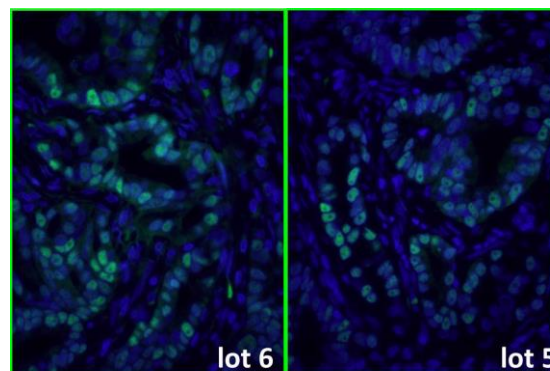
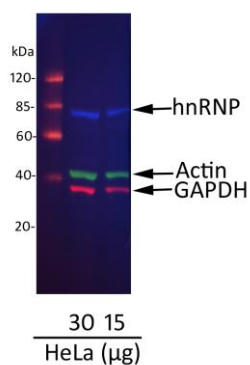
---

~~This document certifies that this product has met all of the quality control standards defined by Bethyl Laboratories, Inc.~~

Phone: 800.338.9579 • Fax: 866.597.6105 • Web: [www.bethyl.com](http://www.bethyl.com)  
Orders: [orders@fortislife.com](mailto:orders@fortislife.com) • Support: [technical@fortislife.com](mailto:technical@fortislife.com)

Michael Spencer, PhD

Date: September 13, 2021



**Detection of hnRNP, Actin, and GAPDH in HeLa Whole Cell Lysate.** *Primary Antibodies:* cocktail of mouse anti-hnRNP A500-011A (A500-011A-1), rabbit anti-actin A300-491A (A300-491A-5), and goat anti-GAPDH A303-878A (A303-878A-1) at 1 µg/ml each. *Secondary Antibodies:* cocktail of Dylight® 488-conjugated donkey anti-mouse A90-337D2 (A90-337D2-5) (blue), Dylight® 680-conjugated donkey anti-rabbit A120-208D6 (A120-208D6-1) (green), and Dylight® 800-conjugated donkey anti-goat A50-201D8 (A50-201D8-1) (red) at 0.5 µg/ml each. *Acquisition:* Syngene G:Box, 34 seconds (blue), 20 seconds (green), and 50 seconds (red).

**Detection of human p53 by immunofluorescence.** *Sample:* FFPE section of human ovarian carcinoma. *Primary Antibody:* mouse anti-p53 (clone DO-1) used at a dilution of 1:100. *Secondary Antibody:* Green-fluorescent donkey anti-mouse IgG-heavy and light chain cross-adsorbed Antibody DyLight® 488 Conjugated (A90-337D2 Lot 6) used at a dilution of 1:50 (10 µg/ml). *Counterstain:* DAPI (blue)