

# Mouse IgG Heavy and Light Chain Human-Adsorbed Antibody

Goat Polyclonal Conjugate HRP

Antigen Affinity Purified

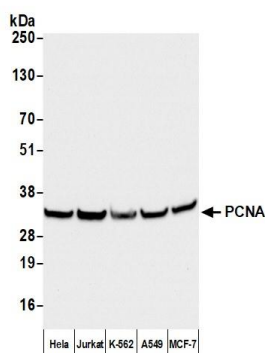
Catalog No. A90-416P

Lot No. 18

---

<b>APPLICATIONS</b>	WB, IHC, ICC, ELISA								
<b>SPECIES REACTIVITY</b>	Mouse. Minimum reactivity to human								
<b>AMOUNT</b>	1 ml								
<b>CONCENTRATION</b>	0.5 mg/ml								
<b>STORAGE/SHELF LIFE</b>	2 – 8°C / 1 year from date of receipt								
<b>PHYSICAL STATE</b>	Liquid								
<b>BUFFER</b>	Phosphate Buffered Saline (PBS) containing 0.2% BSA and 0.05% Pro-Clean 400								
<b>ISOTYPE</b>	IgG								
<b>ORIGIN</b>	USA								
<b>PRODUCTION PROCEDURES</b>	<p>Antiserum was cross adsorbed using a human immunosorbent to remove cross reactive Antibodies. The antibody to mouse IgG was isolated by affinity chromatography using antigen coupled to agarose beads and conjugated to horseradish peroxidase (HRP).</p> <p>Immunoglobulin concentration was determined using Beer's Law where 1mg/mL IgG has an A280 of 1.4.</p> <p>By immunoelectrophoresis and ELISA this antibody reacts specifically with mouse IgG and with light chains common to other mouse immunoglobulins. No antibody was detected against non-immunoglobulin serum proteins. Less than 1% cross reactivity to bovine, chicken, goat, horse, human, pig and rabbit IgG was detected. This antibody may cross react with IgG from other species.</p>								
<b>APPLICATIONS</b>	<p>Centrifuge tube to remove product from lid. Optimal working dilutions should be determined experimentally by the investigator. Prepare working dilution immediately before use.</p> <table><tr><td>Western Blot</td><td>1:5000 – 1:50,000</td></tr><tr><td>Immunohistochemistry</td><td>1:200 – 1:5000</td></tr><tr><td>Immunocytochemistry</td><td>1:200 – 1:5000</td></tr><tr><td>ELISA</td><td>1:10,000 – 1:100,000</td></tr></table>	Western Blot	1:5000 – 1:50,000	Immunohistochemistry	1:200 – 1:5000	Immunocytochemistry	1:200 – 1:5000	ELISA	1:10,000 – 1:100,000
Western Blot	1:5000 – 1:50,000								
Immunohistochemistry	1:200 – 1:5000								
Immunocytochemistry	1:200 – 1:5000								
ELISA	1:10,000 – 1:100,000								
<b>APPLICATION NOTES</b>	Not all listed applications have been specifically tested by our laboratory.								
<b>ADDITIONAL INFO</b>	<p><a href="https://www.fortislife.com/p/A90-416P">https://www.fortislife.com/p/A90-416P</a></p> <p>Use the link above to view SDS, a current list of citations, and other product specific information.</p>								

This document certifies that this product has met all of the quality control standards defined by Bethyl Laboratories, Inc.  
Michael Spencer, PhD Date: February 6, 2024



**Detection of human PCNA by western blot.** *Samples:* Whole cell lysate (50  $\mu$ g) from HeLa, Jurkat, K-562, A549, and MCF-7 cells prepared using NETN lysis buffer. *Antibody:* Mouse anti-PCNA Monoclonal Antibody [PC10] (A500-024A) used for WB at 1:1000. *Secondary:* HRP-conjugated Goat anti-Mouse IgG Heavy and Light Chain Human-Adsorbed Antibody (A90-416P). *Detection:* Chemiluminescence with an exposure time of 3 seconds.