

# Mouse IgG Heavy and Light Chain Cross-Adsorbed Antibody

Goat Polyclonal Conjugate HRP

Antigen Affinity Purified

Catalog No. A90-516P

Lot No. 19

---

<b>APPLICATIONS</b>	WB, IHC, ICC, ELISA
<b>SPECIES REACTIVITY</b>	Mouse. Minimum reactivity to bovine, chicken, horse, human, pig, rabbit and rat
<b>AMOUNT</b>	1 ml
<b>CONCENTRATION</b>	0.5 mg/ml
<b>STORAGE/SHELF LIFE</b>	2 – 8°C / 1 year from date of receipt
<b>PHYSICAL STATE</b>	Liquid
<b>BUFFER</b>	Phosphate Buffered Saline (PBS) containing 0.2% BSA and 0.05% Pro-Clean 400
<b>ISOTYPE</b>	IgG
<b>ORIGIN</b>	USA
<b>PRODUCTION PROCEDURES</b>	Antiserum was cross adsorbed using bovine, chicken, horse, human, pig, rabbit and rat immunosorbents to remove cross reactive antibodies. The antibody to mouse IgG was isolated by affinity chromatography using antigen coupled to agarose beads and conjugated to horseradish peroxidase (HRP).

Immunoglobulin concentration was determined using Beer's Law where 1mg/mL IgG has an A280 of 1.4.

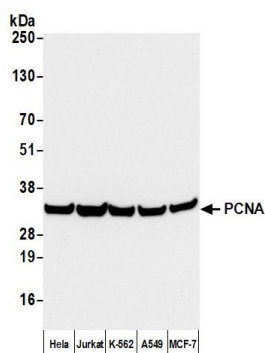
By immunoelectrophoresis and ELISA this antibody reacts specifically with mouse IgG and with light chains common to other mouse immunoglobulins. No antibody was detected against non-immunoglobulin serum proteins. Less than 1% cross reactivity to bovine, chicken, goat, horse, human, pig, rabbit and rat IgG was detected. This antibody may cross react with IgG from other species.

<b>APPLICATIONS</b>	Centrifuge tube to remove product from lid. Optimal working dilutions should be determined experimentally by the investigator. Prepare working dilution immediately before use.
	Western Blot 1:5000 – 1:50,000
	Immunohistochemistry 1:200 – 1:5000
	Immunocytochemistry 1:200 – 1:5000
	ELISA 1:10,000 – 1:100,000

**APPLICATION NOTES** Not all listed applications have been specifically tested by our laboratory.

**ADDITIONAL INFO** <https://www.fortislife.com/p/A90-516P>  
Use the link above to view SDS, a current list of citations, and other product specific information.

This document certifies that this product has met all of the quality control standards defined by Bethyl Laboratories, Inc.  
Michael Spencer, PhD Date: February 6, 2024



**Detection of human PCNA by western blot with HRP-conjugated Goat anti-Mouse IgG Heavy and Light Chain Cross-Adsorbed Antibody.** *Samples:* Whole cell lysate (50 µg) from HeLa, Jurkat, K-562, A549, and MCF-7 cells prepared using NETN lysis buffer. *Antibody:* Mouse anti-PCNA Monoclonal Antibody [PC10] (A500-024A) used for WB at 1:1000. *Secondary:* HRP-conjugated Goat anti-Mouse IgG Heavy and Light Chain Cross-Adsorbed Antibody (A90-516P). *Detection:* Chemiluminescence with an exposure time of 3 seconds.