

Estrogen Receptor Alpha IHC Antibody

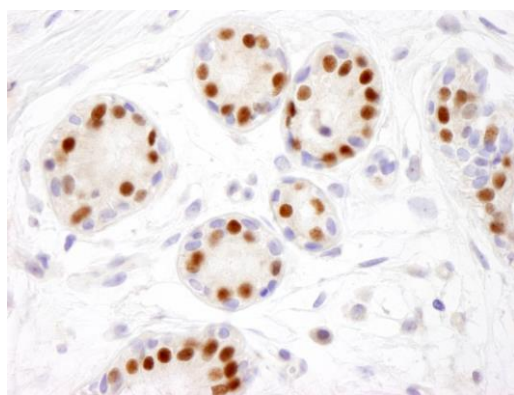
Rabbit Polyclonal

Antigen Affinity Purified Protein ID P03372
Catalog No. IHC-00006 GeneID 2099
Lot No. IHC-00006-1

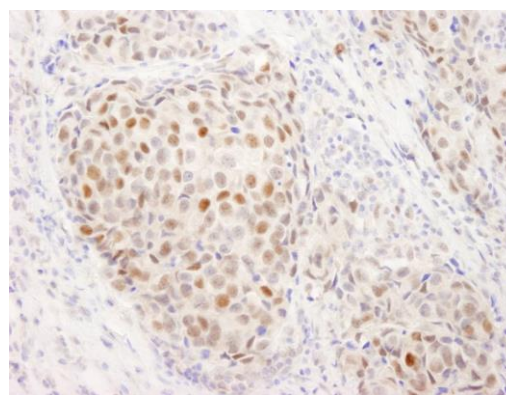


APPLICATIONS	IHC, IHC-IF
SPECIES REACTIVITY	Human
PRESUMED REACTIVITY	Based on 100% sequence identity, this antibody is predicted to react with Orangutan, Chimpanzee, Northern white-cheeked gibbon, Bornean orangutan, Pygmy chimpanzee, Common gibbon and Primates
AMOUNT	100 µl
CONCENTRATION	250 µg/ml
STORAGE/SHELF LIFE	2 - 8° C / 1 year from date of receipt
PHYSICAL STATE	Liquid
BUFFER	Tris-buffered Saline containing 0.1% BSA and 0.09% Sodium Azide
ISOTYPE	IgG
ORIGIN	USA
PRODUCTION PROCEDURES	Antibody was affinity purified using an epitope specific to Estrogen Receptor Alpha immobilized on solid support. The epitope recognized by IHC-00006 maps to a region between residue 550 and the C-terminus (residue 595) of human Estrogen Receptor Alpha using the numbering given in SwissProt entry P03372 (GeneID 2099).
APPLICATIONS	Centrifuge tube to remove product from lid. Optimal working dilutions should be determined experimentally by the investigator. Prepare working dilution immediately before use. Immunohistochemistry 1:100 – 1:500 Immunofluorescence 1:50 – 1:500 (IHC)
APPLICATION NOTES	Epitope exposure is recommended. Epitope exposure with Tris-EDTA pH 9.0 buffer will enhance staining. Likely to work with frozen sections. In some cases, the antibody may be diluted further than indicated.
IHC HUMAN CONTROLS	Breast Carcinoma
ADDITIONAL INFO	https://www.bethyl.com/product/IHC-00006 Use the link above to view SDS, a current list of citations, and other product specific information.

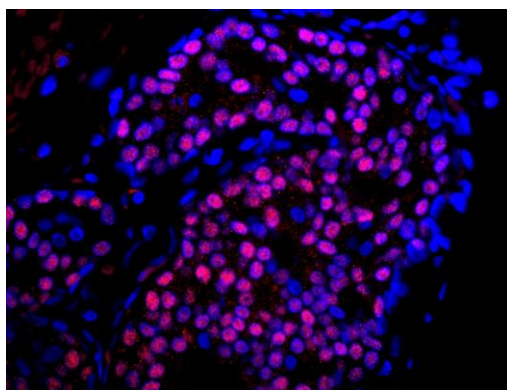
This document certifies that this product has met all of the quality control standards defined by Bethyl Laboratories, Inc.
Eric McIntush, PhD | Chief Scientific Officer Date: June 21, 2019



Detection of human Estrogen Receptor alpha by immunohistochemistry. *Sample:* FFPE section of human breast. *Antibody:* Affinity purified rabbit anti-ER alpha (Cat. No. IHC-00006) used at a dilution of 1:100. *Detection:* DAB



Detection of human Estrogen Receptor alpha by immunohistochemistry. *Sample:* FFPE section of human breast adenocarcinoma. *Antibody:* Affinity purified rabbit anti-ER alpha (Cat. No. IHC-00006) used at a dilution of 1:250. *Detection:* DAB



Detection of human Estrogen Receptor alpha by immunohistochemistry. *Sample:* FFPE section of human breast adenocarcinoma. *Antibody:* Affinity purified rabbit anti-ER alpha (Cat. No. IHC-00006) used at a dilution of 1:100. *Detection:* Red-fluorescent goat anti-rabbit IgG highly cross-adsorbed Antibody