

G6PD IHC Antibody

Rabbit Polyclonal

Antigen Affinity Purified

Protein ID NP_000393.2

Catalog No. IHC-00007

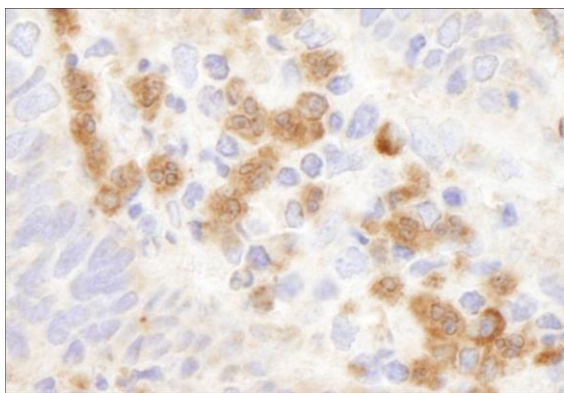
GeneID 2539

Lot No. IHC-00007-1

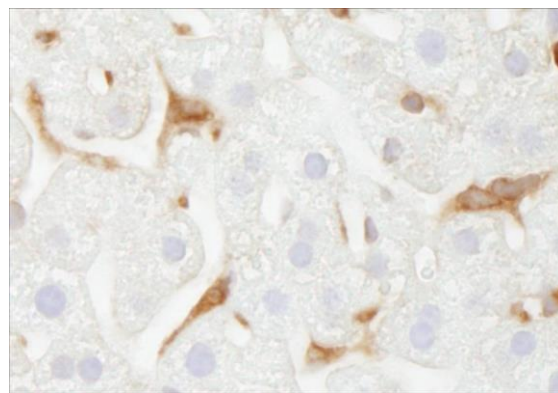


APPLICATIONS	IHC
SPECIES REACTIVITY	Human, Mouse
PRESUMED REACTIVITY	Based on 100% sequence identity, this antibody is predicted to react with Monkey, Gorilla, Chimpanzee, Northern white-cheeked gibbon, Olive baboon and Crab-eating macaque
AMOUNT	100 µl
CONCENTRATION	250 µg/ml
STORAGE/SHELF LIFE	2 – 8° C / 1 year from date of receipt
PHYSICAL STATE	Liquid
BUFFER	Tris-buffered Saline containing 0.1% BSA and 0.09% Sodium Azide
ISOTYPE	IgG
ORIGIN	USA
PRODUCTION PROCEDURES	Antibody was affinity purified using an epitope specific to G6PD immobilized on solid support. The epitope recognized by IHC-00007 maps to a region between residue 50 and 100 of human Glucose-6-Phosphate Dehydrogenase using the numbering given in entry NP_000393.2 (GeneID 2539).
APPLICATIONS	Centrifuge tube to remove product from lid. Optimal working dilutions should be determined experimentally by the investigator. Prepare working dilution immediately before use. Immunohistochemistry 1:100 – 1:500
APPLICATION NOTES	Epitope exposure is recommended. Epitope exposure with citrate or Tris-EDTA pH 9.0 buffer will enhance staining. Likely to work with frozen sections. In some cases, the antibody may be diluted further than indicated.
IHC HUMAN CONTROLS	Spleen, Stomach Adenocarcinoma
IHC MOUSE CONTROLS	Liver, Lung
ADDITIONAL INFO	https://www.bethyl.com/product/IHC-00007 Use the link above to view SDS, a current list of citations, and other product specific information.

This document certifies that this product has met all of the quality control standards defined by Bethyl Laboratories, Inc.
Eric McIntush, PhD | Chief Scientific Officer Date: June 21, 2019



Detection of human G6PD by immunohistochemistry.
Samples: FFPE section of human stomach adenocarcinoma.
Antibody: Affinity purified rabbit anti-G6PD (Cat. No. IHC-00007) used at a dilution of 1:500. *Detection:* DAB



Detection of mouse G6PD by immunohistochemistry.
Samples: FFPE section of mouse liver. *Antibody:* Affinity purified rabbit anti-G6PD (Cat. No. IHC-00007) used at a dilution of 1:250. *Detection:* DAB