

PBEF IHC Antibody

Rabbit Polyclonal

Antigen Affinity Purified

Protein ID P43490

Catalog No. IHC-00011

GeneID 10135

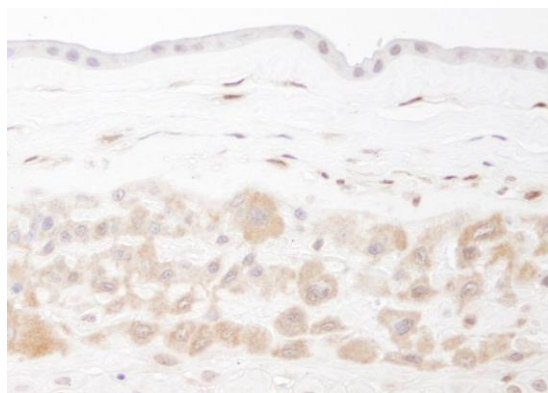
Lot No. IHC-00011-1



APPLICATIONS	IHC
SPECIES REACTIVITY	Human
PRESUMED REACTIVITY	Based on 100% sequence identity, this antibody is predicted to react with Mouse, Rat, Zebrafish, X. laevis, X. tropicalis, Chicken, Turkey, Bovine, Dog, Horse, Rabbit, Guinea pig_10141, Pig and Panda
AMOUNT	100 µl
CONCENTRATION	250 µg/ml
STORAGE/SHELF LIFE	2 - 8° C / 1 year from date of receipt
PHYSICAL STATE	Liquid
BUFFER	Tris-buffered Saline containing 0.1% BSA and 0.09% Sodium Azide
ISOTYPE	IgG
ORIGIN	USA
PRODUCTION PROCEDURES	Antibody was affinity purified using an epitope specific to PBEF immobilized on solid support. The epitope recognized by IHC-00011 maps to a region between residue 400 and 450 of human pre-B-cell colony enhancing factor using the numbering given in SwissProt entry P43490 (GeneID 10135).
APPLICATIONS	Centrifuge tube to remove product from lid. Optimal working dilutions should be determined experimentally by the investigator. Prepare working dilution immediately before use. Immunohistochemistry 1:100 - 1:500
APPLICATION NOTES	Epitope exposure is recommended. Epitope exposure with citrate buffer will enhance staining. Likely to work with frozen sections. In some cases, the antibody may be diluted further than indicated.
IHC HUMAN CONTROLS	Placenta
ADDITIONAL INFO	https://www.bethyl.com/product/IHC-00011 Use the link above to view SDS, a current list of citations, and other product specific information.

This document certifies that this product has met all of the quality control standards defined by Bethyl Laboratories, Inc.
Eric McIntush, PhD | Chief Scientific Officer

Date: June 21, 2019



Detection of human PBEF by immunohistochemistry.

Sample: FFPE section of human fetal membrane. *Antibody:* Affinity purified rabbit anti-PBEF (Cat. No. IHC-00011) used at a dilution of 1:500. *Detection:* DAB