

# PCNA IHC Antibody

Rabbit Polyclonal

Antigen Affinity Purified Protein ID NP\_002583.1

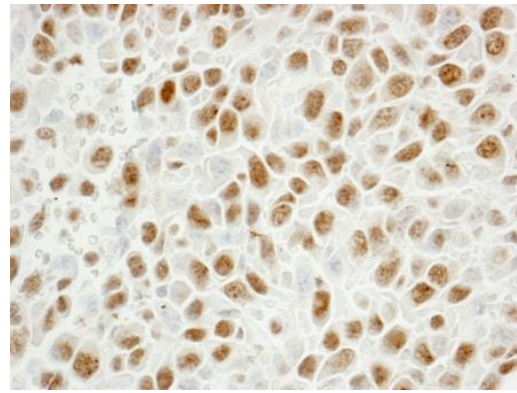
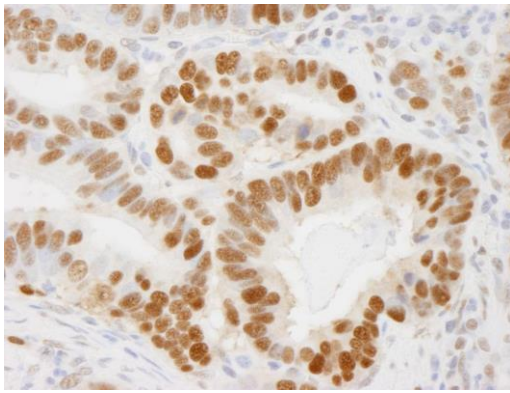
Catalog No. IHC-00012-T GeneID 5111

Lot No. IHC-00012-T-1



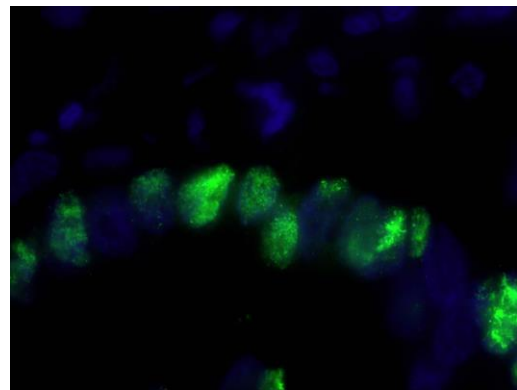
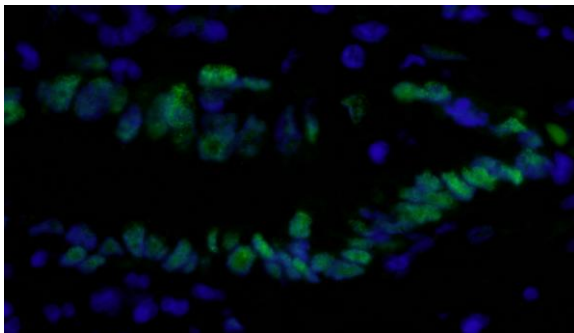
<b>APPLICATIONS</b>	IHC, IHC-IF
<b>SPECIES REACTIVITY</b>	Human, Mouse
<b>AMOUNT</b>	10 µl
<b>CONCENTRATION</b>	100 µg/ml
<b>STORAGE/SHELF LIFE</b>	2 - 8° C / 1 year from date of receipt
<b>PHYSICAL STATE</b>	Liquid
<b>BUFFER</b>	Tris-buffered Saline containing 0.1% BSA and 0.09% Sodium Azide
<b>ISOTYPE</b>	IgG
<b>ORIGIN</b>	USA
<b>PRODUCTION PROCEDURES</b>	Antibody was affinity purified using an epitope specific to PCNA immobilized on solid support.  The epitope recognized by IHC-00012-T maps to a region between residue 225 and the C-terminus (residue 261) of human proliferating cell nuclear antigen using the numbering given in entry NP 002583.1 (GeneID 5111).
<b>APPLICATIONS</b>	Centrifuge tube to remove product from lid. Optimal working dilutions should be determined experimentally by the investigator. Prepare working dilution immediately before use.  Immunohistochemistry 1:100 - 1:500  Immunofluorescence 1:50 - 1:500 (IHC)
<b>APPLICATION NOTES</b>	Epitope exposure is recommended.  Epitope exposure with citrate buffer will enhance staining.  Likely to work with frozen sections.  In some cases, the antibody may be diluted further than indicated.
<b>IHC HUMAN CONTROLS</b>	Breast Carcinoma, Colon Carcinoma, Non-Small Cell Lung Cancer, Ovarian Carcinoma, Pancreatic Islet Cell Tumor, Prostate Carcinoma, Skin Basal Cell Carcinoma, Small Cell Lung Cancer, Spleen, Stomach Adenocarcinoma, Testicular Seminoma
<b>IHC MOUSE CONTROLS</b>	Brain, Large Intestine, Squamous Cell Carcinoma, Teratoma, Testis
<b>ADDITIONAL INFO</b>	<a href="https://www.bethyl.com/product/IHC-00012-T">https://www.bethyl.com/product/IHC-00012-T</a> Use the link above to view SDS, a current list of citations, and other product specific information.

This document certifies that this product has met all of the quality control standards defined by Bethyl Laboratories, Inc.  
Eric McIntush, PhD | Chief Scientific Officer Date: June 21, 2019



**Detection of human PCNA by immunohistochemistry.**  
*Sample:* FFPE section of human stomach adenocarcinoma.  
*Antibody:* Affinity purified rabbit anti-PCNA (Cat. No. IHC-00012-T) used at a dilution of 1:250. *Detection:* DAB

**Detection of mouse PCNA by immunohistochemistry.**  
*Sample:* FFPE section of mouse squamous cell carcinoma.  
*Antibody:* Affinity purified rabbit anti-PCNA (Cat. No. IHC-00012-T) used at a dilution of 1:250. *Detection:* DAB



**Detection of human PCNA by immunohistochemistry.**  
*Sample:* FFPE section of human stomach carcinoma.  
*Antibody:* Affinity purified rabbit anti-PCNA (Cat. No. IHC-00012-T) used at a dilution of 1:100. *Detection:* Green-fluorescent Anti-rabbit IgG FITC conjugated (Cat. No. A120-501F) used at a dilution of 1:100.

**Detection of human PCNA by immunohistochemistry.**  
*Sample:* FFPE section of human stomach carcinoma.  
*Antibody:* Affinity purified rabbit anti-PCNA (Cat. No. IHC-00012-T) used at a dilution of 1:100. *Detection:* Green-fluorescent Anti-rabbit IgG FITC conjugated (Cat. No. A120-501F) used at a dilution of 1:100.