

NSD1 IHC Antibody

Rabbit Polyclonal

Antigen Affinity Purified

Protein ID Q96L73

Catalog No. IHC-00027

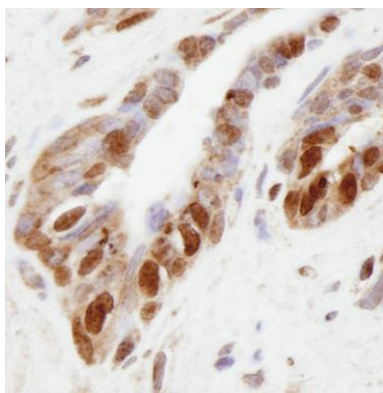
GeneID 64324

Lot No. IHC-00027-2

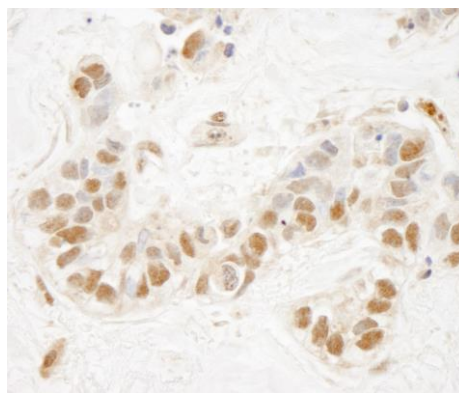


APPLICATIONS	IHC
SPECIES REACTIVITY	Human
AMOUNT	100 µl
CONCENTRATION	250 µg/ml
STORAGE/SHELF LIFE	2 – 8° C / 1 year from date of receipt
PHYSICAL STATE	Liquid
BUFFER	Tris-buffered Saline containing 0.1% BSA and 0.09% Sodium Azide
ISOTYPE	IgG
ORIGIN	USA
PRODUCTION PROCEDURES	Antibody was affinity purified using an epitope specific to NSD1 immobilized on solid support. The epitope recognized by IHC-00027 maps to a region between residue 650 and 700 of human NSD1 using the numbering given in SwissProt entry Q96L73 (GeneID 64324).
APPLICATIONS	Centrifuge tube to remove product from lid. Optimal working dilutions should be determined experimentally by the investigator. Prepare working dilution immediately before use. Immunohistochemistry 1:100 – 1:500
APPLICATION NOTES	Epitope exposure is recommended. Epitope exposure with citrate buffer will enhance staining. Likely to work with frozen sections. In some cases, the antibody may be diluted further than indicated.
IHC HUMAN CONTROLS	Breast Carcinoma, Ovarian Carcinoma, Prostate Carcinoma
ADDITIONAL INFO	https://www.bethyl.com/product/IHC-00027 Use the link above to view SDS, a current list of citations, and other product specific information.

This document certifies that this product has met all of the quality control standards defined by Bethyl Laboratories, Inc.
Eric McIntush, PhD | Chief Scientific Officer Date: June 21, 2019



Detection of human NSD1 by immunohistochemistry.
Sample: FFPE section of human prostate adenocarcinoma.
Antibody: Affinity purified rabbit anti-NSD1 (Cat. No. IHC-00027) used at a dilution of 1:250. *Detection:* DAB



Detection of human NSD1 by immunohistochemistry.
Sample: FFPE section of human breast carcinoma.
Antibody: Affinity purified rabbit anti-NSD1 (Cat. No. IHC-00027) used at a dilution of 1:250. *Detection:* DAB