

# TBLR1 IHC Antibody

Rabbit Polyclonal

Antigen Affinity Purified

Protein ID Q9BZK7

Catalog No. IHC-00031

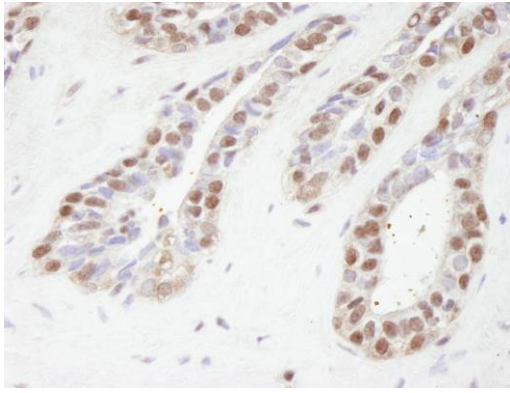
GeneID 79718

Lot No. IHC-00031-1

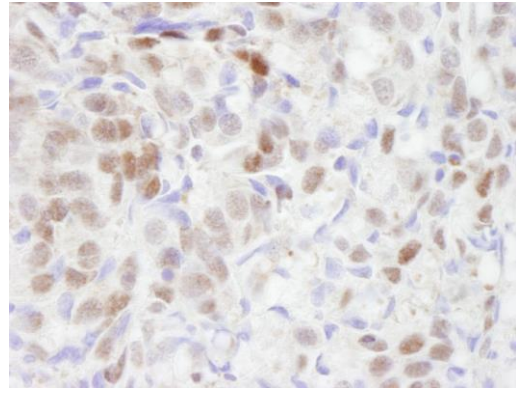


<b>APPLICATIONS</b>	IHC
<b>SPECIES REACTIVITY</b>	Human
<b>PRESUMED REACTIVITY</b>	Based on 100% sequence identity, this antibody is predicted to react with Orangutan, Monkey, Gorilla, Chimpanzee, Northern white-cheeked gibbon and Crab-eating macaque
<b>AMOUNT</b>	100 µl
<b>CONCENTRATION</b>	100 µg/ml
<b>STORAGE/SHELF LIFE</b>	2 – 8° C / 1 year from date of receipt
<b>PHYSICAL STATE</b>	Liquid
<b>BUFFER</b>	Tris-buffered Saline containing 0.1% BSA and 0.09% Sodium Azide
<b>ISOTYPE</b>	IgG
<b>ORIGIN</b>	USA
<b>PRODUCTION PROCEDURES</b>	Antibody was affinity purified using an epitope specific to TBLR1 immobilized on solid support.  The epitope recognized by IHC-00031 maps to a region between residue 100 and 150 of human TBL1-related Protein 1 using the numbering given in SwissProt entry Q9BZK7 (GeneID 79718).
<b>APPLICATIONS</b>	Centrifuge tube to remove product from lid. Optimal working dilutions should be determined experimentally by the investigator. Prepare working dilution immediately before use.  Immunohistochemistry 1:100 – 1:500
<b>APPLICATION NOTES</b>	Epitope exposure is recommended.  Epitope exposure with citrate buffer will enhance staining.  Likely to work with frozen sections.
<b>IHC HUMAN CONTROLS</b>	In some cases, the antibody may be diluted further than indicated. Breast Carcinoma, Colon Carcinoma, Non-Small Cell Lung Cancer, Prostate Carcinoma, Stomach Adenocarcinoma
<b>ADDITIONAL INFO</b>	<a href="https://www.bethyl.com/product/IHC-00031">https://www.bethyl.com/product/IHC-00031</a> Use the link above to view SDS, a current list of citations, and other product specific information.

This document certifies that this product has met all of the quality control standards defined by Bethyl Laboratories, Inc.  
Eric McIntush, PhD | Chief Scientific Officer Date: June 21, 2019



**Detection of human TBLR1 by immunohistochemistry.**  
*Sample:* FFPE section of human prostate adenocarcinoma.  
*Antibody:* Affinity purified rabbit anti-TBLR1 (Cat. No. IHC-00031) used at a dilution of 1:250. *Detection:* DAB



**Detection of human TBLR1 by immunohistochemistry.**  
*Sample:* FFPE section of human breast adenocarcinoma.  
*Antibody:* Affinity purified rabbit anti-TBLR1 (Cat. No. IHC-00031) used at a dilution of 1:250. *Detection:* DAB