

DNA-PKcs IHC Antibody

Rabbit Polyclonal

Antigen Affinity Purified

Protein ID NP_008835.5

Catalog No. IHC-00044

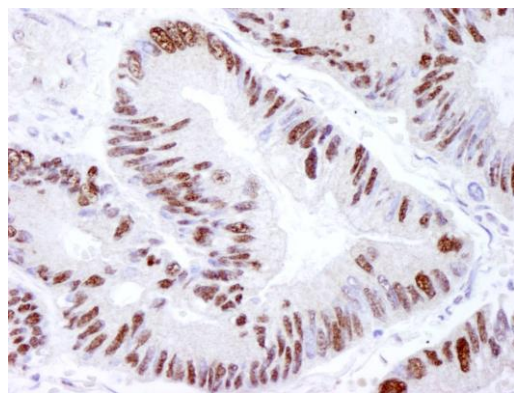
GeneID 5591

Lot No. IHC-00044-1



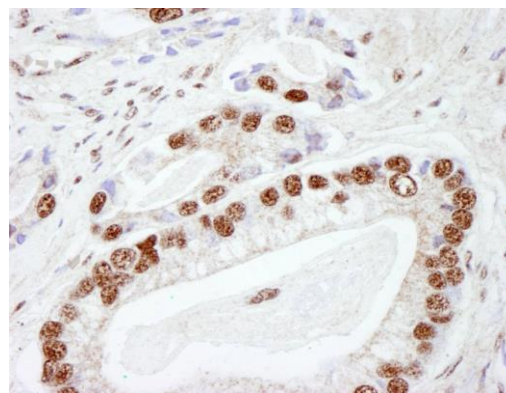
APPLICATIONS	IHC
SPECIES REACTIVITY	Human
PRESUMED REACTIVITY	Based on 100% sequence identity, this antibody is predicted to react with Monkey, Northern white-cheeked gibbon and Crab-eating macaque
AMOUNT	100 µl
CONCENTRATION	250 µg/ml
STORAGE/SHELF LIFE	2 - 8° C / 1 year from date of receipt
PHYSICAL STATE	Liquid
BUFFER	Tris-buffered Saline containing 0.1% BSA and 0.09% Sodium Azide
ISOTYPE	IgG
ORIGIN	USA
PRODUCTION PROCEDURES	Antibody was affinity purified using an epitope specific to DNA-PKcs immobilized on solid support. The epitope recognized by IHC-00044 maps to a region between residue 2100 and 2150 of human DNA-Dependent Protein Kinase, catalytic subunit using the numbering given in entry NP_008835.5 (GeneID 5591).
APPLICATIONS	Centrifuge tube to remove product from lid. Optimal working dilutions should be determined experimentally by the investigator. Prepare working dilution immediately before use. Immunohistochemistry 1:100 - 1:500
APPLICATION NOTES	Epitope exposure is recommended. Epitope exposure with citrate buffer will enhance staining. Likely to work with frozen sections.
IHC HUMAN CONTROLS	In some cases, the antibody may be diluted further than indicated. Breast Carcinoma, Colon Carcinoma, Non-Small Cell Lung Cancer, Small Cell Lung Cancer, Testicular Seminoma
ADDITIONAL INFO	https://www.bethyl.com/product/IHC-00044 Use the link above to view SDS, a current list of citations, and other product specific information.

This document certifies that this product has met all of the quality control standards defined by Bethyl Laboratories, Inc.
Eric McIntush, PhD | Chief Scientific Officer Date: June 21, 2019

**Detection of human DNA-PKcs by immunohistochemistry.**

Sample: FFPE section of human lung adenocarcinoma.

Antibody: Affinity purified rabbit anti-DNA-PKcs (Cat. No. IHC-00044) used at a dilution of 1:250. *Detection:* DAB

**Detection of human DNA-PKcs by immunohistochemistry.**

Sample: FFPE section of prostate adenocarcinoma.

Antibody: Affinity purified rabbit anti-DNA-PKcs (Cat. No. IHC-00044) used at a dilution of 1:250. *Detection:* DAB