

CD31/PECAM-1 IHC Antibody

Rabbit Polyclonal

Antigen Affinity Purified

Protein ID NP_000433.2

Catalog No. IHC-00055-T

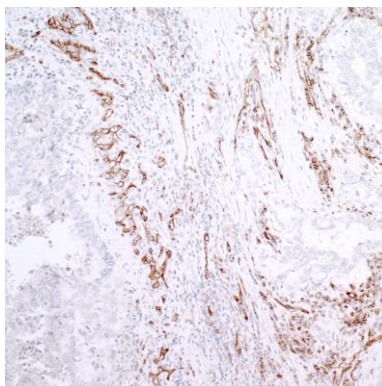
GeneID 5175

Lot No. IHC-00055-T-2



APPLICATIONS	IHC
SPECIES REACTIVITY	Human
AMOUNT	10 µl
CONCENTRATION	100 µg/ml
STORAGE/SHELF LIFE	2 – 8° C / 1 year from date of receipt
PHYSICAL STATE	Liquid
BUFFER	Tris-buffered Saline containing 0.1% BSA and 0.09% Sodium Azide
ISOTYPE	IgG
ORIGIN	USA
PRODUCTION PROCEDURES	<p>Antibody was affinity purified using an epitope specific to CD31/PECAM-1 immobilized on solid support.</p> <p>The epitope recognized by IHC-00055-T maps to a region between residue 700 and the C-terminus (residue 738) of human CD31/PECAM-1 using the numbering given in entry NP_000433.2 (GeneID 5175).</p>
APPLICATIONS	<p>Centrifuge tube to remove product from lid. Optimal working dilutions should be determined experimentally by the investigator. Prepare working dilution immediately before use.</p> <p>Immunohistochemistry 1:100 – 1:500</p>
APPLICATION NOTES	<p>Epitope exposure is recommended.</p> <p>Epitope exposure with citrate buffer will enhance staining.</p> <p>Likely to work with frozen sections.</p>
IHC HUMAN CONTROLS	<p>In some cases, the antibody may be diluted further than indicated.</p> <p>Breast Carcinoma, Colon Carcinoma, Linitis Plastica Stomach Cancer, Non-Small Cell Lung Cancer, Ovarian Carcinoma, Prostate Carcinoma, Small Cell Lung Cancer, Stomach Adenocarcinoma</p>
ADDITIONAL INFO	<p>https://www.bethyl.com/product/IHC-00055-T</p> <p>Use the link above to view SDS, a current list of citations, and other product specific information.</p>

This document certifies that this product has met all of the quality control standards defined by Bethyl Laboratories, Inc.
Brian McWilliams, PhD Date: November 2, 2020



Detection of human CD31/PECAM-1 by immunohistochemistry. *Sample:* FFPE section of human lung adenocarcinoma. *Antibody:* Affinity purified rabbit anti-CD31/PECAM-1 (Cat. No. IHC-00055 Lot 2) used at a dilution of 1:100 with Citrate Epitope Retrieval pH6.0. *Detection:* DAB