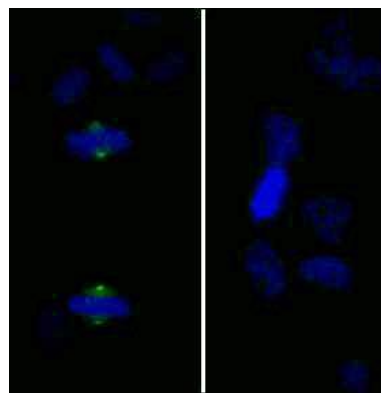


Detection of human Phospho-Aurora A (T288) by immunocytochemistry. *Samples:* NBF-fixed asynchronous HeLa cells. *Antibody:* Affinity purified rabbit anti-Phospho-Aurora A (T288) (Cat. No. IHC-00067) used at a dilution of 1:250. *Detection:* Anti-rabbit IgG-FITC conjugated (Cat. No. A120-101F) used at a dilution of 1:100.



Detection of human Phospho-Aurora A (T288) by immunocytochemistry. *Samples:* NBF-fixed asynchronous HeLa cells. Mock phosphatase treated section (left) or calf intestinal phosphatase-treated section (right) immunostained for Phospho-Aurora A. *Antibody:* Affinity purified rabbit anti-Phospho-Aurora A (T288) (Cat. No. IHC-00067) used at a dilution of 1:250. *Detection:* Anti-rabbit IgG-FITC conjugated (Cat. No. A120-101F) used at a dilution of 1:100.