

TPR IHC Antibody

Rabbit Polyclonal

Antigen Affinity Purified

Protein ID NP_003283.1

Catalog No. IHC-00099

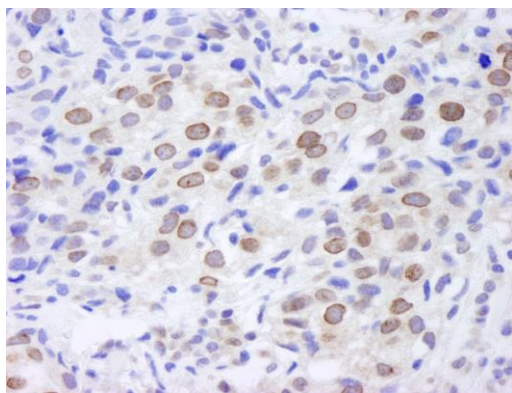
GeneID 7175

Lot No. IHC-00099-1

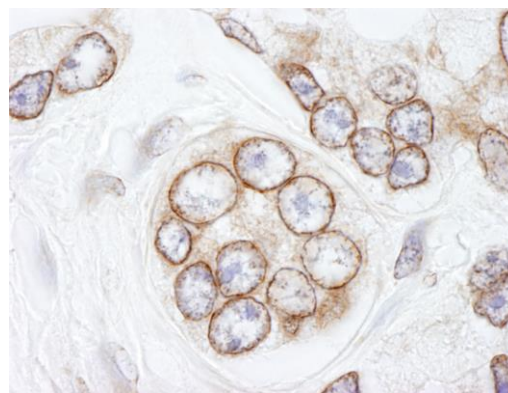


APPLICATIONS	IHC, ICC-IF
SPECIES REACTIVITY	Human, Mouse
PRESUMED REACTIVITY	Based on 100% sequence identity, this antibody is predicted to react with Bovine, Dog, Rabbit, Pig, Panda, Monkey, Gorilla, Chimpanzee, Northern white-cheeked gibbon and Little brown bat
AMOUNT	100 µl
CONCENTRATION	250 µg/ml
STORAGE/SHELF LIFE	2 – 8° C / 1 year from date of receipt
PHYSICAL STATE	Liquid
BUFFER	Tris-buffered Saline containing 0.1% BSA and 0.09% Sodium Azide
ISOTYPE	IgG
ORIGIN	USA
PRODUCTION PROCEDURES	Antibody was affinity purified using an epitope specific to TPR immobilized on solid support. The epitope recognized by IHC-00099 maps to a region between residue 2300 and the C-terminus (residue 2349) of human Translocated Promoter Region Protein using the numbering given in entry NP_003283.1 (GeneID 7175).
APPLICATIONS	Centrifuge tube to remove product from lid. Optimal working dilutions should be determined experimentally by the investigator. Prepare working dilution immediately before use. Immunohistochemistry 1:100 – 1:500 Immunofluorescence 1:100 – 1:500 (ICC)
APPLICATION NOTES	Formalin-Fixed Paraffin-Embedded Tissue 1:100 – 1:500: Epitope exposure is recommended. Epitope exposure with citrate buffer will enhance staining. Formaldehyde-Fixed Cells 1:100 – 1:500: Permeabilization with Triton-X 100 is recommended. Likely to work with frozen sections. In some cases, the antibody may be diluted further than indicated.
IHC HUMAN CONTROLS	Breast Carcinoma, Colon Carcinoma, Hodgkins Lymphoma, Linitis Plastica Stomach Cancer, Ovarian Carcinoma, Prostate Carcinoma, Skin Basal Cell Carcinoma, Skin Squamous Cell Carcinoma, Stomach Adenocarcinoma, Testicular Seminoma
IHC MOUSE CONTROLS	Squamous Cell Carcinoma
ADDITIONAL INFO	https://www.bethyl.com/product/IHC-00099 Use the link above to view SDS, a current list of citations, and other product specific information.

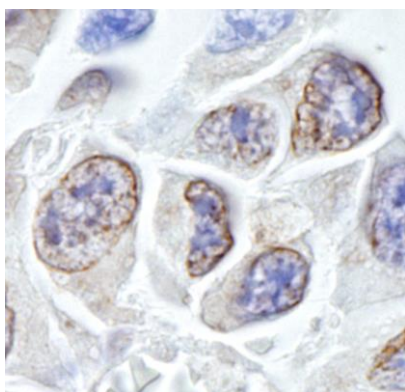
This document certifies that this product has met all of the quality control standards defined by Bethyl Laboratories, Inc.
Eric McIntush, PhD | Chief Scientific Officer Date: June 21, 2019



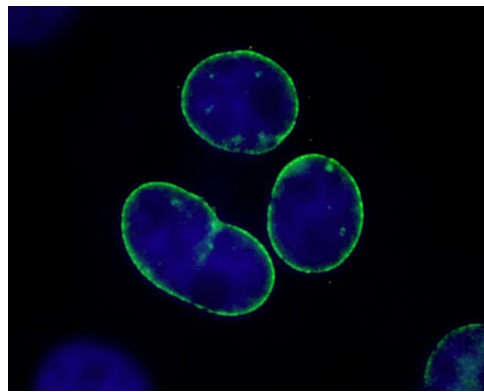
Detection of human TPR by immunohistochemistry.
Sample: FFPE section of human breast carcinoma.
Antibody: Affinity purified rabbit anti-TPR (Cat. No. IHC-00099) used at a dilution of 1:100. *Detection:* DAB staining using anti-rabbit IHC antibody (Cat. No. A120-501P) at a dilution of 1:100.



Detection of human TPR by immunohistochemistry.
Sample: FFPE section of human prostate carcinoma.
Antibody: Affinity purified rabbit anti-TPR (Cat. No. IHC-00099) used at a dilution of 1:250. *Detection:* DAB



Detection of mouse TPR by immunohistochemistry.
Sample: FFPE section of mouse squamous cell carcinoma.
Antibody: Affinity purified rabbit anti-TPR (Cat. No. IHC-00099) used at a dilution of 1:250. *Detection:* DAB



Detection of human TPR by immunocytochemistry.
Sample: NBF-fixed asynchronous HeLa cells. *Antibody:* Affinity purified rabbit anti-TPR (Cat. No. IHC-00099) used at a dilution of 1:250. *Detection:* Green-fluorescent Anti-rabbit IgG FITC conjugated (Cat. No. A120-501F) used at a dilution of 1:100.