

# NUP214 IHC Antibody

Rabbit Polyclonal

Antigen Affinity Purified

Protein ID NP\_005076.3

Catalog No. IHC-00103

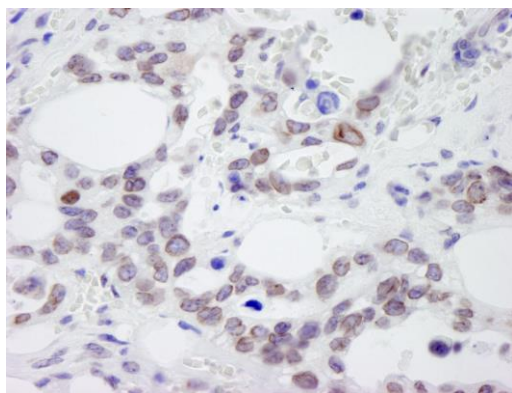
GeneID 8021

Lot No. IHC-00103-1

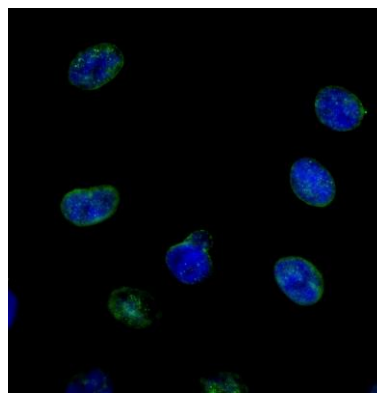


<b>APPLICATIONS</b>	IHC, ICC-IF
<b>SPECIES REACTIVITY</b>	Human
<b>PRESUMED REACTIVITY</b>	Based on 100% sequence identity, this antibody is predicted to react with Orangutan, Monkey, Gorilla and Chimpanzee
<b>AMOUNT</b>	100 µl
<b>CONCENTRATION</b>	500 µg/ml
<b>STORAGE/SHELF LIFE</b>	2 – 8° C / 1 year from date of receipt
<b>PHYSICAL STATE</b>	Liquid
<b>BUFFER</b>	Tris-buffered Saline containing 0.1% BSA and 0.09% Sodium Azide
<b>ISOTYPE</b>	IgG
<b>ORIGIN</b>	USA
<b>PRODUCTION PROCEDURES</b>	Antibody was affinity purified using an epitope specific to NUP214 immobilized on solid support.  The epitope recognized by IHC-00103 maps to a region between residue 1250 and 1300 of human Nucleoporin 214 using the numbering given in entry NP_005076.3 (GeneID 8021).
<b>APPLICATIONS</b>	Centrifuge tube to remove product from lid. Optimal working dilutions should be determined experimentally by the investigator. Prepare working dilution immediately before use.  Immunohistochemistry 1:100 – 1:500  Immunofluorescence 1:100 – 1:500 (ICC)
<b>APPLICATION NOTES</b>	Formalin-Fixed Paraffin-Embedded Tissue 1:100 – 1:500: Epitope exposure is recommended. Epitope exposure with citrate buffer will enhance staining.  Formaldehyde-Fixed Cells 1:100 – 1:500: Permeabilization with Triton-X 100 is recommended.  Likely to work with frozen sections.  In some cases, the antibody may be diluted further than indicated.
<b>IHC HUMAN CONTROLS</b>	Breast Carcinoma, Colon Carcinoma, Linitis Plastica Stomach Cancer, Non-Small Cell Lung Cancer, Ovarian Carcinoma, Skin Basal Cell Carcinoma, Stomach Adenocarcinoma, Testicular Seminoma
<b>ADDITIONAL INFO</b>	<a href="https://www.bethyl.com/product/IHC-00103">https://www.bethyl.com/product/IHC-00103</a> Use the link above to view SDS, a current list of citations, and other product specific information.

This document certifies that this product has met all of the quality control standards defined by Bethyl Laboratories, Inc.  
Eric McIntush, PhD | Chief Scientific Officer Date: June 21, 2019

**Detection of human NUP214 by immunohistochemistry.**

*Sample:* FFPE section of human ovarian carcinoma. *Antibody:* Affinity purified rabbit anti-NUP214 (Cat. No. IHC-00103) used at a dilution of 1:100. *Detection:* DAB staining using anti-rabbit IHC antibody (Cat. No. A120-501P) at a dilution of 1:100.

**Detection of human NUP214 by immunocytochemistry.**

*Sample:* NBF-fixed asynchronous HeLa cells. *Antibody:* Affinity purified rabbit anti-NUP214 (Cat. No. IHC-00103) used at a dilution of 1:250. *Detection:* Anti-rabbit IgG-FITC conjugated (Cat. No. A120-101F) used at a dilution of 1:100.